



# PZB piston motors

An energy efficient and durable air drive unit



# ATLAS COPCO

## PZB PISTON AIR MOTORS

Atlas Copco has been the trusted source for air drive innovation for more than 50 years. We serve a wide variety of customers across the globe, offering sustainable productivity, in an even wider array of applications.

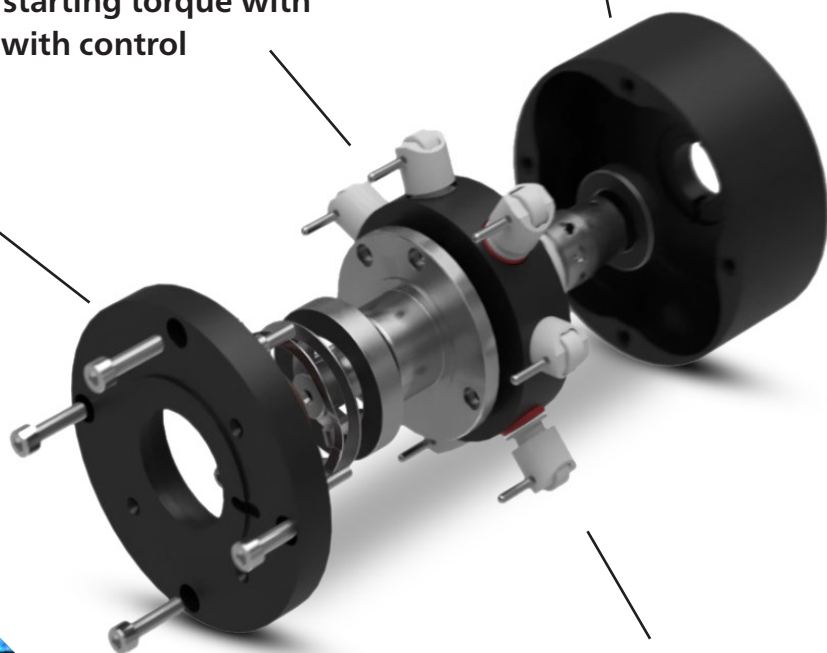
The PZB range of piston air motors is energy efficient and has unique low speed and high starting torque features, adding value in many applications. The compact design and different mount configurations make it easy to install. The PZB motor is ATEX Certified and operates without lubrication, making it ideal for white room and chemical, as well as automation and handling applications.

Strong and compact design existing in standard and stainless-steel body



Centrifugal piston technology allow high starting torque with low speed with control

different flange configurations for easy integration

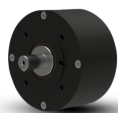


Extended lifetime thanks to Atlas Copco lubrication free piston design

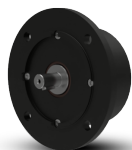


Ex II 2 G Ex h IIC T6 Gb for gas  
Ex II 2 D Ex h IIIC T85°C Db for dust

## STANDARD PZB piston motors



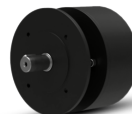
Atlas Copco  
standard flange  
PZB...-L-...-11



IEC Flange PZB...-20



NEMA Flange PZB...-21



Bearing flange  
PZB...-LE...-11



Atlas Copco  
extended flange  
PZB...-L-...-22

Model	Max output		Speed at max output	Torque at max output		Min starting torque		Stall torque		Max allowed speed*	Air consumption at max output		Weight		Ordering No.
	kW	hp	r/min	Nm	lb-ft	Nm	lb-ft	Nm	lb-ft	r/min	l/s	cfm	kg	lb	
PZB09-L-AR500-11	0.09	0.12	379	2.27	1.67	4.5	3.3	4.53	3.34	500	3.0	6.3	1.2	2.2	8411 4090 00
PZB09-L-AR500-20	0.09	0.12	379	2.27	1.67	4.5	3.3	4.53	3.34	500	3.0	6.3	1.4	2.5	8411 4091 18
PZB09-L-AR500-21	0.09	0.12	379	2.27	1.67	4.5	3.3	4.53	3.34	500	3.0	6.3	1.7	3.1	8411 4091 26
PZB09-LE-AR500-11	0.09	0.12	379	2.27	1.67	4.5	3.3	4.53	3.34	500	3.0	6.3	1.6	2.9	8411 4090 34
PZB09-L-AR500-22	0.09	0.12	379	2.27	1.67	4.5	3.3	4.53	3.34	500	3.0	6.3	1.6	2.9	8411 4091 67
PZB15-L-AR500-11	0.12	0.16	297	3.93	2.9	9.0	6.6	7.87	5.80	500	4.3	9.1	1.4	2.5	8411 4150 00
PZB15-L-AR500-20	0.12	0.16	297	3.93	2.9	9.0	6.6	7.87	5.80	500	4.3	9.1	1.6	2.9	8411 4151 18
PZB15-L-AR500-21	0.12	0.16	297	3.93	2.9	9.0	6.6	7.87	5.80	500	4.3	9.1	1.9	3.4	8411 4151 26
PZB15-LE-AR500-11	0.12	0.16	297	3.93	2.9	9.0	6.6	7.87	5.80	500	4.3	9.1	1.8	3.3	8411 4151 34
PZB15-L-AR500-22	0.12	0.16	297	3.93	2.9	9.0	6.6	7.87	5.80	500	4.3	9.1	1.8	3.3	8411 4151 67
PZB21-L-AR300-11	0.21	0.28	242	8.26	6.09	20.0	14.8	16.52	12.18	300	6.0	12.8	3.5	7.71	8411 4210 00
PZB21-L-AR300-20	0.21	0.28	242	8.26	6.09	20.0	14.8	16.52	12.18	300	6.0	12.8	5.5	12.12	8411 4210 18
PZB21-L-AR300-21	0.21	0.28	242	8.26	6.09	20.0	14.8	16.52	12.18	300	6.0	12.8	3.7	8.15	8411 4210 26
PZB21-LE-AR300-11	0.21	0.28	242	8.26	6.09	20.0	14.8	16.52	12.18	300	6.0	12.8	5.4	11.90	8411 4210 34

## STAINLESS STEEL PZB piston motors



PZB09-RL-AR500-11



PZB15-RL-AR500-11



IEC Flange PZB...-20



NEMA Flange PZB...-21

Model	Max output		Speed at max output	Torque at max output		Min starting torque		Stall torque		Max allowed speed*	Air consumption at max output		Weight		Ordering No.
	kW	hp	r/min	Nm	lb-ft	Nm	lb-ft	Nm	lb-ft	r/min	l/s	cfm	kg	lb	
PZB09-RL-AR500-11	0.09	0.12	379	2.27	1.67	4.5	3.3	4.53	3.34	500	3.0	6.3	1.2	2.64	8411 4090 91
PZB09-RL-AR500-20	0.09	0.12	379	2.27	1.67	4.5	3.3	4.53	3.34	500	3.0	6.3	1.4	2.5	8411 4091 11
PZB09-RL-AR500-21	0.09	0.12	379	2.27	1.67	4.5	3.3	4.53	3.34	500	3.0	6.3	1.7	3.1	8411 4091 29
PZB15-RL-AR500-11	0.12	0.16	297	3.93	2.9	9.0	6.6	7.87	5.80	500	4.3	9.1	1.4	3.08	8411 4150 91
PZB15-RL-AR500-20	0.12	0.16	297	3.93	2.9	9.0	6.6	7.87	5.80	500	4.3	9.1	1.6	2.9	8411 4151 11
PZB15-RL-AR500-21	0.12	0.16	297	3.93	2.9	9.0	6.6	7.87	5.80	500	4.3	9.1	1.9	3.4	8411 4151 29

\* Motor without restrictor plates in the air in- and outlet, the motors should not be run above max allowed speed.



## Contributing to the SUSTAINABILITY - TOGETHER

Taking action for the planet has never been easier!

Atlas Copco PZB piston pneumatic motors offer a remarkable energy-saving advantage, consuming 25% to 40% less energy compared to vane pneumatic motors.

With improved energy efficiency and an extended lifespan and easiness of installation, choosing a PZB piston motor will contribute to the effective reduction of CO<sub>2</sub> emissions while optimizing your operational processes.

Look around and find the best drive solution for your application with us!



Vane



Piston



Turbine



Electric

Scan the codes to discover more about our exceptional products on our webpage!



PZB motor webpage



Motor Online Selection Tool



Motor Applications



Discover more about our team

**Atlas Copco**

**Atlas Copco AB**

(publ) SE-105 23 Stockholm, Sweden

Phone: +46 8 743 80 00

Reg. no: 556014-2720

atlascopco.com