

ATB CAST IRON PISTON COMPRESSOR



ATB Series Cast Iron
AT B5-150 - 5.5 hp / 4 kW Piston Compressor

Sustainable Productivity

Atlas Copco

Quality you can count on

Small businesses have big responsibilities. The Atlas Copco ATB delivers the quality compressed air you need to get the job done. All day, every day. These cast iron piston compressors are built to your needs and will give you a lifetime of Atlas Copco performance and reliability.

1

Efficient

- High-efficiency, MEPS-compliant IP55 motor
- Stainless steel valves and valve plates minimize energy losses.



2

Reliable

- Condor pressure switch installed on all models.
- Slow-turning, super strong cast iron pumps with 2-year warranty.
- Shaft, connecting rod and cylinders are also made of cast iron.
- Cylinder heads with deep cooling fins, cast iron flywheel and copper outlet pipe ensure strong cooling.

4

Easy to move

- Comes with built-in forklift feet.

3

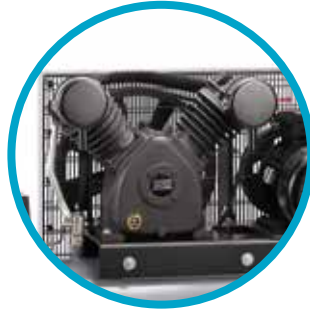
Easy to use

- Large sight glass on the pump makes it easy to check the oil level.

BUILT TO WORK FOR YOU



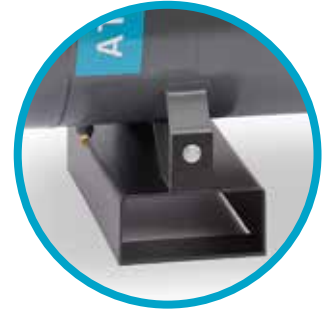
- ✓ **Condor pressure switch**
Installed on all models to maximize reliability and performance



- ✓ **Metal belt guard**
Protects both operator and compressor belts.



- ✓ **Efficient motors**
High-efficiency, MEPS-compliant IP55 motor.



- ✓ **Easy to move into place**
Comes with built-in forklift feet.

TECHNICAL SPECIFICATIONS

AT B5-150 - 5.5 hp/4 kW Piston

Part Number:	1129740155
Model Name:	AT B5-150
Power:	5.5 hp / 4 kW (400/3/50)
Starter / IP:	DOL / 55
MEPS:	MEPS/GEMS
Max Pressure:	10 bar / 145 psi
Tank Volume:	150 l
Pump Displacement:	718 l/m / 25.4 cfm
Free Air Delivery:	508 l/m / 17.9 cfm
Current Draw:	8.8 amp
Noise:	75 dB
Cylinders/Stages	2/1
Motor Speed:	850 RPM
Oil:	1 l
Dimensions (L x W x H)/weight (machine):	1360 x 440 x 1040 / 171 kg
Dimensions (L x W x H)/weight (package):	1395 x 475 x 1235 / 190 kg

SERVICE KITS AND SPARE PARTS

The Atlas Copco ATB is supported by a full range of service kits that come complete with all necessary parts and oils:

- Genuine parts guarantee extended compressor service life and reliability.
- Cost-effective service solution based on optimum service intervals.
- Save time and administration – no need to determine individual service parts
- Atlas Copco's Piston Oil was specifically developed to offer sustainable lubricant properties even under demanding operating conditions.

DIMENSIONS



Atlas Copco