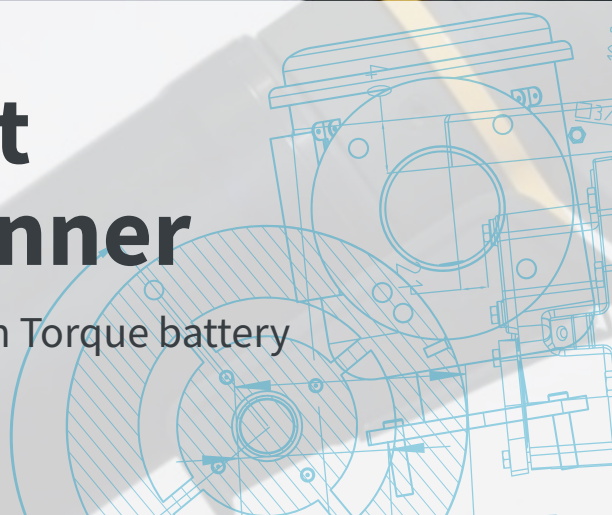


The Atlas Copco logo, consisting of the brand name in a white serif font centered between two horizontal white bars, all contained within a blue square.

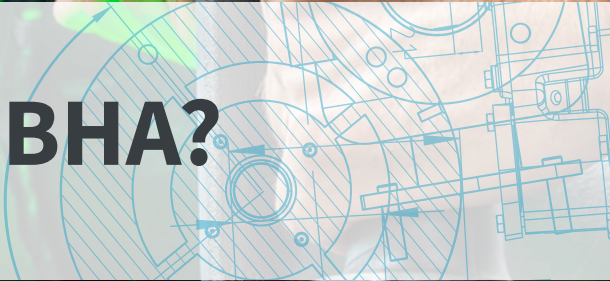
SRBHA - Smart Battery Nutrunner

The worlds most productive High Torque battery
tool.





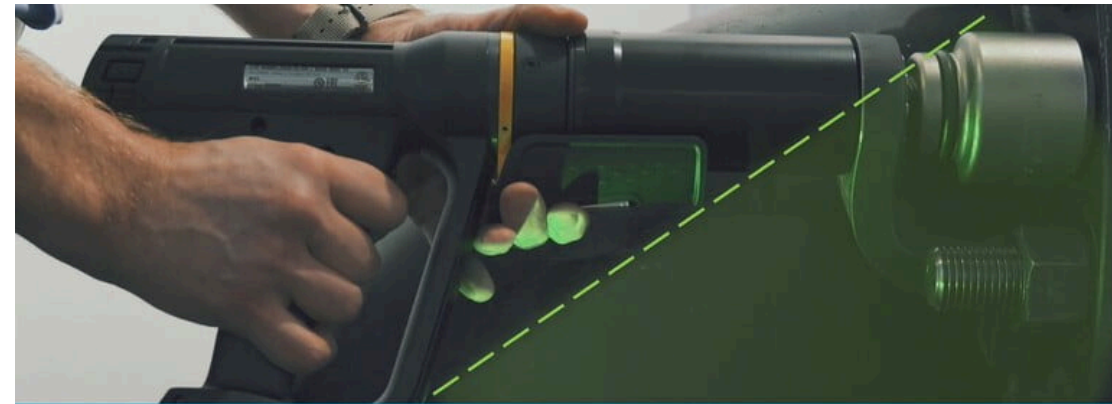
What is the SRBHA?



Bringing Smart technology to a Battery Nutrunner

Atlas Copco has been a preferred supplier to the global manufacturing industry for decades. We were the first company to develop and introduce smart electric tools into the factories more than 30 years ago. With our new high torque battery nutrunner range, we are applying our knowledge and experience to take the smart factory to the field.

Atlas Copco's new battery range is equipped with a torque transducer for maximum reliability. All tools have a powerful motor and a new dual trigger design, minimizing the risk of injuries to operators. We are committed to make the operation process for our customers quicker, safer and smarter.



Smart battery nutrunner SRB HA
A smarter way to tighten bolts



Customer needs



Ergonomics

- Less operator injuries and sick absences.
- Cordless freedom.
- Better operator experience.

Productivity

- High tightening speed.
- Tool availability.
- Improved total process.

Quality

- Reliable tool.
- High quality tightenings.
- Clear feedback feedback to operator.

Documentation

- Data collection.
- Simple process to download tightening data.
- Easy to send data.

Designed for use in multi- industry

The SRBHA has been manufactured to be used in multiple industry's within Energy, and also beyond that.

The tool also can be used on multiple applications, and with it being cordless it makes it much easier to manouvre to difficult access ones.



Dual trigger

- Minimize risk of injury

Accessory Bus

- Possibility to mount barcode scanner

Torque range

- 11 Models: 200/300/500/750/950/1300/
2400/3400/4000/ 4500/ 6500 Nm

Multi functional LED

- White spotlight for dark areas
- OK/NOK feedback for operator

Battery

- 36 V Smart Battery

Ergonomics

- D handle for robustness & safety.



Operator control and feedback

- Display with 3 buttons
- Pset Selection / Quick Torq.
- Simple interface for operator

Drive & performance

- Backup battery
- High performance motor
- Transducer with 5% accuracy



The Atlas Copco logo is located in the top right corner. It consists of the brand name "Atlas Copco" in a white, italicized serif font, centered between two horizontal white bars on a blue rectangular background.

Atlas Copco

The background of the entire page is a photograph of a black and yellow Atlas Copco power tool, possibly a sandblaster, resting on a heavily rusted metal surface. The tool has a 36V battery pack attached to its handle. The background is blurred, showing yellow industrial equipment.

Features and Benefits

What can you expect from the tool?

Three models to suit any user



Digital

- Set torque and go
- Ready to use straight out the box



Smart

- Torque and/or angle
- Psets & Batch
- Data Collection



Connected

- Torque and/or angle
- Psets & Batch
- Data Collection
- Connected to torque controller PF6000
- Full Functionality license

SRBHA: Digital Version

- Entry level tool
- Target torque only
- Simply set target torque via HMI buttons
- Ready to use straight out of the box
- OK / NOK Statusmessages based on torque readings



SRBHA: Smart Version

- Use any device to program tool via Wifi, the SRB HA works as an access point
- Scan QR codes in HMI display for quick connection
- No external software needed. Simply use your web browser.
- Torque, angle or torque plus angle strategies possible
- Up to 10 Psets
- Up to 10 Batches
- Use any device to download data via Wifi in .csv format
- OK / NOK Statusmessages based on torque & angle readings



SRBHA: Connected Version

- Connect to a PF6000 controller via Bluetooth or Wifi infrastructure using TTS2.
- Select functionality via license type of virtual station.
- Possibility to add multiple accessories.
- Live data sent to controller and any other system.



Reference matrix by functionality

Feature	Digital	Smart	Connected
Set & Go on the tool	√	√	-
Torque target	√	√	√
Angle target	-	√	√
Angle monitoring	-	√	√
Accessories	-	√	√
Data collection	-	√	√
Live data feed	-	-	√
Psets	-	10	250*
Batch	-	10	25*
Accuracy	+5%	+5%	+5%

Which model suits your needs the best?

Digital

Smart

Connected

Interactive poll not supported

[View online version](#)

Post answer

See the different functionalities below!



Introduction to the smart battery nutrunner SRBHA | Bolting Academy 1.0

The Atlas Copco logo is located in the top right corner of the image. It consists of the brand name "Atlas Copco" in a white, serif font, centered between two horizontal white bars on a dark blue rectangular background.A semi-transparent technical drawing overlay is positioned behind the main text. It features various mechanical sketches, including circular cross-sections, bolt patterns, and assembly diagrams in a light blue color.

Technical information & Ordering Numbers



SRBHA - Torque range: 200 - 750



Model	Torque range [Nm]	Speed [rpm]	Weight [Kg]	Spline / Wave	Sq. drive	Gear dia [mm]	Length [mm]	Tool only Order no.	Complete kit Ordering No.
ETP SRB81-200-20	60-200	139	3.63	S 3	3/4"	54	338	8433250111	8433250191
ETP SRB81-200-20-D	60-200	139	3.63	S 3	3/4"	54	338	8433250101	8433250181
ETP SRB81-300-20	90-300	103	3.63	S 3	3/4"	54	338	8433250211	8433250291
ETP SRB81-300-20-D	90-300	103	3.63	S 3	3/4"	54	338	8433250201	8433250281
ETP SRB81-500-20	150-500	65	4.56	S 4	3/4"	67	368	8433250311	8433250391
ETP SRB81-500-20-D	150-500	65	4.56	S 4	3/4"	67	368	8433250301	8433250381
ETP SRB81-750-25	225-750	46	4.87	S 4	1"	67	387	8433250411	8433250491
ETP SRB81-750-25-D	225-750	46	4.87	S 4	1"	67	387	8433250401	8433250481

D = Digital

Kit = Tool, battery charger, S-Type reaction bar, 2 batteries in a case

Weight = Tool only

SRBHA - Torque range: 950 - 3400



Model	Torque range [Nm]	Speed [rpm]	Weight [Kg]	Spline / Wave	Sq. drive	Gear dia [mm]	Length [mm]	Tool only Order no.	Complete kit Ordering No.
ETP SRB81-950-25	285-950	35	5.04	S 5	1"	67	398	8433259511	8433259591
ETP SRB81-950-25-D	285-950	35	5.04	S 5	1"	67	398	8433259501	8433259581
ETP SRB81-1300-20-HA	390-1300	23	4.7	W 40	3/4"	63	384	8433250611	8433250691
ETP SRB81-1300-20-HA-D	390-1300	23	4.7	W 40	3/4"	63	384	8433250601	8433250681
ETP SRB81-2400-25-HA	720-2400	11	6	W 47	1"	67	431	8433250711	8433250791
ETP SRB81-2400-25-HA-D	720-2400	11	6	W 47	1"	67	431	8433250701	8433250781
ETP SRB81-3400-25-HA	1020-3400	7	7.7	W 60	1"	82	444	8433250011	8433250091
ETP SRB81-3400-25-HA-D	1020-3400	7	7.7	W 60	1"	82	444	8433250001	8433250081

D = Digital

Kit = Tool, battery charger, S-Type reaction bar, 2 batteries in a case

Weight = Tool only

SRBHA - Torque range: 4000 - 6500



Model	Torque range [Nm]	Speed [rpm]	Weight [Kg]	Spline / Wave	Sq. drive	Gear dia [mm]	Length [mm]	Tool only Order no.	Complete kit Ordering No.
ETP SRB81-4000-25-HA	1200-4000	5	7.7	W 60	1"	82	444	8433250811	8433250891
ETP SRB81-4000-25-HA-D	1200-4000	5	7.7	W 60	1"	82	444	8433250801	8433250881
ETP SRB81-4500-HA	1350-4500	3.6	7.9	W 60	1,5"	82	444	8433250911	8433250991
ETP SRB81-4500-HA	1350-4500	3.6	7.9	W 60	1,5"	82	444	8433250901	8433250981
ETP SRB81-6500-HA	1950-6500	2.6	12.1	W 72	1,5"	102	481	8433251011	8433251091
ETP SRB81-6500-HA	1950-6500	2.6	12.1	W 72	1,5"	102	481	8433251001	8433251081

D = Digital

Kit = Tool, battery charger, S-Type reaction bar, 2 batteries in a case

Weight = Tool only

Accessories Overview

Accessories		Ordering No.				
Tool model	A. Steel Bar	B. S-type	C. Sliding drive	D. Square bracket	E. Deep socket S-type	F. Suspension yoke
SRB HA 1300	4210 4757 90	4210 4480 90	4210 4752 90	4210 4758 90	4210 4480 70	4216 7100 18
SRB HA 2400	4210 4757 93	4210 4480 94	4210 4752 93	4210 4758 93	4210 4480 74	4216 7100 18
SRB HA 3400/4000	4210 4757 85	4210 4480 85	4210 4752 85	4210 4785 85	4210 4480 75	4216 7100 17
SRB HA 4500	N/A	N/A	N/A	N/A	4210 4480 76	4216 7100 17
SRB HA 6500	4210 4757 92	4210 4480 92	4210 4752 92	4210 4758 92	N/A	4216 7100 19

A



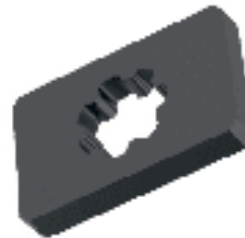
B



C



D



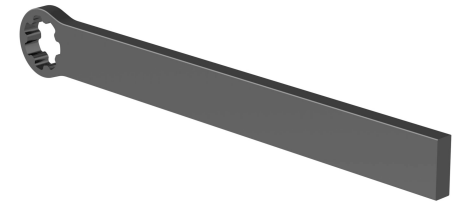
E



F



Accessories



Steel Bar

Spline type	Wave type	Max Torque [Nm]	Dimensions [mm]	CC Distance [mm]	Ordering number
n/a	40	1300	502 x 48 x 16	n/a	4210 4757 90
n/a	47	2400	545 x 54 x 20	n/a	4210 4757 93
n/a	60	4000	620 x 80 x 20	n/a	4210 4757 85
3	n/a	300	400/56/12	n/a	4210 2219 80
4	n/a	500	500/62/15	n/a	4210 2183 80
5	n/a	1000	500/62/15	n/a	4210 2726 80

Accessories



Sliding Drive

Spline type	Wave type	Max Torque [Nm]	Dimensions [mm]	CC Distance [mm]	Ordering number
n/a	40	1300	n/a	76-191	4210 4752 90
n/a	47	2400	n/a	81-182	4210 4752 93
n/a	60	4000	n/a	84-199	4210 4752 85
3	n/a	170	1/2	70-120	4210 4481 98
3	n/a	300	3/4	70-120	4210 4481 93
3	n/a	170	1/2	82-218	4210 4616 98
3	n/a	240	3/4	82-218	4210 4616 93
4	n/a	500	3/4	76-126	4210 4481 94

Click here to open full
table in browser:

<https://atlascope.turtl.co/story/srbha-leaflet-en/page/4/6>

Accessories



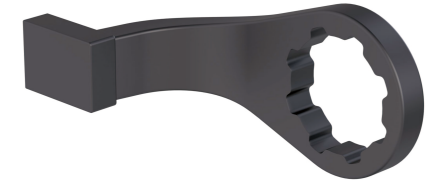
Square bracket

Spline type	Wave type	Max Torque [Nm]	Dimensions [mm]	CC Distance [mm]	Ordering number
n/a	40	1300	64 x 120	n/a	4210 4758 90
n/a	47	2400	71 x 120	n/a	4210 4758 93
n/a	60	4000	101 x 180	n/a	4210 4758 85

Square steel bracket

Spline type	Wave type	Max Torque [Nm]	Dimensions [mm]	CC Distance [mm]	Ordering number
3	n/a	300	100/50/12	n/a	4210 2219 03
4	n/a	500	125/65/16	n/a	4210 2183 01
5	n/a	1000	125/65/16	n/a	4210 2726 01

Accessories



S-Type reaction bar

Spline type	Wave type	Max Torque [Nm]	Dimensions [mm]	CC Distance [mm]	Ordering number
n/a	40	1300	n/a	n/a	4210 4480 90
n/a	47	2400	n/a	n/a	4210 4480 94
n/a	60	4000	n/a	n/a	4210 4480 85
3	n/a	300	n/a	n/a	4210 4480 03
4	n/a	500	n/a	n/a	4210 4480 04
5	n/a	1000	n/a	n/a	4210 4480 05

Accessories

Remaining accessories

Bar type	Spline type	Wave type	Max Torque [Nm]	Dimensions [mm]	CC Distance [mm]	Ordering number
Triangular steel bracket	3	n/a	300	82/80/15	n/a	4220 2137 03
L-Type aluminium bar	3	n/a	200	266x300/ 29/15	n/a	4210 2219 08
L-Type aluminium bar	4	n/a	500	144x150/ 42/15	n/a	4210 2183 08
Straight aluminum bar	3	n/a	125	L = 400	n/a	4210 2219 81
Extended sliding drive	5	n/a	700	1	68-112	4210 4498 90
Extended sliding tube	5	n/a	700	1	68-112	4210 4498 92

Thank you for reading

**Reach out to our
product manager to
learn more**

Italy Contact: andrea.mascheri@atlascopco.com

or: alessandro.aina@atlascopco.com

