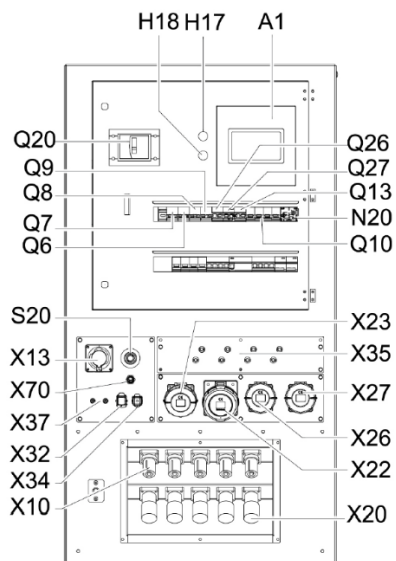


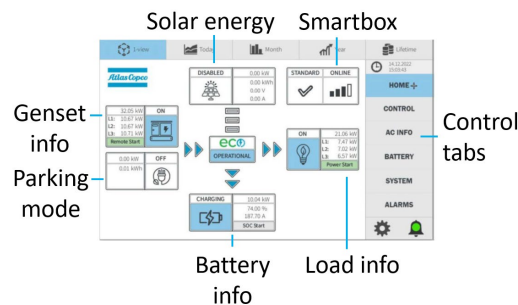
CUBICLE ZBP45-XX / ZBP15-45



- Legend:
- A1= Zc1510 controller
 - H17= INPUT ACTIVE LED
 - H18= OUTPUT ACTIVE LED
 - Q6,7,8,9= SOLAR BREAKER 2P 20A
 - Q10= BREAKER 4P 100/63A
 - Q13= BREAKER 2P 16A
 - Q20= BREAKER 4P 160A
 - Q26,27= RCBO C16 30MA
 - N20= ELR 30-300mA
 - S20= EMERGENCY STOP
 - X10= INPUT POWER LOCKS
 - X13= INPUT 16A SOCKET
 - X20= OUTPUT POWER LOCKS
 - X22= 5P 63A SOCKET
 - X23= 5P 32A SOCKET
 - X26= 3P 16A SOCKET
 - X27= 3P 16A SOCKET
 - X34= HARTING CONNECTOR 4P
 - X32= HARTING CONNECTOR
 - X35= SOLAR CONNECTORS
 - X37= REMOTE START
 - X70=RJ45

(1) Not all models follow this drawing, please check Instruction Manual.

CONTROL PANEL



START THE ZBP

- Switch on the battery switch on the DC Cubicle.
- Turn the switch a quarter more to START position.
- Make sure the switches from the inverter are in ON position.



- Once controller is on, switch on the inverter from the Zc1510 in the CONTROL tab.



• ISLAND MODE⁽²⁾:

- Plug the load to the output socket or output powerlocks.
- Close the Q20 output breaker.

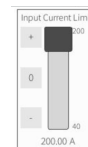
• HYBRID WITH GENERATOR/GRID⁽³⁾:

- Select on the controller the input type as generator or grid.



- Plug in the input socket or powerlocks of the ZBP to the output of the generator.
- Plug in the output socket or powerlocks of the ZBP to the load
- Plug in the remote start signal from the generator to the X32 or X37 connector
- Configure the Input current limit according to the data plate of the generator as follows:

$$\text{Input current limit} = I_{gen} * 0.8$$



- Set the remote start signal in Auto.



- Switch on the output breaker of the generator
- Switch on the Q10 input breaker of the ZBP.
- Turn on the generator and set it to AUTO mode
- Switch on the Q20 output breaker of the ZBP and socket breakers.

RECHARGE

Parking mode

- Follow the start procedure
- Connect the X12 parking mode input.
- Switch on Q12 breaker.

Terminal board or camlocks

- Follow the Hybrid mode with generator/grid.
- If you need to force charging, start manually the generator
- Set Remote Start to MANUAL and ON.



- For different MODE, check Applications section in the Instruction Manual.
- Wizard available on the control tab.

STOP THE ZBP

- Switch the input and Q20 output breaker off
- Switch off the generator.
- Turn off the inverters



- Switch off the battery switch on the DC cubicle for storage or transport.



APPLICATIONS

For additional application mode check the instruction manual

WARNING

- Never open the cubicle or inverter covers when ZBP is ON. High risk of electric shock!
- Never turn off the battery switch or disconnect a battery while the ZBP is on load.
- Keep the ZBP's door closed.