

# RENTAL TIME

More than just machines

Atlas Copco Celebrates  
150 years of innovations

Contingency Plan - What is your plan B?

New Innovations

Atlas Copco

Atlas Copco  
Rental

# CONTENT

Page 3

Atlas Copco celebrates 150 years of innovations

Page 4

Your local contacts

Page 5

New innovations

E35 Prototype, PTE900, PBE 1600 VSD+



Page 9

100% Oil- free vs. technical oil-free  
What is the difference?

Page 10

Contingency Plan  
What is your plan B?

Page 11

Green Charging  
Powering anytime, anywhere

Page 11

Total Solutions

## Dear reader

Welcome to the latest edition of the Atlas Copco Rental Time magazine, where we dive into the innovative world of our temporary rental solutions. As we all know, sustainability has a strong influence on decision-making, as goals to minimize emissions are growing in many sectors. Sustainable development has been part of our strategy since the beginning, which is why we invest in product development and constantly bring more efficient, durable, and environmentally friendly equipment's to the market, so that our customers can continue to get benefit from the best quality and reliability.

We have brought several new devices to our selection this year. In this issue, we present you E35 Prototype, PTE 900 and PBE 1600 VSD+ electric driven compressors. You will also get to know our Contingency planning and as this year is our company 150 years anniversary, you will get to know something about our history.

On behalf of Atlas Copco Rental Denmark, we would like to wish you a Merry Christmas and a Happy New Year filled with happiness and success.

Wishing you a delightful read,

Atlas Copco Rental Denmark

Atlas Copco 150 years!

## Atlas Copco Celebrates 150 years of innovations



2023 marks the 150th anniversary of the Atlas Copco Group and one and a half centuries of pioneering industrial innovation. Starting with a single Swedish venture, we have grown into an expansive group of brands spanning the entire globe.

Since the start in 1873 we have strived to find new, innovative solutions to society's challenges. We started by supplying products for the railway expansion in the late 1800s and from there expanded into compressors, tools and rock drills needed to industrialize the world. Today, we hold world-leading positions in many of the same industries, but also in completely new segments such as vacuum. Still, our purpose remains the same: creating a better tomorrow by empowering our customers to grow and drive society forward.

Throughout our history, our innovative spirit and our values – innovation, sustainability, doing business in an ethical way – have remained intact. However, most of all it's about passionate people and their drive and ideas to find new and better ways to shape the future.

[Want to read more about our history?](#)



# Your local contacts

## Michael Nohr- Petersen

Senior Key Account Manager  
+45 249 426 00  
[michael.nohr-petersen@atlascopco.com](mailto:michael.nohr-petersen@atlascopco.com)

## Erfan Danesh

Area Sales Manager  
+45 6098 7628  
[erfan.danesh@atlascopco.com](mailto:erfan.danesh@atlascopco.com)

## John Bergström

Steam Service & Project Engineer  
+45 307 388 29  
[john.bergstrom@atlascopco.com](mailto:john.bergstrom@atlascopco.com)

## Gritt Aaberg

Rental Desk Coordinator  
+45 315 293 33  
[gritt.aaberg@atlascopco.com](mailto:gritt.aaberg@atlascopco.com)

## Kjeld Nielsen

Service Technician  
+45 301 505 95  
[kjeld.nielsen@atlascopco.com](mailto:kjeld.nielsen@atlascopco.com)

## Søren Olsen

Rental Desk Coordinator  
+45 54330646  
[soren.olsen@atlascopco.com](mailto:soren.olsen@atlascopco.com)

## Henrik Andersen

Field Service Engineer  
+45 301 504 74  
[henrik.andersen@atlascopco.com](mailto:henrik.andersen@atlascopco.com)

## Jan Saltoft

Nordic Service Supervisor  
[jan.saltoft@atlascopco.com](mailto:jan.saltoft@atlascopco.com)

## Atlas Copco Rental

Djursvang 5b  
2620 Albertslund  
[rental.denmark@dk.atlascopco.com](mailto:rental.denmark@dk.atlascopco.com)  
**24/7** +45 4345 4611

## Atlas Copco Rental Offshore

Vestkraftkaj 4A  
6700 Esbjerg

[rental.denmark@dk.atlascopco.com](mailto:rental.denmark@dk.atlascopco.com)  
+45 2494 2600  
**24/7** +45 4345 4611



# Our E35 Prototype

## Higher pressure, cleaner energy.

When you find yourself in the driver's seat, you often have to push your way forward and not simply tag along for the ride. With the Atlas Copco Rental Europe Concept Lab, we do just that. With our in-the-field expertise, we pioneer newer and more efficient technologies that are made for real-life application. One of these innovations is the E35 prototype, which will be part of our electric rental fleet in the future. While this is not the first electric-driven compressor, and obviously not the last, the E35 prototype sets itself apart due to some unique characteristics. Thanks to innovations like the Concept Lab's newest prototype, Atlas Copco Rental can continue to actively reduce the environmental impact of renewable energy projects in the construction phase. Vital for our future. All of our futures.

## Supporting the global green energy transition

Some say it's too late. Some say we, as a species, had our time. We believe that the time of the true innovators is now. Local and global  $CO_2$  emissions have to be reduced even further and much sooner than most assumed. At the vanguard of innovation are our customers, who lay the foundation of our global path to zero-emission. Every phase of a renewable energy project will be re-evaluated to increase efficiency where possible and decrease harmful emissions where necessary. The Y35, the diesel-driven 35 bar high-pressure solution, has proven its worth in a variety of in-the-field applications. From deep drilling to pipeline cleaning for natural gas projects. The Y35's are doing their part. But, with increased scrutiny comes new demands. Our experts, who have their boots in the mud and engine oil on their hands, always have their ears to the ground. They learned that, even though the Y35's performance is more than adequate; an electric high-pressure solution would be ideal for decreasing the impact of the project's construction.

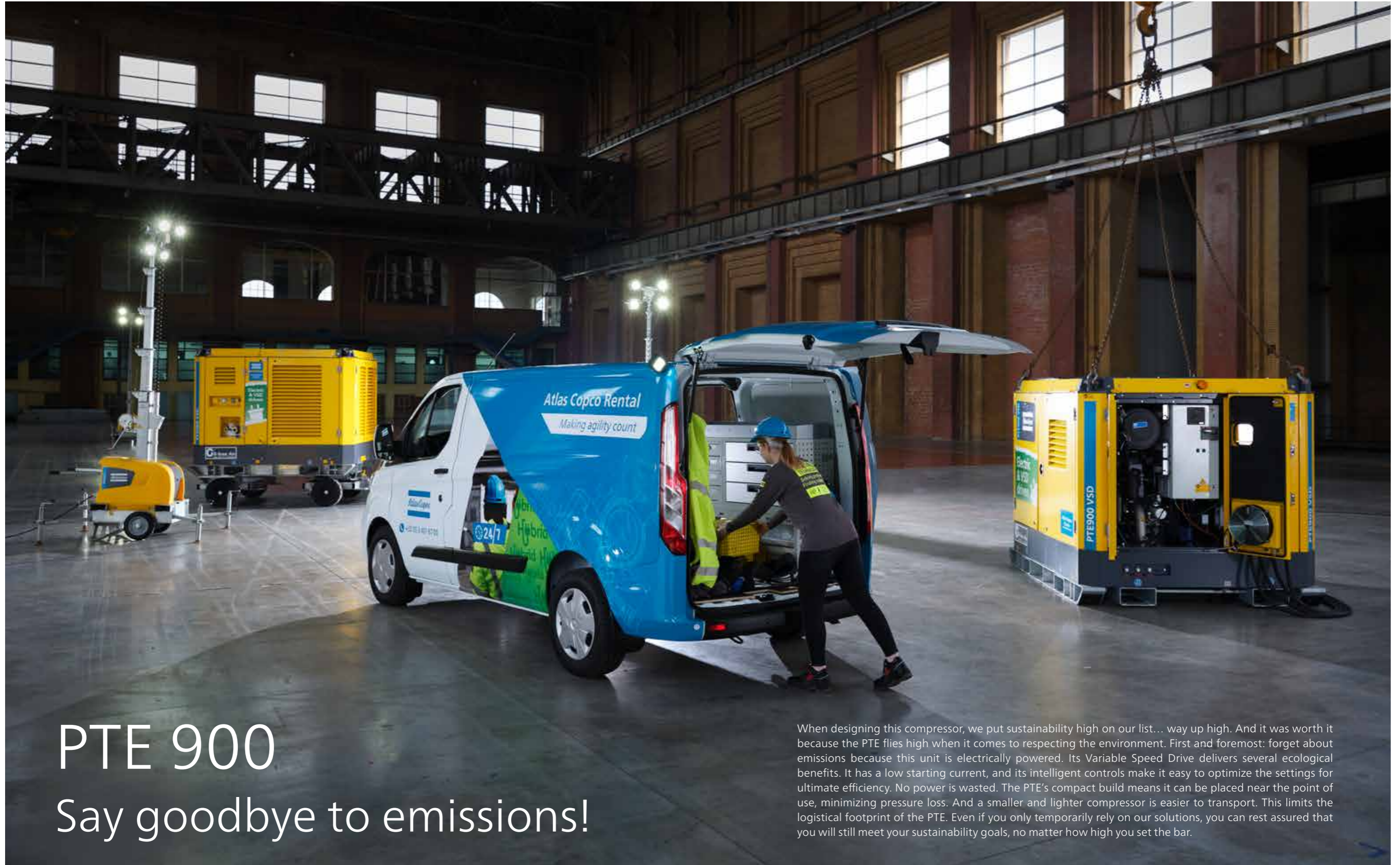


## Under the yellow and green hood

At Atlas Copco Rental, we are making agility count! We do more than listening. We act, think, draw, try, fail, try again, ... The E35 is the first portable high-pressure electric driven compressor ever to be produced! The E35 prototype has all the benefits of our existing Y35 while at the same time being emission-free, efficient, and robust. This means that the E35 also delivers a high penetration rate with 35 bar pressure and 34.8m<sup>3</sup>/min, making it the ideal solution for heavy drilling, pipeline services, and urban construction applications. We will proceed with vigorous in-the-field testing to measure runtime, parameters, and performance in the upcoming weeks. As well as safety features and basic functionality.

**Did you know that the E 35 is already in our fleet ready for rent? For more information, contact us!**

[rental.denmark@dk.atlascopco.com](mailto:rental.denmark@dk.atlascopco.com)  
**+45 4345 4611**



# PTE 900

## Say goodbye to emissions!

When designing this compressor, we put sustainability high on our list... way up high. And it was worth it because the PTE flies high when it comes to respecting the environment. First and foremost: forget about emissions because this unit is electrically powered. Its Variable Speed Drive delivers several ecological benefits. It has a low starting current, and its intelligent controls make it easy to optimize the settings for ultimate efficiency. No power is wasted. The PTE's compact build means it can be placed near the point of use, minimizing pressure loss. And a smaller and lighter compressor is easier to transport. This limits the logistical footprint of the PTE. Even if you only temporarily rely on our solutions, you can rest assured that you will still meet your sustainability goals, no matter how high you set the bar.

# PBE 1600 VSD+

## High pressure in a smaller package

Cost-effective performance, sustainable, no emissions, small footprint, low noise levels, refinery spec, and plug-and-play. These are just a handful of the PBE1600 VSD+'s benefits. It might be smaller than its diesel-driven counterparts, however, it can handle the (high) pressure and give the boost you need.

### Let's talk numbers!

Zeros, hundreds, and many more. Let's start with zero. The PBE 1600 VSD+ is ISO 8573-1 CLASS 0 (2010) certified. This means that the Air, Argon, Nitrogen, or CO<sub>2</sub> you want to boost meets the highest standards and is compliant with the strictest regulations. Only with Class-0 oil-free air can you be 100% sure. Click here to find out more about our Class 0 certification. Harmful emissions are also reduced to zero. Electric-driven solutions like the PBE 1600 VSD+ help further reduce harmful emissions, and equipment like this is ideal when you have ambitious sustainability goals. A booster boosts. That makes noise. There isn't much we can do about that. However, we did manage to reduce it to 99dB(A) when it's running at full power. Speaking of full power, our new electric-driven booster is capable of boost Air, Nitrogen, or CO<sub>2</sub> up to 25 bar (360 psi) and reach a maximum flow of 3200m<sup>3</sup>/h (1900 cfm). Numbers none of us really likes to talk about is our weight and size. Unless it's a good thing. The PBE1600 VSD+ comes in at approximately 4000kg and is 4020 x 1390 x 2310 (LxWxH). Its small footprint makes it easy to maneuver around the site, yet sturdy enough to take on some of the harsh conditions our Rental equipment is built to endure.

### The driving force

For the right application, the benefits of going electric cannot be overstated: from improved noise levels to no diesel engine emissions; and from improved efficiency to simpler service. Why should you not go electric? As long as you have an electric power source on your site, the electric compressor will always be the most efficient solution. To cut your energy costs, Atlas Copco pioneered Variable Speed Drive (VSD) technology in the compressed air industry. VSD leads to major energy-savings while protecting the environment for future generations. Thanks to continual investments in this technology, Atlas Copco offers the widest range of integrated VSD compressors on the market. The compressors closely follow the air demand by automatically adjusting the motor speed. his results in significant energy savings of up to 35%.

### Teamwork

In tandem with the current electric-driven oil-free fleet, the PBE1600 VSD+ is perfect to boost the Air, Argon, Nitrogen, or CO<sub>2</sub> to the pressure you require, at the purity you're used to! Applications can range from Process Gas Boosting in refineries and chemical plants. Argon Boosting in cryogenic plants to Pressure Testing and Catalyst Regeneration. Even when you rely on temporary Atlas Copco Specialty Rental Total Solutions, you can continue to reduce your carbon footprint and expect to meet the highest standards you are used to. With the PBE1600 VSD+ we can efficiently boost Air, Argon, Nitrogen, or CO<sub>2</sub> and do so in the most sustainable way possible.



In industries where air quality is critical for both end product and production process, we can't afford to compromise and risk oil contamination. That's when compressed air needs to be absolutely oil-free. A 100% oil-free air compressor will do the trick, but compressors with oil removal filters can also deliver oil-free air that is often referred to as 'technical oil-free'. The question is, can they guarantee the same air quality and purity as 100% oil-free?

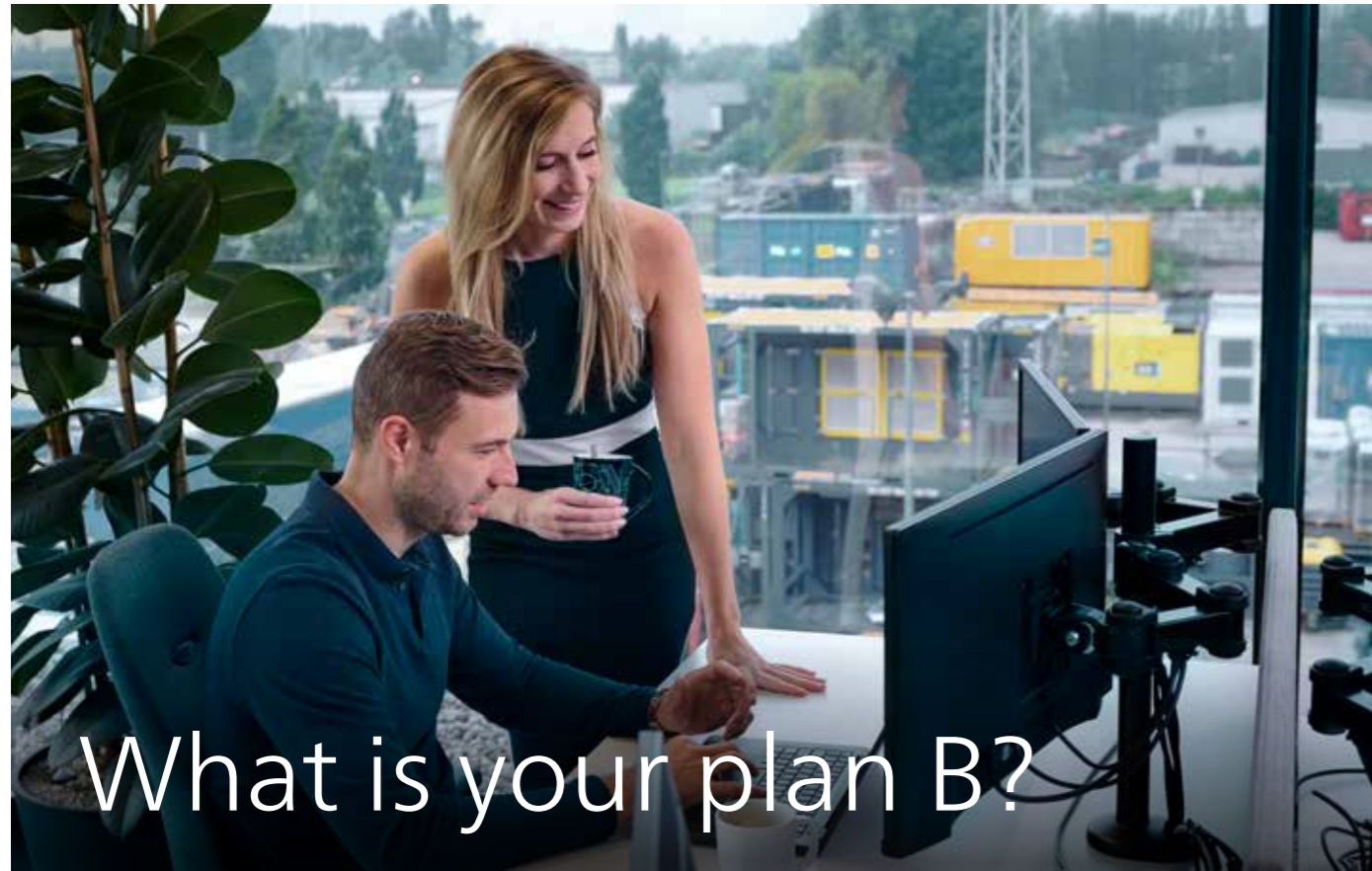
Manufacturers of air compressors have come a long way to ensure that the air used in critical applications is as pure as possible. Oil contamination, even by the smallest quantities, could result in process contamination. The consequences? Operations slowing down or stopping altogether, higher defect ratios, higher need for maintenance ... in short: significant loss of productivity. That is why all production managers in critical applications industries prefer the ISO 8573-1 Class Zero oil-free compressors that provide clean, 100% oil-free air.

### Technical vs. 100% oil-free air compressors

Both types of compressors will deliver oil-free compressed air in the end, but there are differences. Technical oil-free means oil injected in the compressed air is removed afterwards during a filtration process, while Class Zero means absolutely no oil in the compressed air ever, at all. If you inject oil to remove it afterwards, you will need an oil-separator, coalescing filters to remove most liquid oil, as well as active carbon filters to remove oil vapors. During this filtration process, failures may happen: separators may break, filters may become saturated and the total lifetime will reduce drastically at high temperatures. By choosing 100% oil-free air right from the start, you will have peace of mind. This goes for both environmental aspects and business productivity: you'll minimize energy waste, eliminate the need for condensate treatment, and at the same time reduce maintenance interventions.



VS.  
OIL-FREE  
OIL-FREE



# What is your plan B?

Contingency Planning can be summarized as developing a good 'Plan B'. It does not just mean anticipating the worst disasters such as fires, floods or tornadoes; it's also about preparing for unexpected events and other disruptive unknowns of a smaller scale. What if your main air supply suddenly goes down? Not only will this put a stop to your production process but it will also severely affect your revenue. A good back up plan will minimize your risk and potential losses. That's why it's important to make contingency planning a normal part of your everyday business operations.

To prevent emergency situations, Atlas Copco Rental works with you to create a customized contingency plan that includes all necessary equipment, accessories, access and connection conditions needed to get your operations back to business. In the event of an emergency, we will be there with the perfect solution in no time! With our assistance plan in place your downtime will be minimized and operations can continue.

### What do you get?

To start, we evaluate your actual compressed air usage and air quality requirements to select equipment that will best fit your needs. Then, we prepare a phased plan based on your site requirements including the estimated delivery time. Because we are able to gather fleet from local, national and even international sources, we can ensure that the proper equipment will be readily available.

We will then review space requirements and recommend tie-in points for your system. Part of the planning process is also to ensure our temporary installation complies with your safety and environmental requirements. For example, your installation may require lighting or fencing. All this will be reviewed and coordinated with your people.



# Green Charging Powering anytime, anywhere

Atlas Copco Specialty Rental's "Green charging" modular solution offers an emission-free solution in case grid power isn't available or less reliable. When charging EVs, a reliable power source is vital. Any interruption could lead to ... well, not driving. With "Green charging" we provide a self-sufficient,



low maintenance, safe, and reliable solution suited for events, concerts or festivals, public services, urban construction sites, etc. The Temporary Solution comes standard with a modular power generator running on HVO, the ZBC 250/500 Energy Storage Unit, universal charging module, all necessary accessories, logistical support, and (de)commissioning by our experts.

Is power available but not constantly? Or do you have renewable power available, like solar or wind, to charge the battery pack? We can also remove the HVO-driven generator from the setup and decrease the setup's footprint. The "Green charging" modular solution is a real-life contributor to your ambitious goals thanks to the hybrid combination of HVO-driven generators and the zero-emission Energy Storage Module. Even if you only temporarily rely on our equipment, your targets will still be met. Electric car charging anytime and anywhere has never been easier.

## The Atlas Copco Rental experts come to you with a total solution.

You can always count on state-of-the-art fleet, but it's Atlas Copco Rental's people who bring the true value to your projects. Our experts are at your disposal and help you to develop and implement a contingency plan, determining the exact equipment and specification you will require. Atlas Copco Rental has decades of experience operating across the globe in all sectors: through this experience we have developed a total solution concept:

- We provide our customers safe and reliable installations, designed to meet their needs,
- We manage all logistical services from transport of equipment to delivery of certificates,
- We take care of installation, commissioning and can provide on-site operators,
- To ensure uninterrupted production on your sites we can also offer energy management solutions



Every Rental project is planned individually based on customer needs and requests. In Finland, our PTS 800 supported a waste management firm with their pipeline drying needs, all thanks to the skills of our technicians, Sauli Leino, and salesperson, Anna Nykänen. With the equipment securely mounted on a trailer at our Vantaa depo, the client underwent specialized commissioning training on-site. This mobile setup is ideal for operations in both Imatra and Kemi, allowing for seamless transitions without the hassle of decommissioning.



**Atlas Copco  
Rental**

**Atlas Copco Rental Denmark**  
Djursvang 5b, 2620 Albertslund - Denmark

**Rental Offshore**  
Vestkraftkaj 4a, 6700 Esbjerg - Denmark

rental.denmark@dk.atlascopco.com | +45 4345 4611  
[www.atlascopcorental.dk](http://www.atlascopcorental.dk)