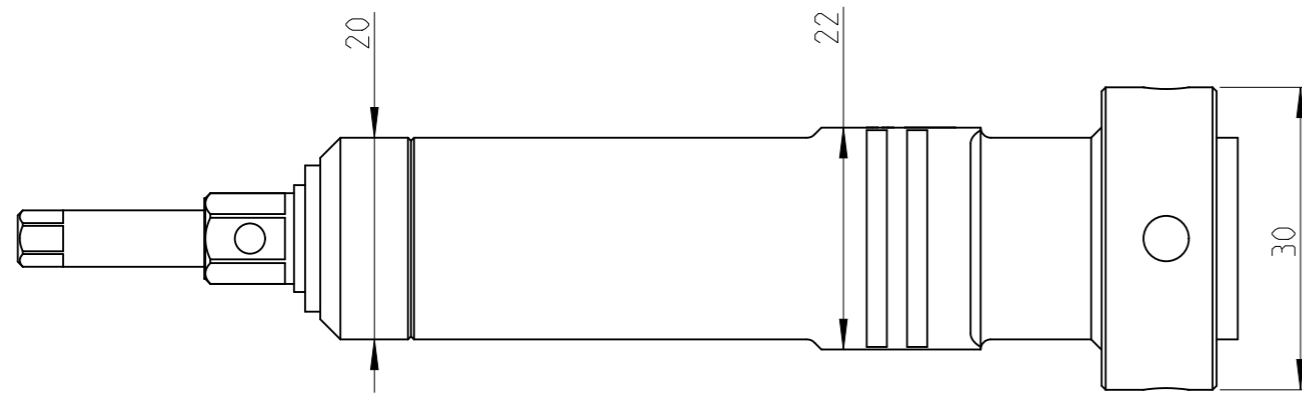
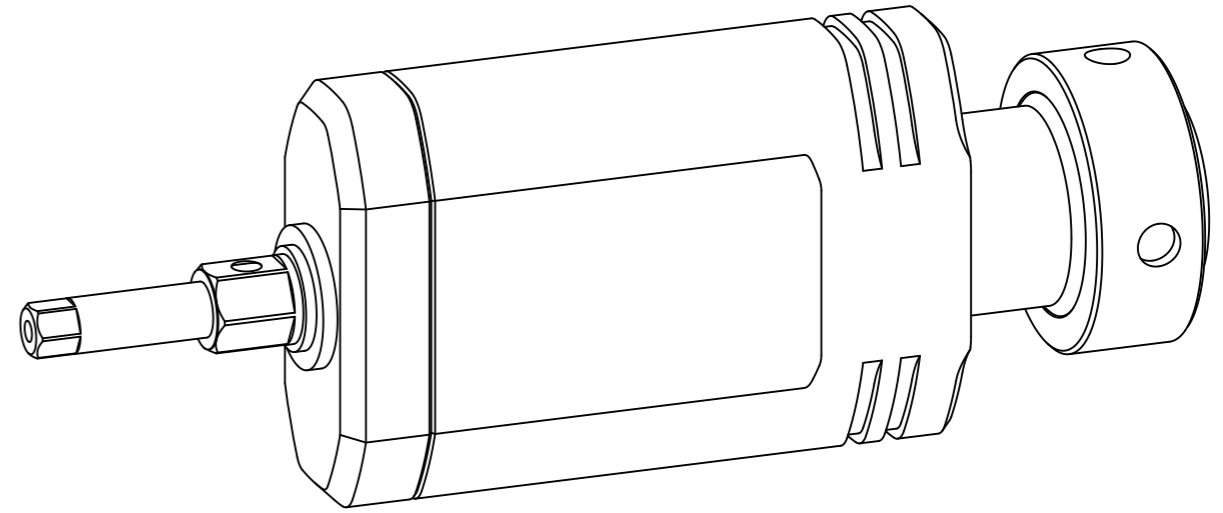
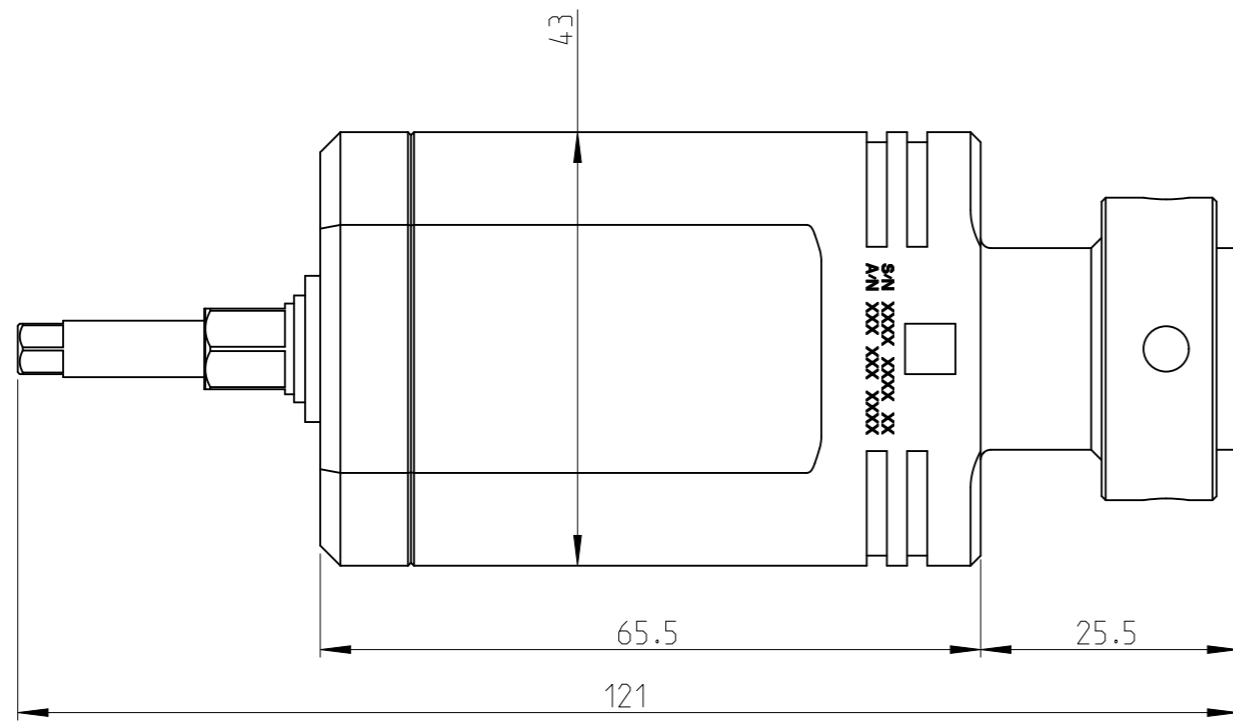


PART	3512131080_NOIP	Status	In Work	Rev./Iter	0.4
Drawing	3512131080_NOIP	Status		Rev./Iter	0.0



Input Size	Male hex 1/4"
Theoretical efficiency	0.86
Gear ratio	1.2491
Max output torque	12.5 Nm
Max input torque	11.7 Nm
Approximate weight	0.23 kg
Max hex output size A/F	7/16"

proprietary document. Not to be used in any way without our consent.

**SALTUS**

Name

GFA-HIT-H-12-22-22-0

Designation

3512 1310 80