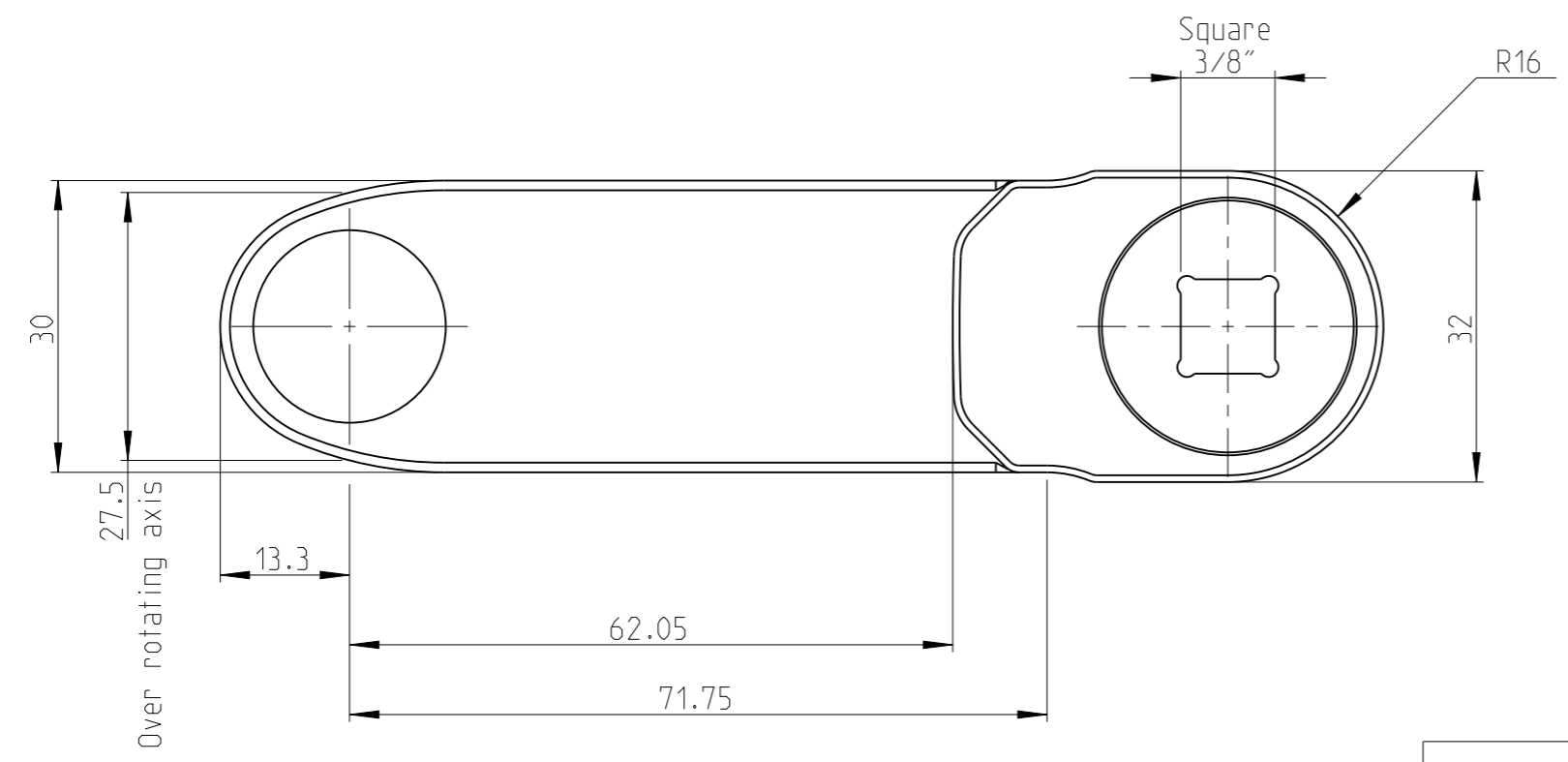
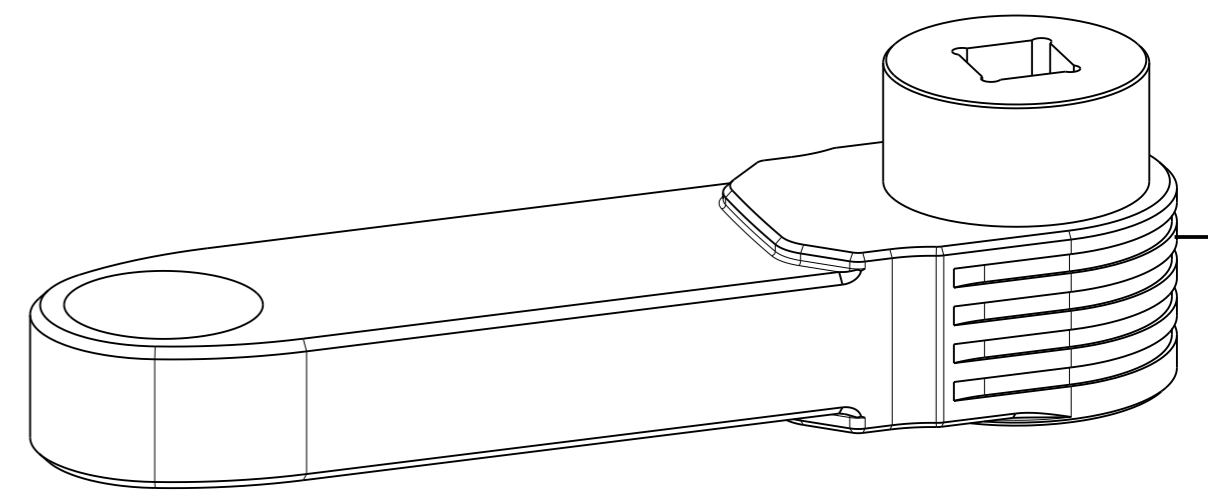
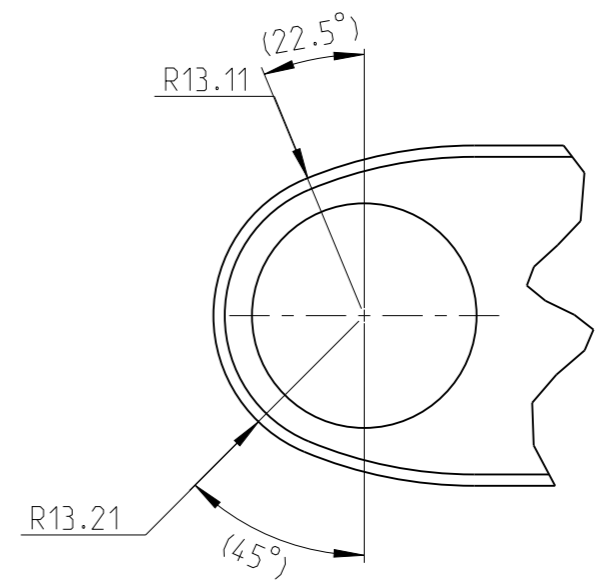
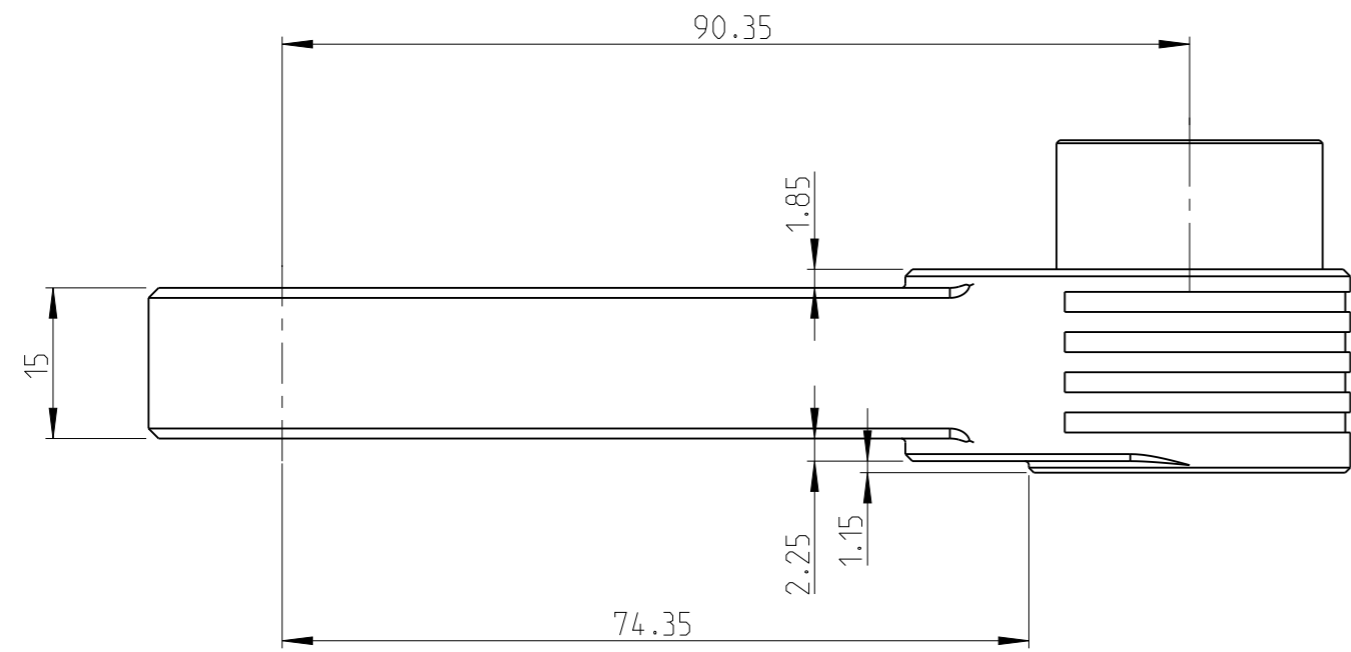


PART	GFA-COT-41-NCIP	Status	In Work	Rev./Iter	0.7
Drawing	GFA-COT-41-NCIP	Status		Rev./Iter	0.6



Input size	Square 3/8"
Gear stages	4
Theoretical efficiency	0.75
Gear ratio	1.08
Max output torque	31.00 Nm
Max input torque	38.27 Nm
Approximate weight	0.39 kg
Max hex output size A/F	15 mm

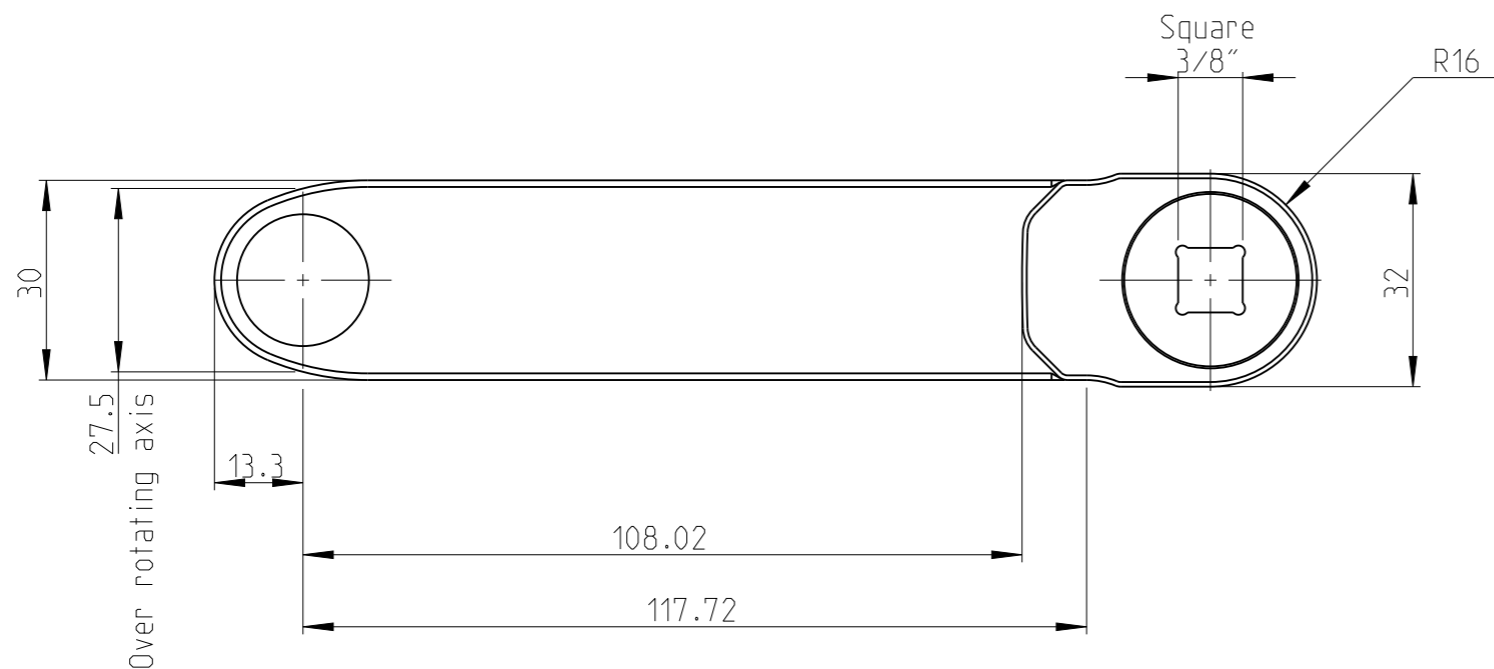
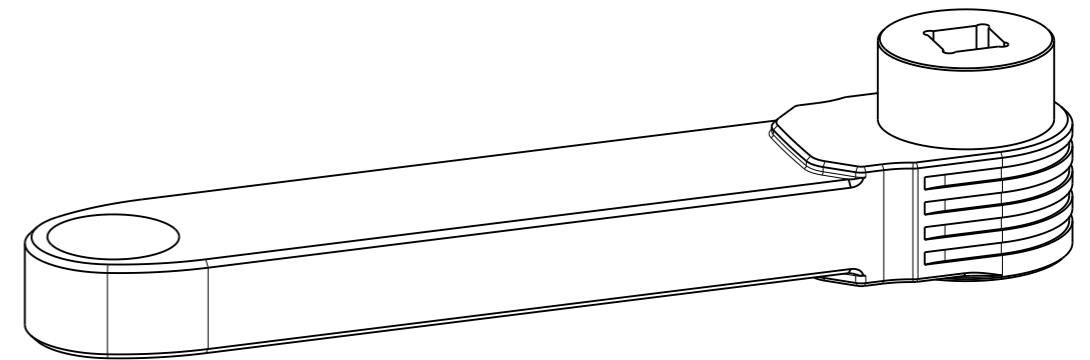
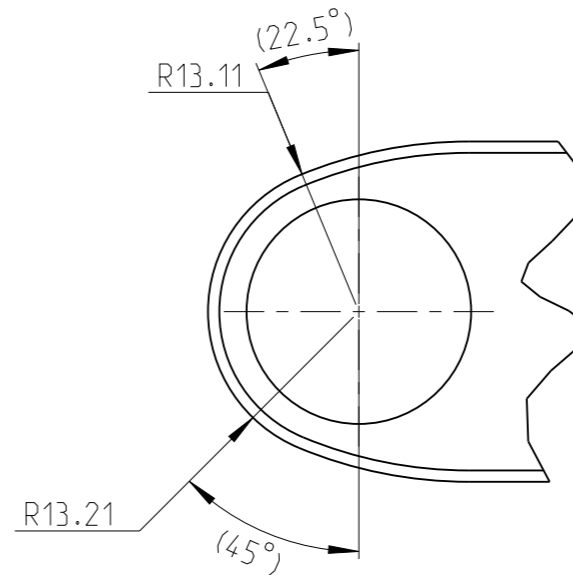
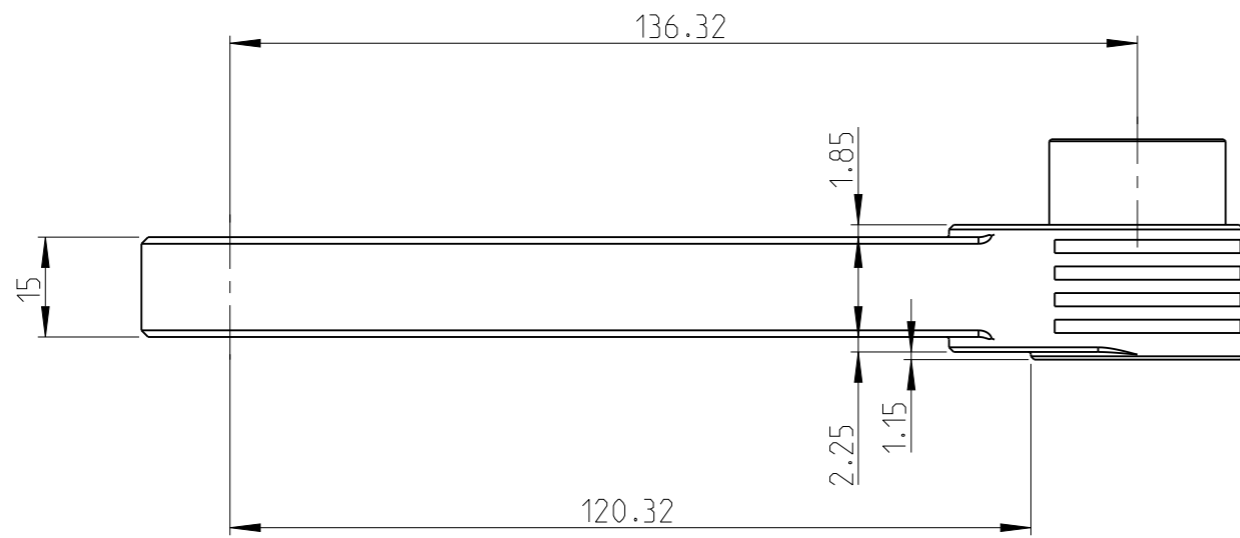
proprietary document. Not to be used in any way without our consent.

**SALTUS**

Name: GFA-COT-B-41-13-15-4

Designation: 3512150180

PART	GFA-COT-41-NCIP	Status	In Work	Rev. / Iter	0.7
Drawing	GFA-COT-41-NCIP	Status		Rev. / Iter	0.6

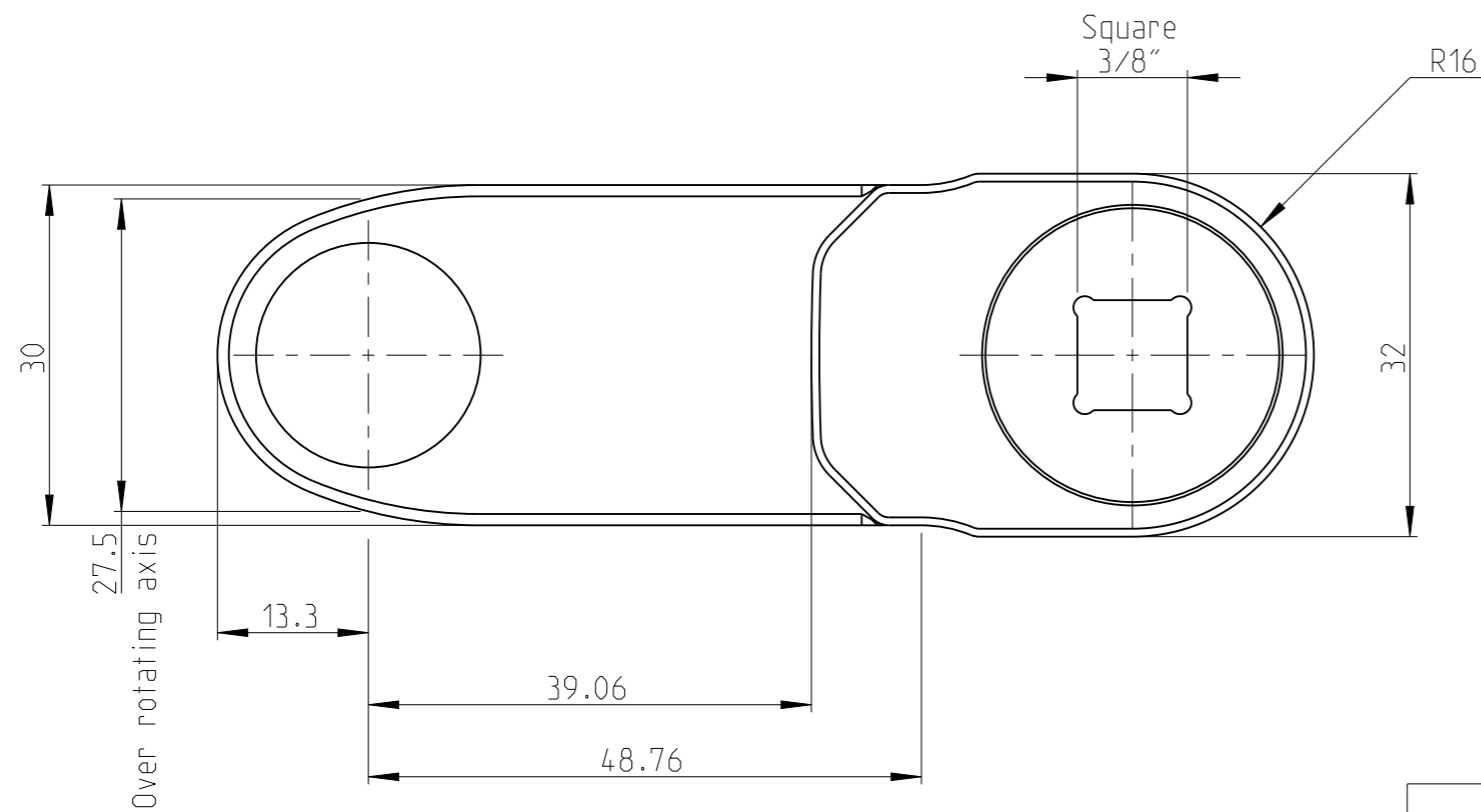
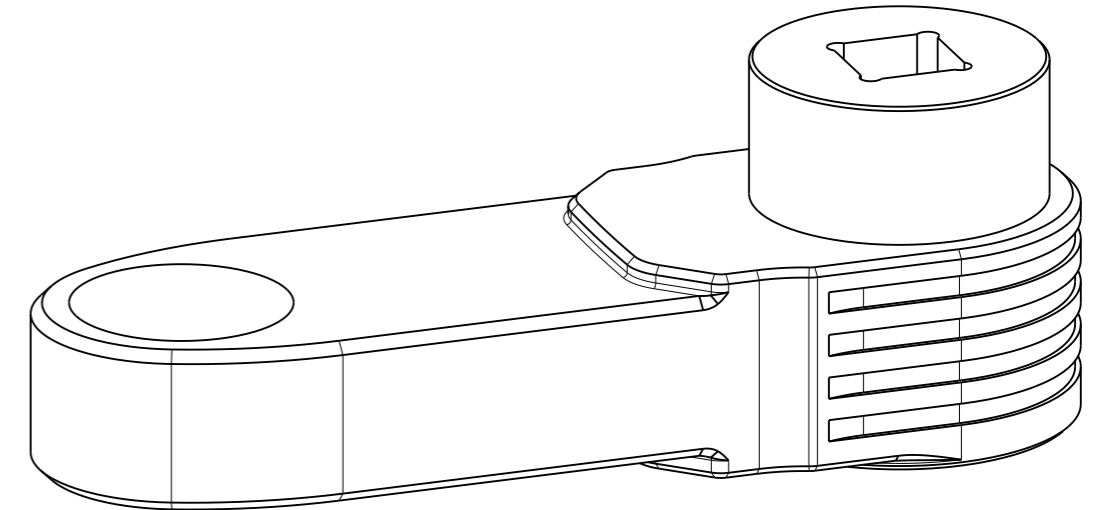
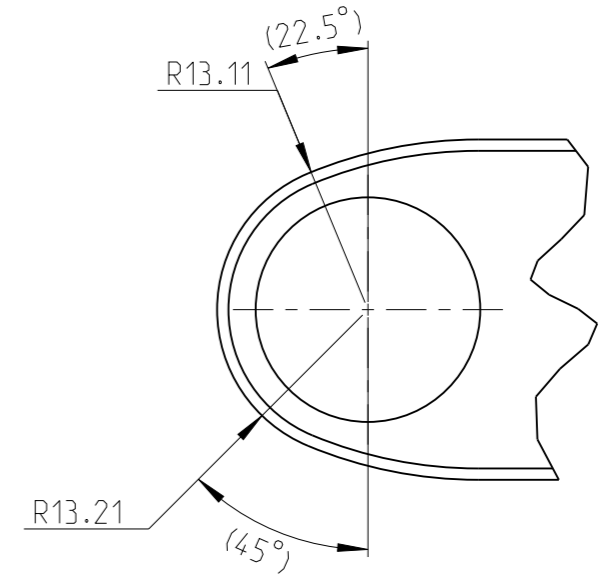
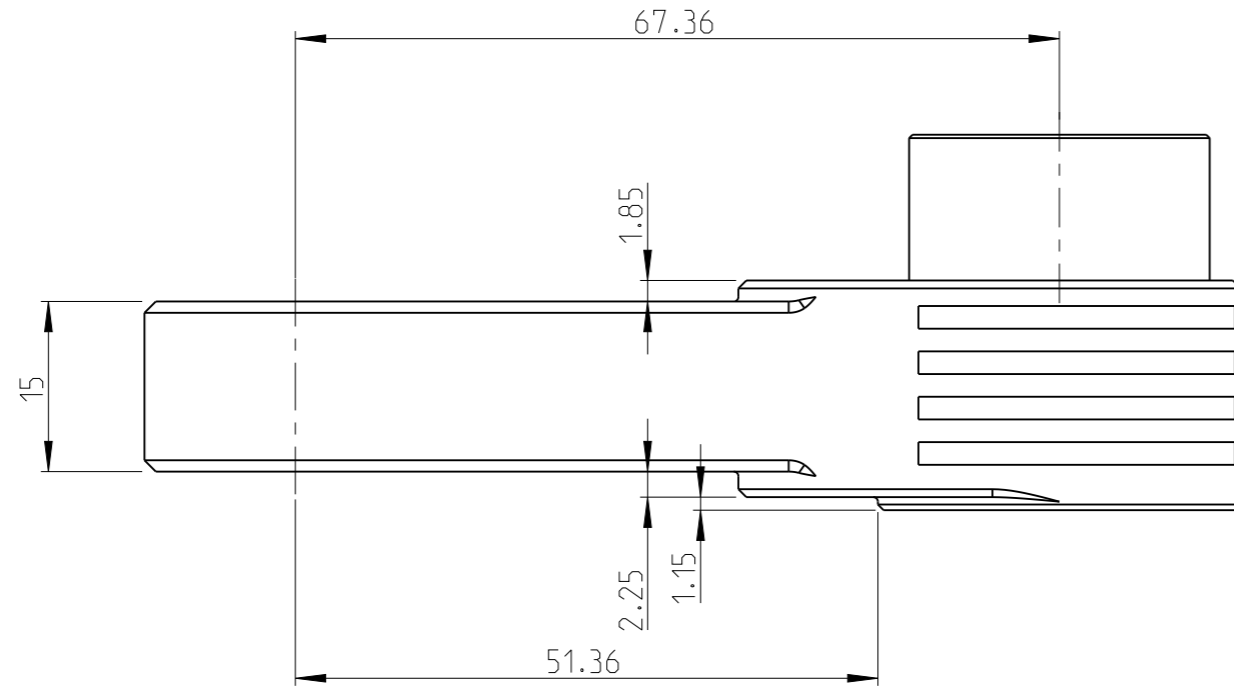


Input size	Square 3/8"
Gear stages	6
Theoretical efficiency	0.68
Gear ratio	1.08
Max output torque	25.00 Nm
Max input torque	34.04 Nm
Approximate weight	0.53 kg
Max hex output size A/F	15 mm

proprietary document. Not to be used in any way without our consent.

<b>SALTUS</b>	Name	GFA-COT-B-41-13-15-6
	Designation	3512150181

PART	GFA-COT-41-NCIP	Status	In Work	Rev. / Iter	0.7
Drawing	GFA-COT-41-NCIP	Status		Rev. / Iter	0.6



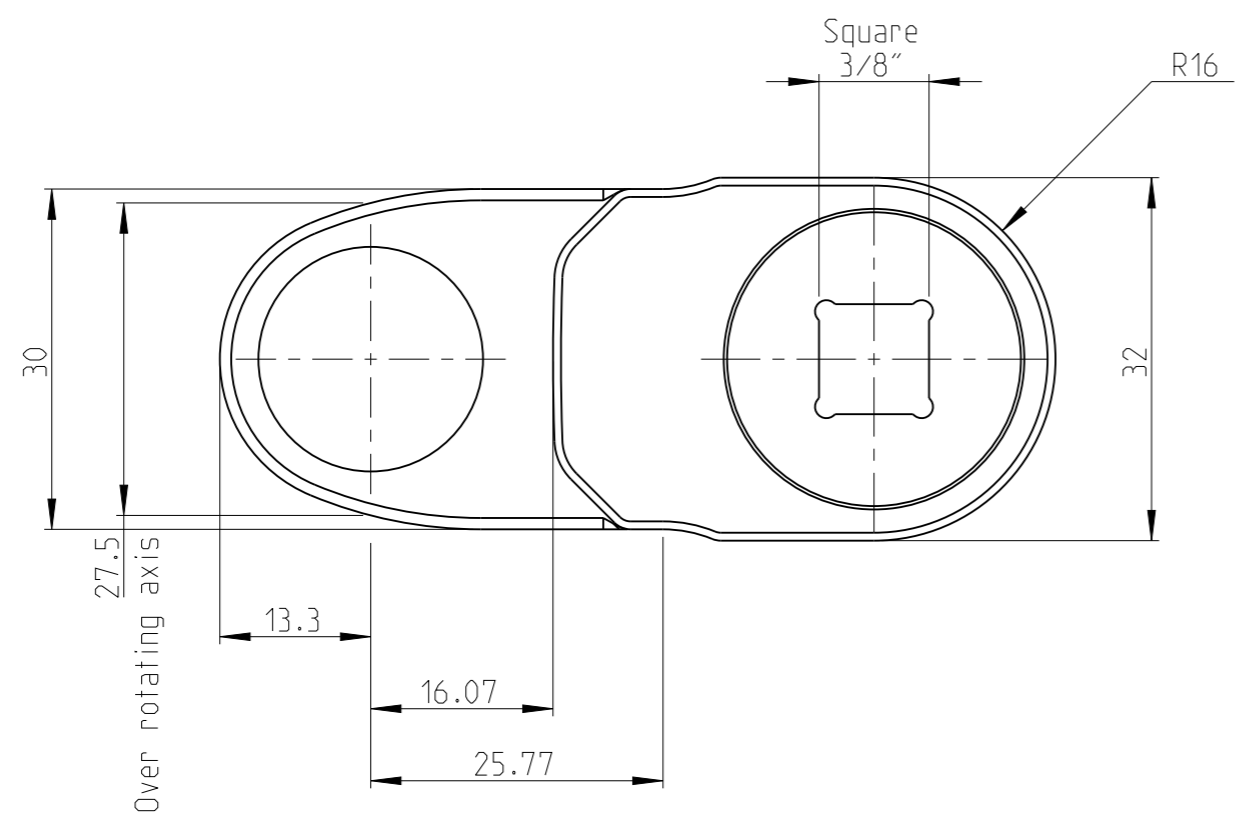
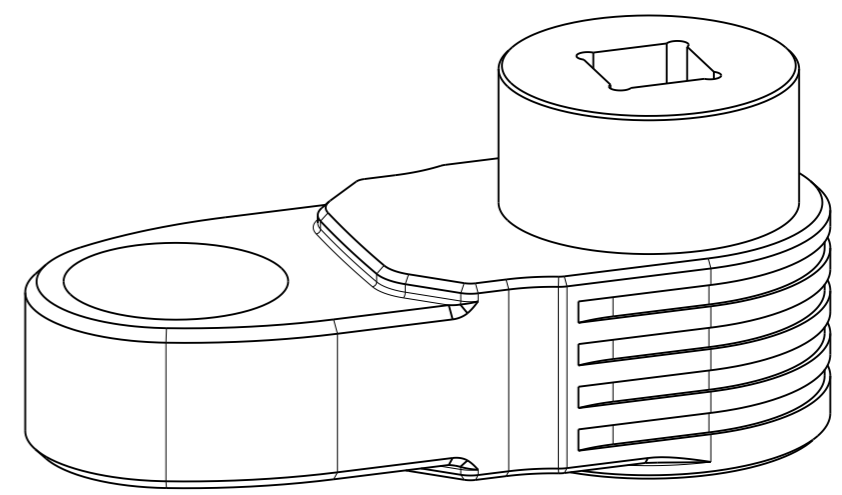
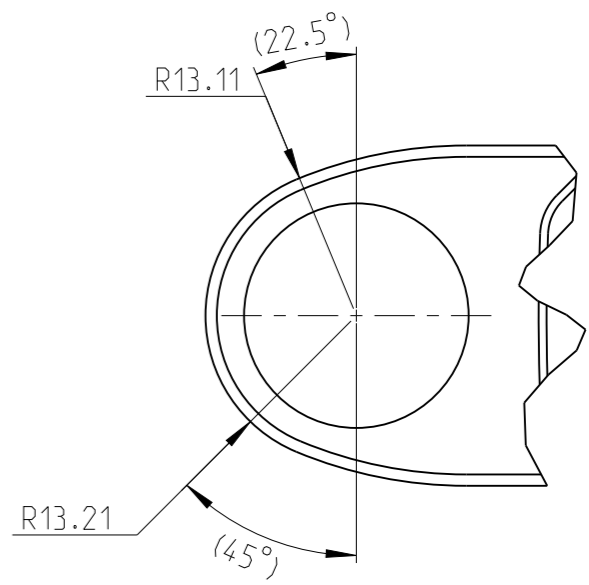
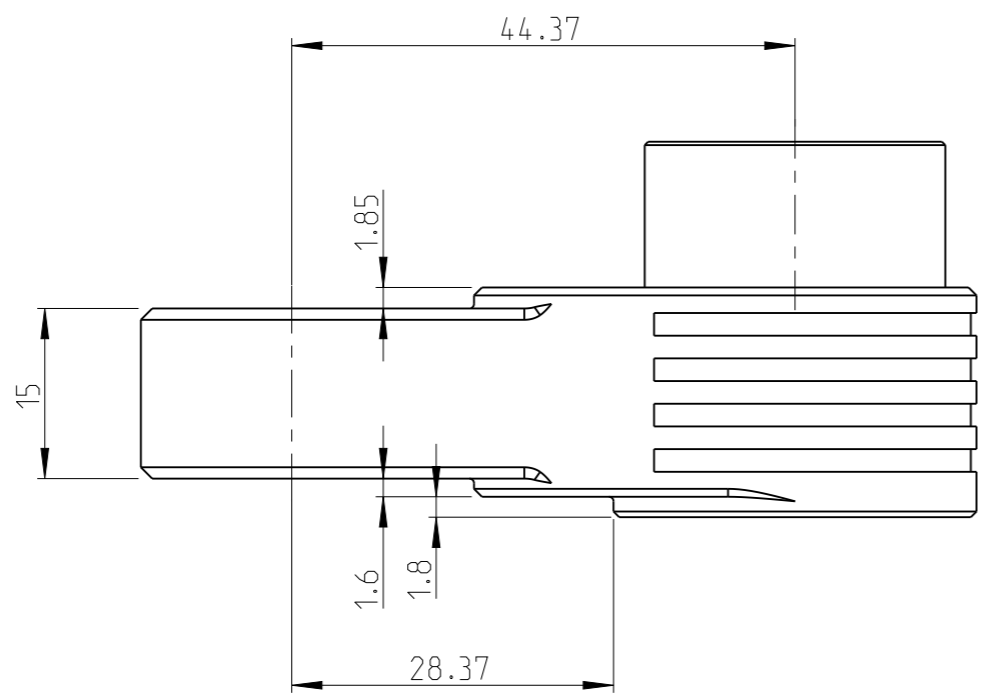
Input size	Square 3/8"
Gear stages	3
Theoretical efficiency	0.80
Gear ratio	1.08
Max output torque	31.00 Nm
Max input torque	35.88 Nm
Approximate weight	0.32 kg
Max hex output size A/F	15 mm

proprietary document. Not to be used in any way without our consent.

**SALTUS**

Name	GFA-COT-B-41-13-15-3
Designation	3512150182

PART	Status	Rev./Iter
GFA-COT-41-NCIP	In Work	0.7
Drawing	Status	Rev./Iter
GFA-COT-41-NCIP		0.6



Input size	Square 3/8"
Gear stages	2
Theoretical efficiency	0.85
Gear ratio	1.08
Max output torque	31.00 Nm
Max input torque	33.77 Nm
Approximate weight	0.25 kg
Max hex output size A/F	15 mm

proprietary document. Not to be used in any way without our consent.

<b>SALTUS</b>	Name	GFA-COT-B-41-13-15-2
	Designation	3512150183