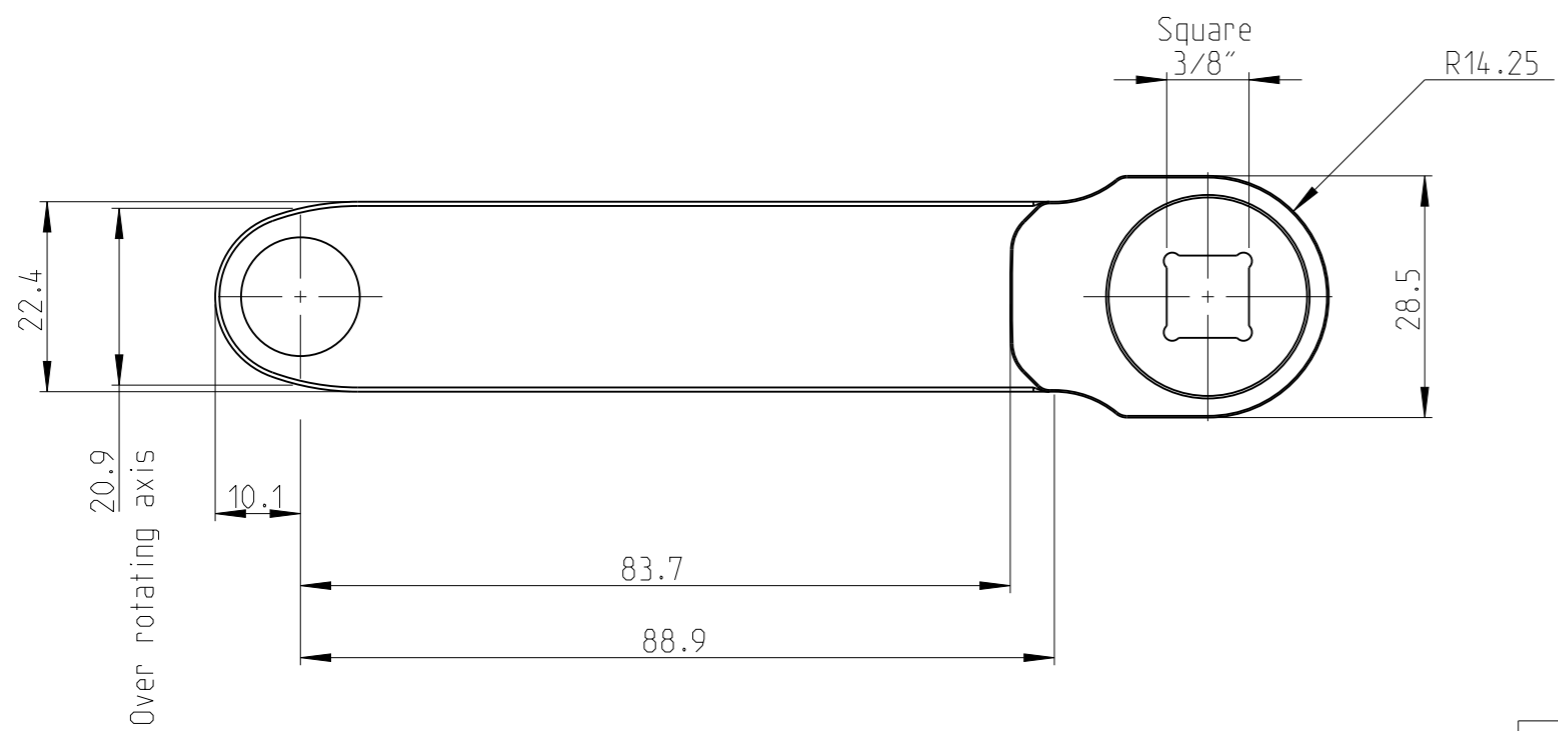
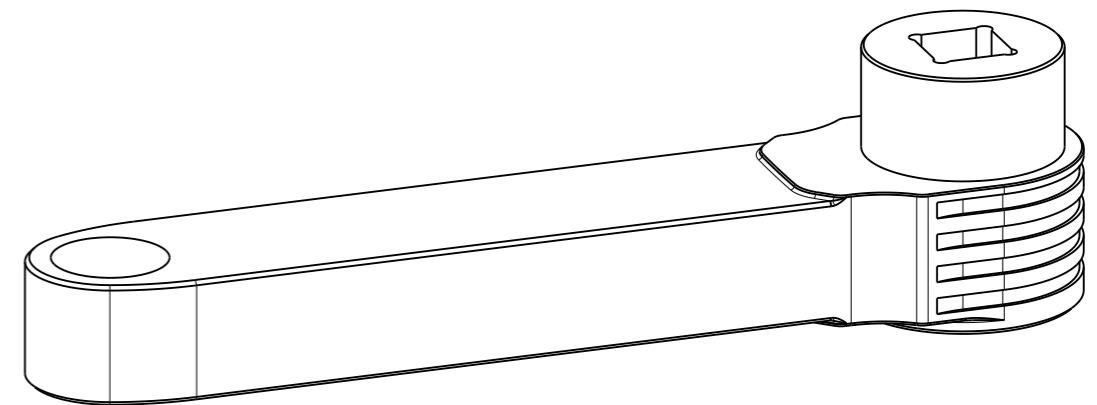
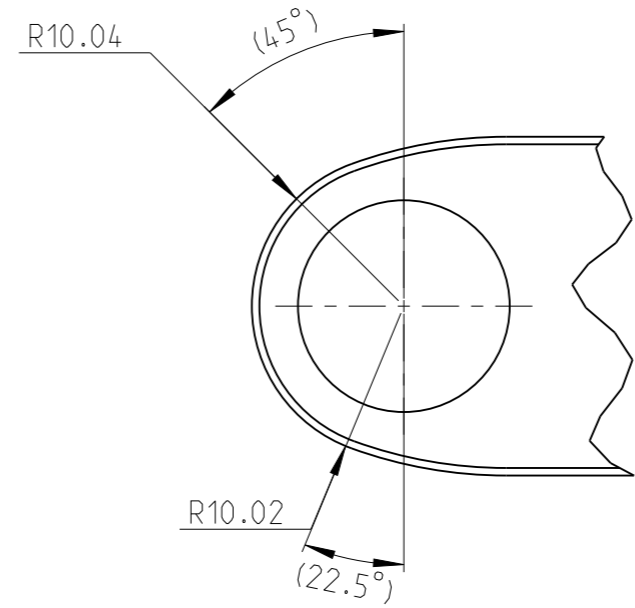
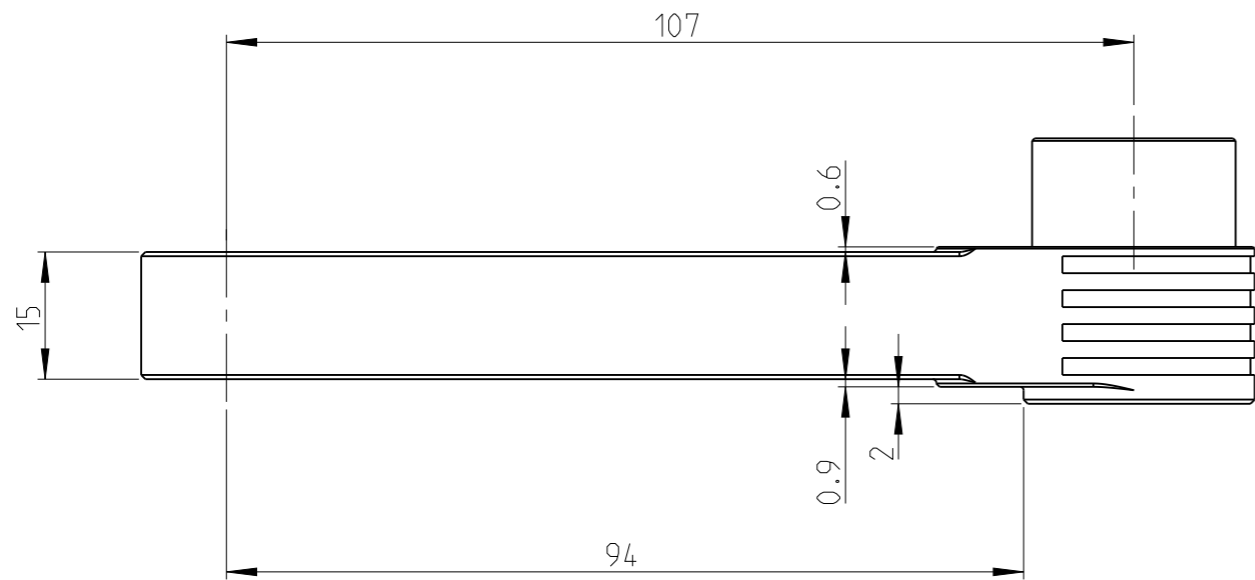


PART	GFA-COT-26-NDIP	Status	In Work	Rev./Iter	0.11
Drawing	GFA-COT-26-NDIP	Status		Rev./Iter	0.11

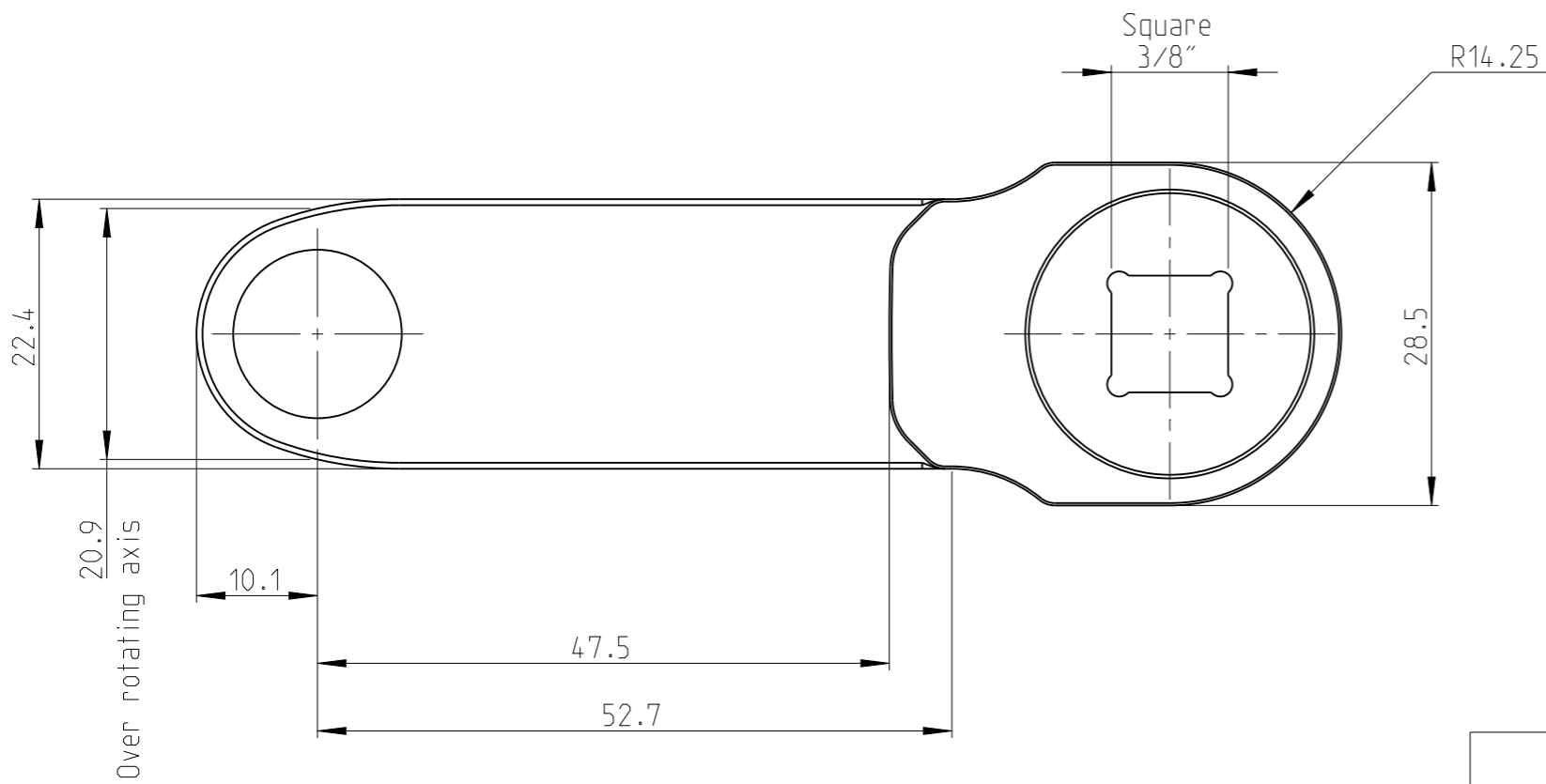
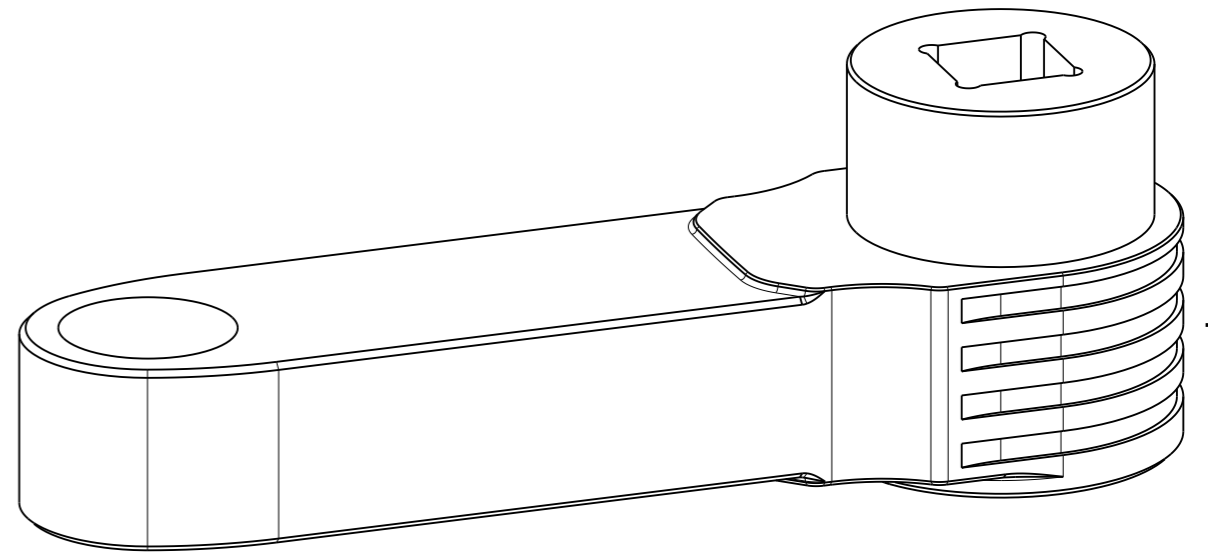
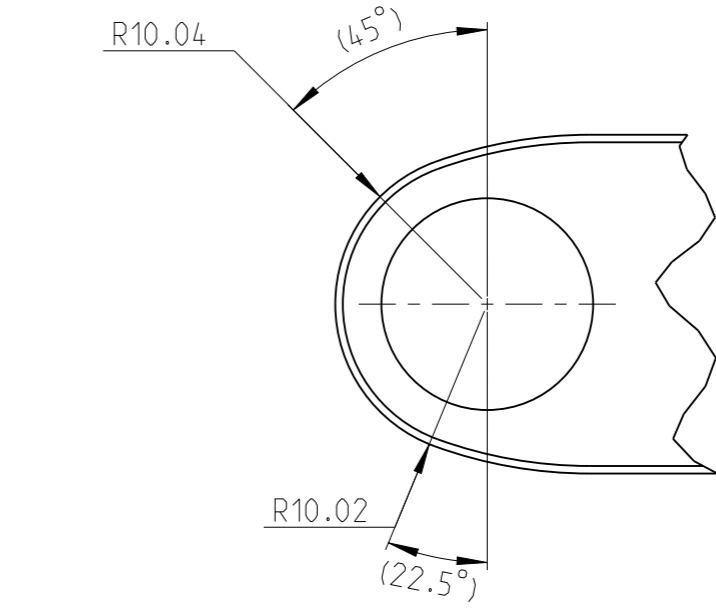
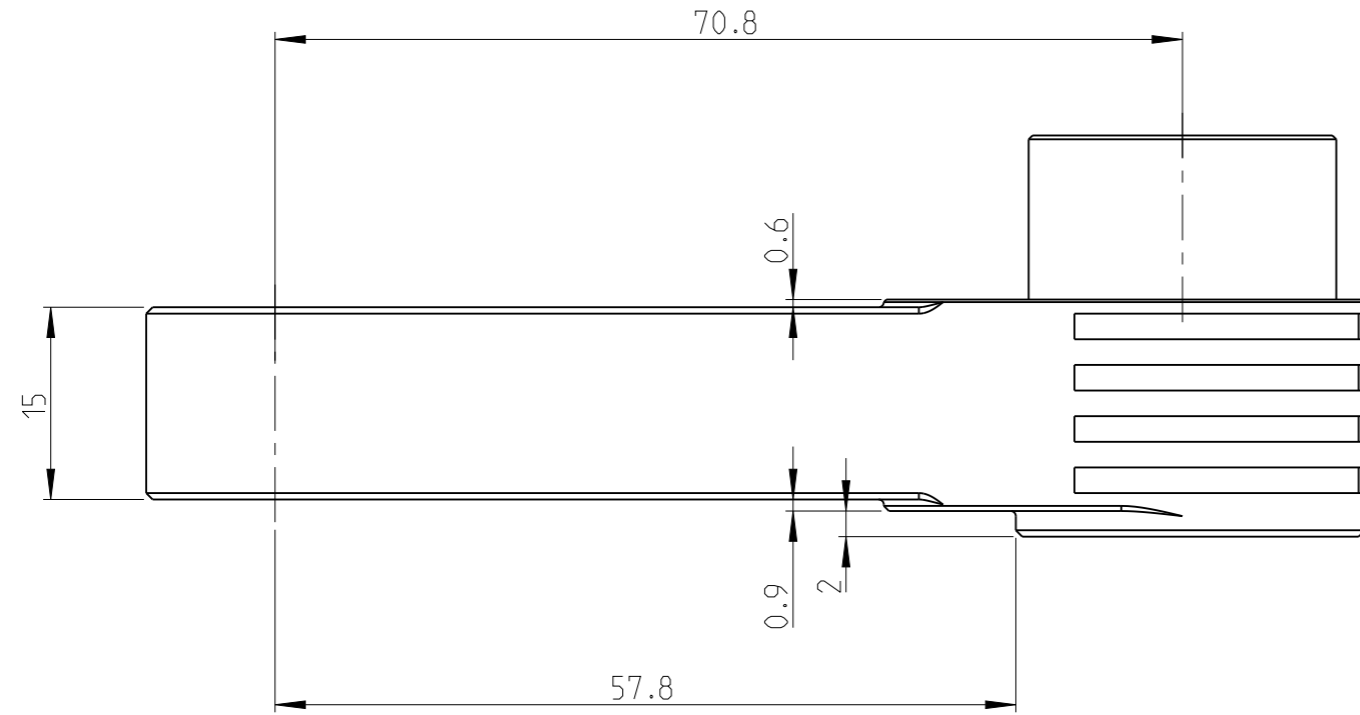


Input size	Square 3/8"
Gear stages	6
Theoretical efficiency	0.68
Gear ratio	1.00
Max output torque	15.60 Nm
Max input torque	22.94 Nm
Approximate weight	0.33 kg
Max hex output size A/F	10 mm

proprietary document. Not to be used in any way without our consent.

<b>SALTUS</b>	Name	GFA-COT-B-26-10-15-6
	Designation	3512150080

PART	GFA-COT-26-NDIP	Status	In Work	Rev./Iter	0.11
Drawing	GFA-COT-26-NDIP	Status		Rev./Iter	0.11



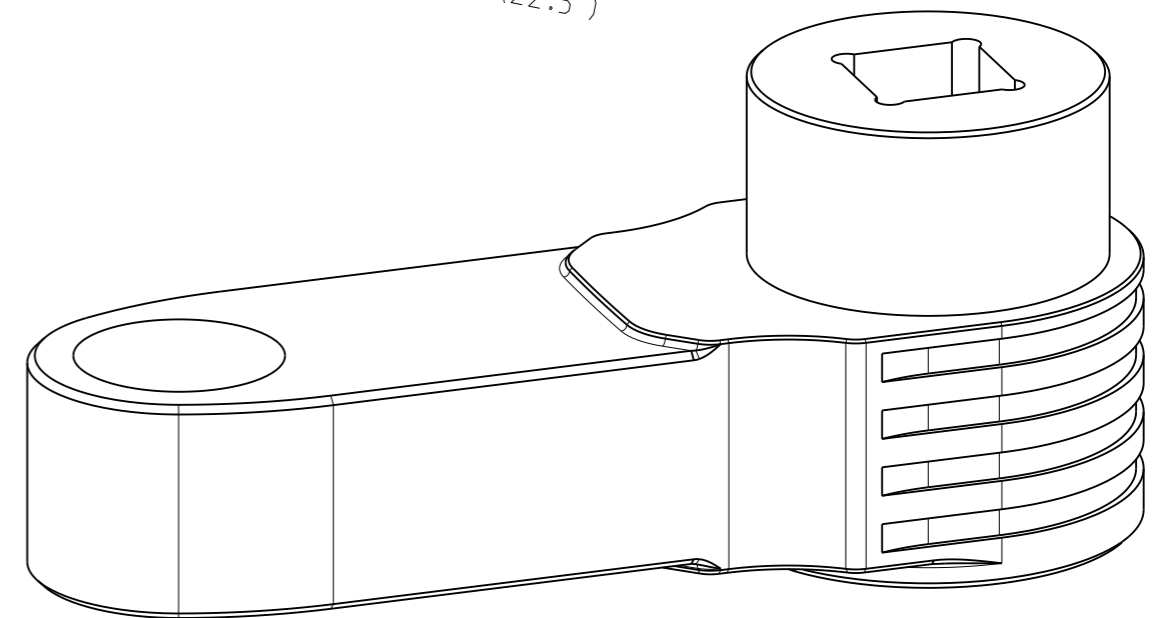
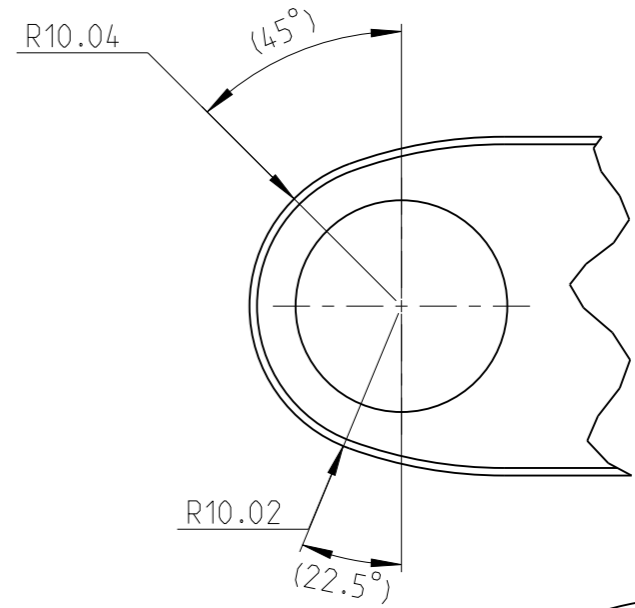
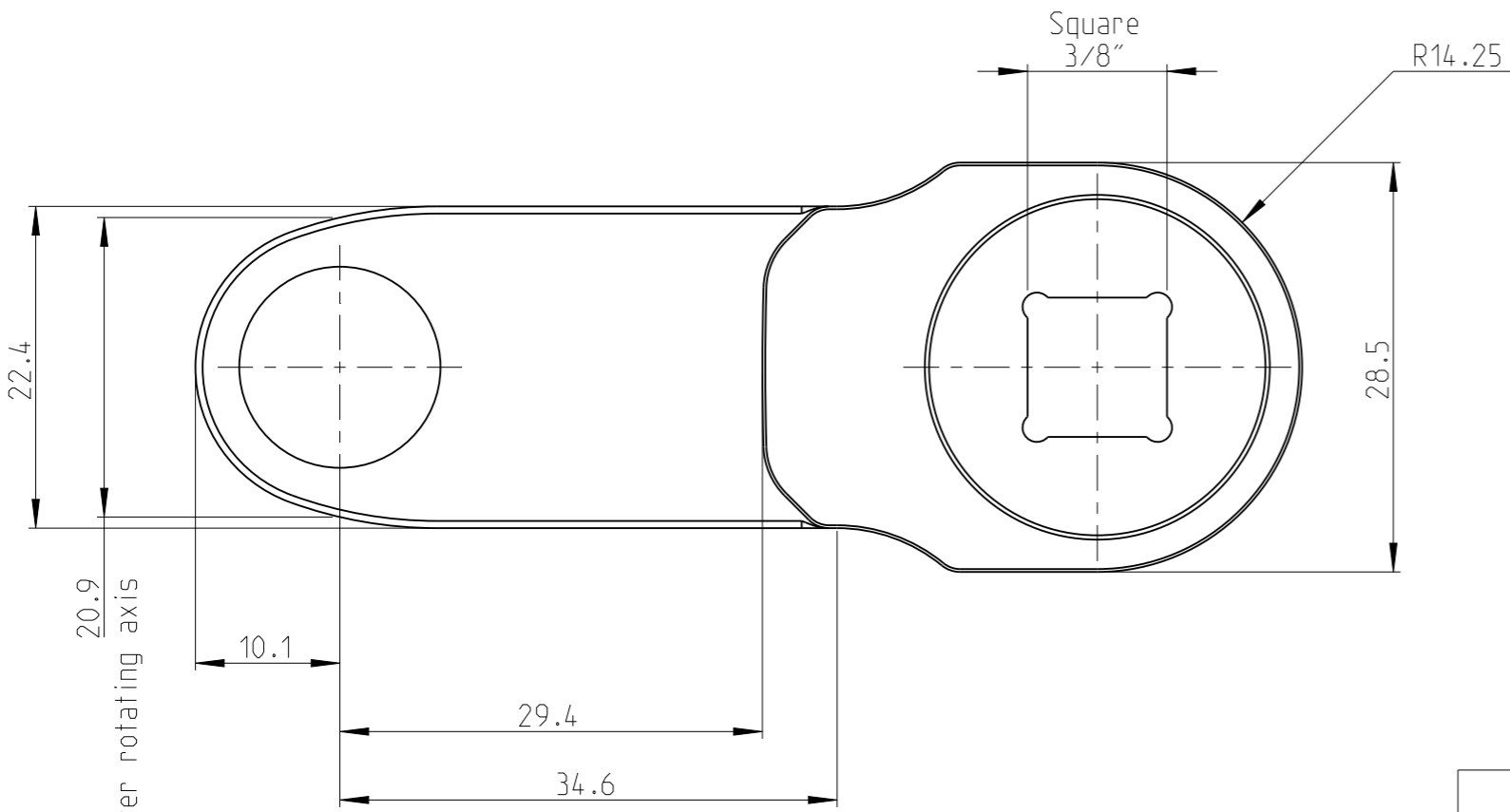
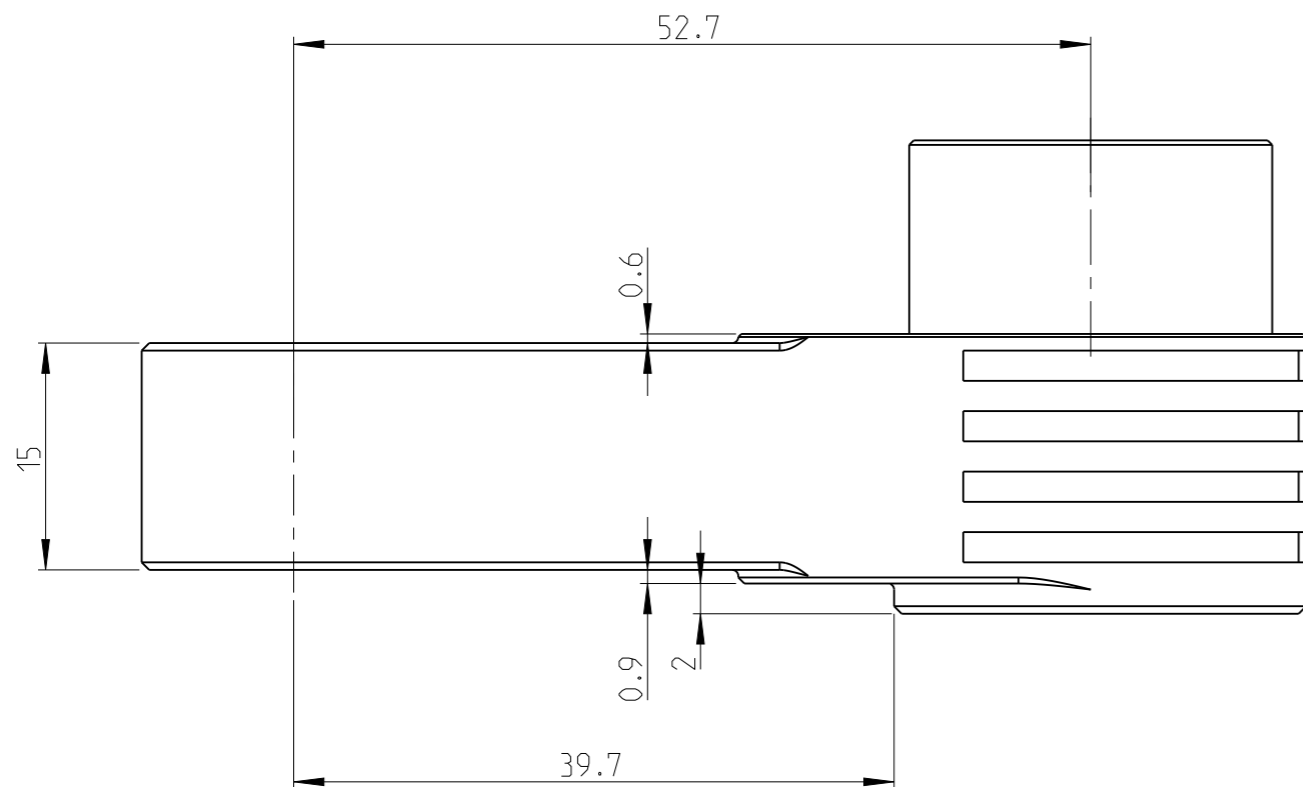
Input size	Square 3/8"
Gear stages	4
Theoretical efficiency	0.75
Gear ratio	1.00
Max output torque	18.00 Nm
Max input torque	24.00 Nm
Approximate weight	0.25 kg
Max hex output size A/F	10 mm

proprietary document. Not to be used in any way without our consent.

**SALTUS**

Name	GFA-COT-B-26-10-15-4
Designation	3512150081

PART	GFA-COT-26-NDIP	Status	In Work	Rev. / Iter	0.11
Drawing	GFA-COT-26-NDIP	Status		Rev. / Iter	0.11

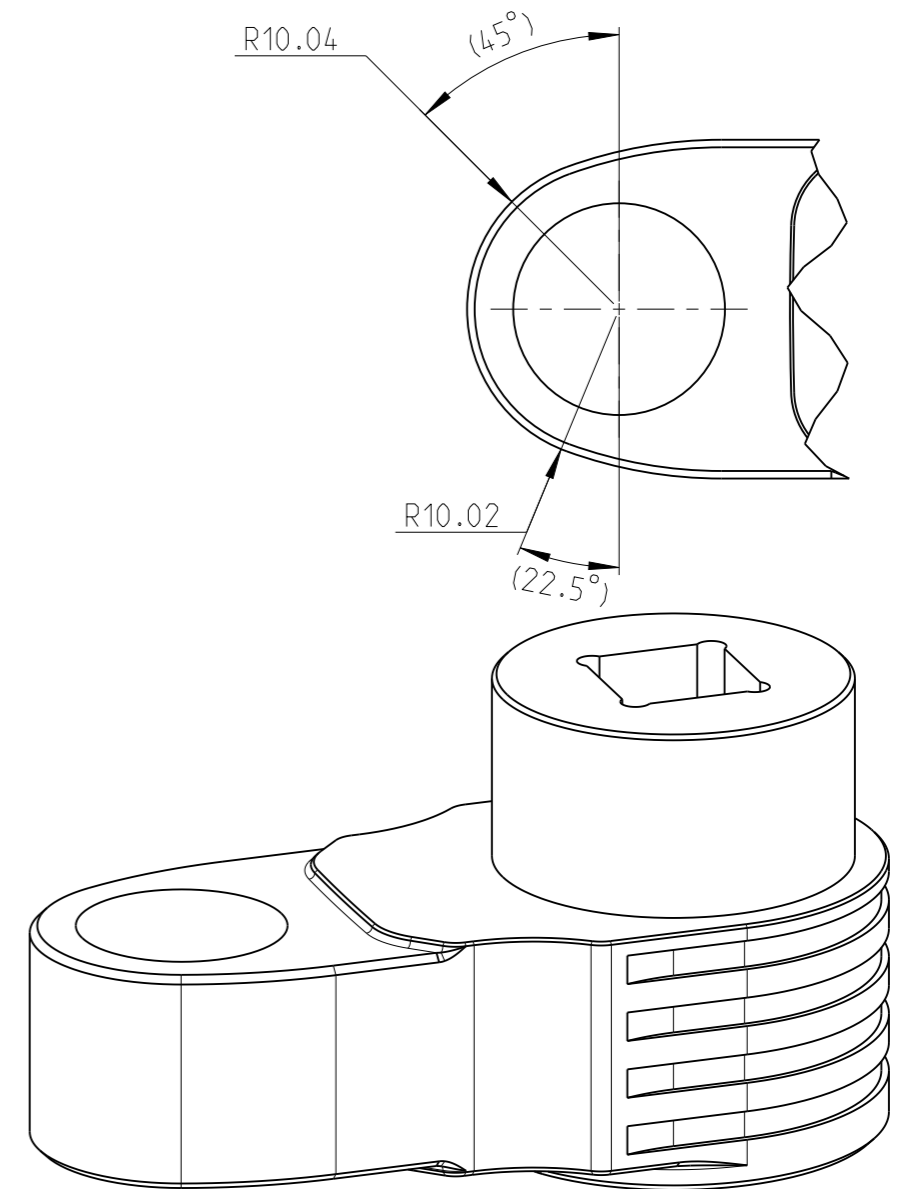
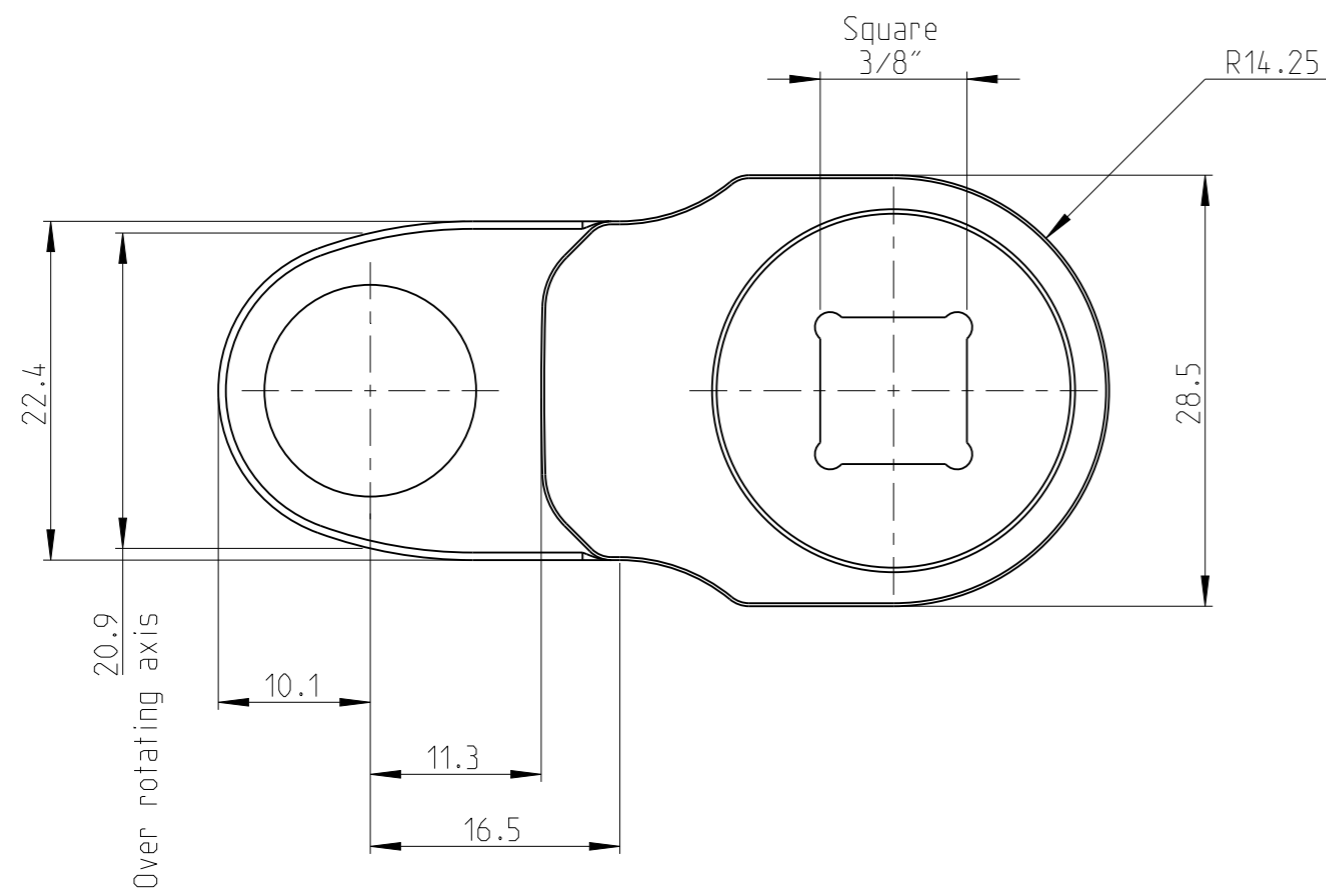
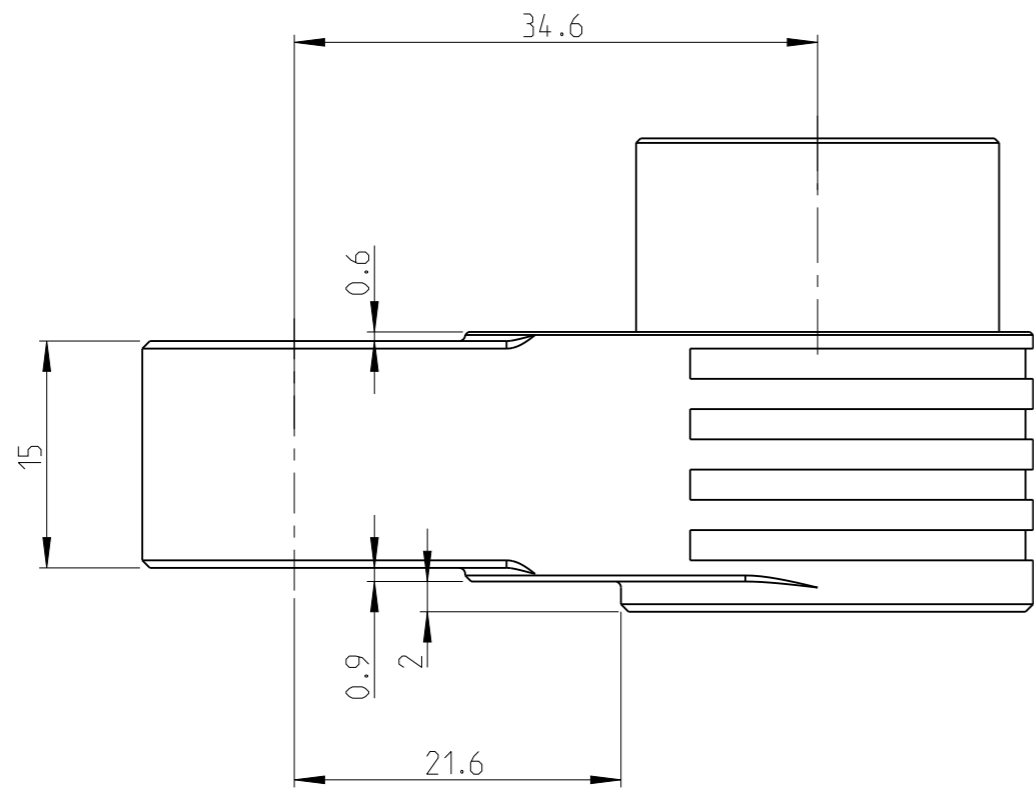


Input size	Square 3/8"
Gear stages	3
Theoretical efficiency	0.80
Gear ratio	1.00
Max output torque	18.00 Nm
Max input torque	22.50 Nm
Approximate weight	0.21 kg
Max hex output size A/F	10 mm

proprietary document. Not to be used in any way without our consent.

<b>SALTUS</b>	Name	GFA-COT-B-26-10-15-3
	Designation	3512150082

PART	GFA-COT-26-NDIP	Status	In Work	Rev. / Iter	0.11
Drawing	GFA-COT-26-NDIP	Status		Rev. / Iter	0.11



Input size	Square 3/8"
Gear stages	2
Theoretical efficiency	0.85
Gear ratio	1.00
Max output torque	18.00 Nm
Max input torque	21.18 Nm
Approximate weight	0.17 kg
Max hex output size A/F	10 mm

**SALTUS**

Name	GFA-COT-B-26-10-15-2
Designation	3512150084

proprietary document. Not to be used in any way without our consent.