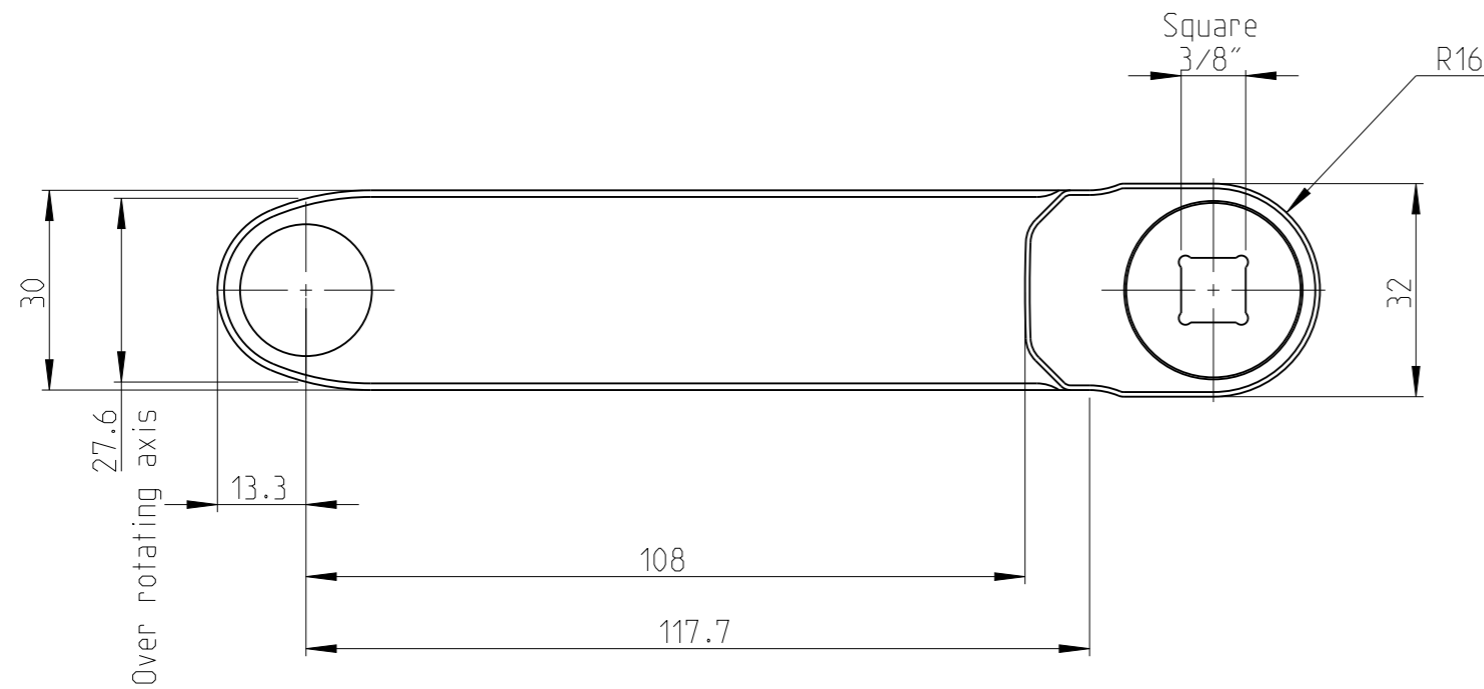
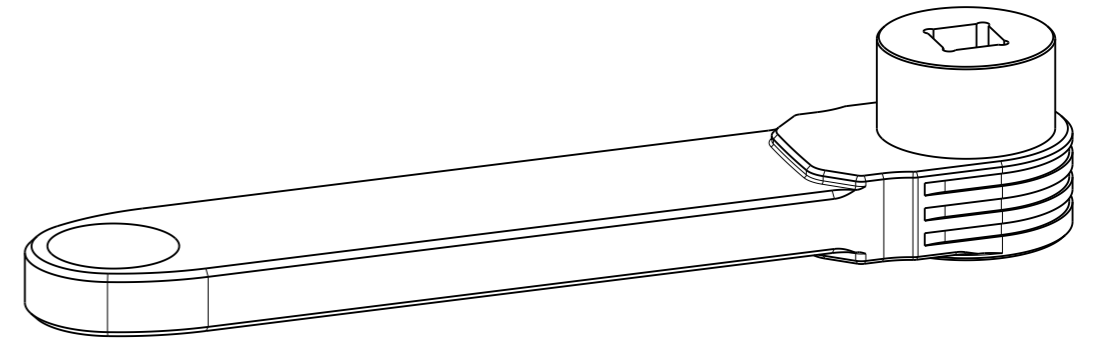
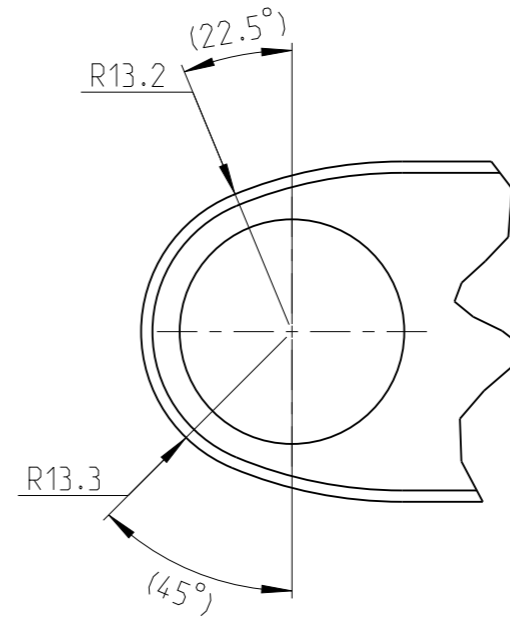
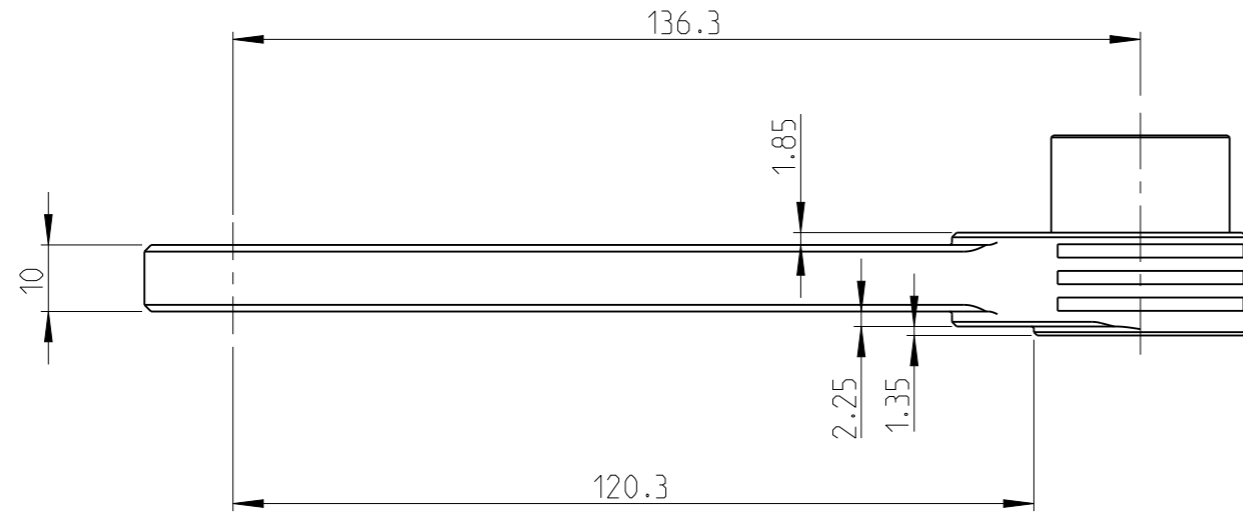


PART	Status	Rev./Iter
GFA-COT-26-13-10_N01P	In Work	0.0
Drawing	Status	Rev./Iter
GFA-COT-26-13-10_N01P		0.0



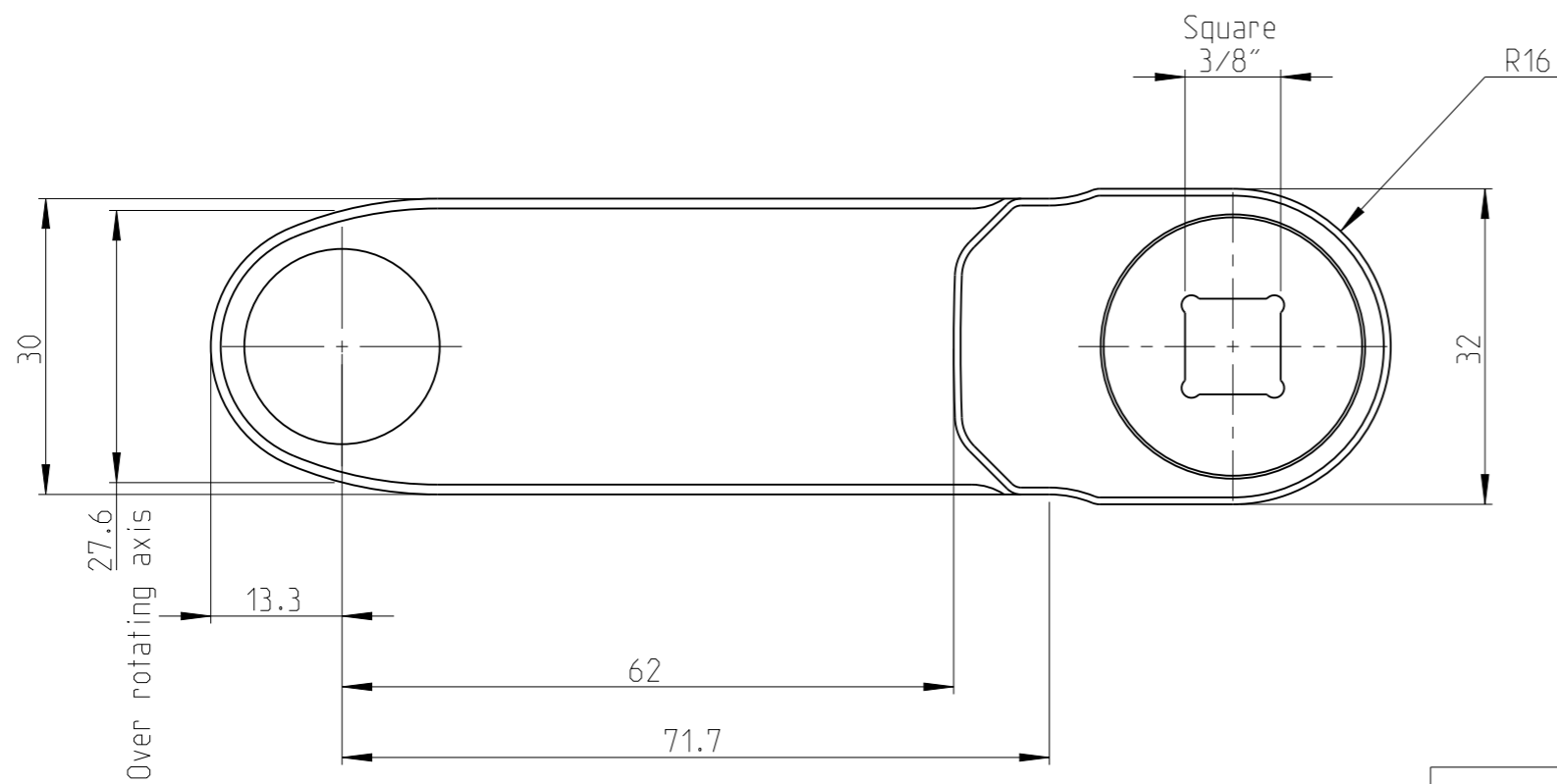
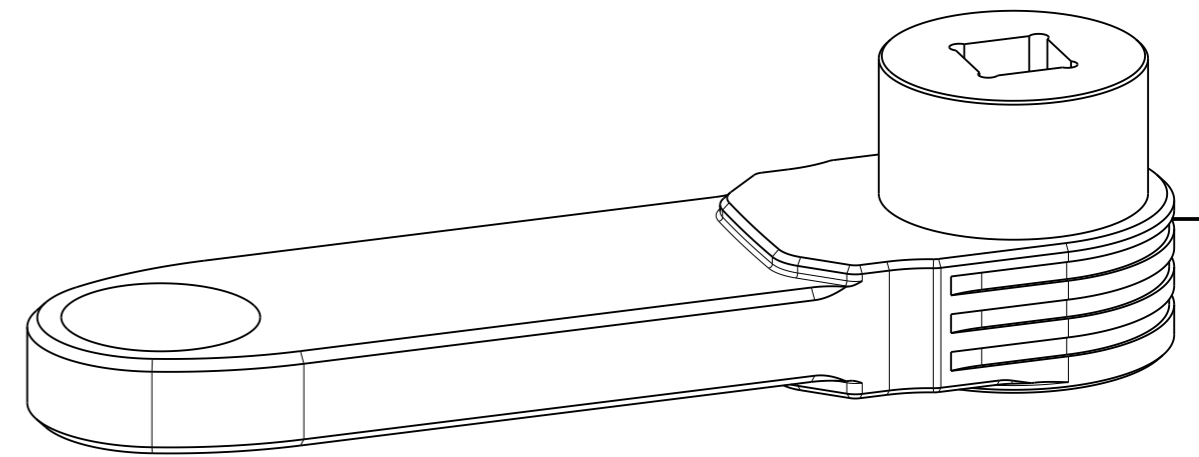
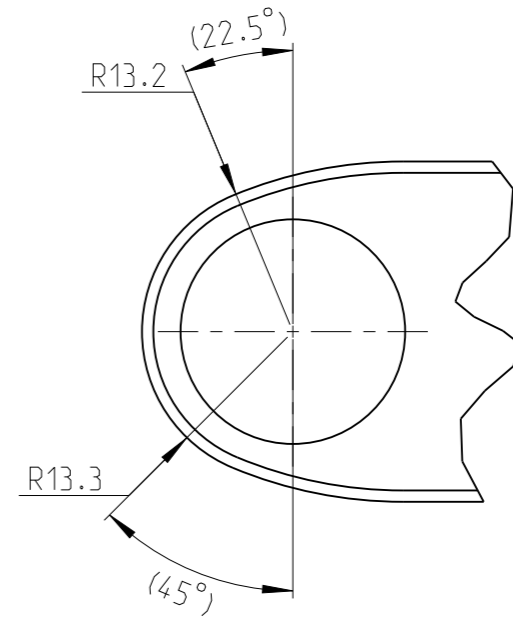
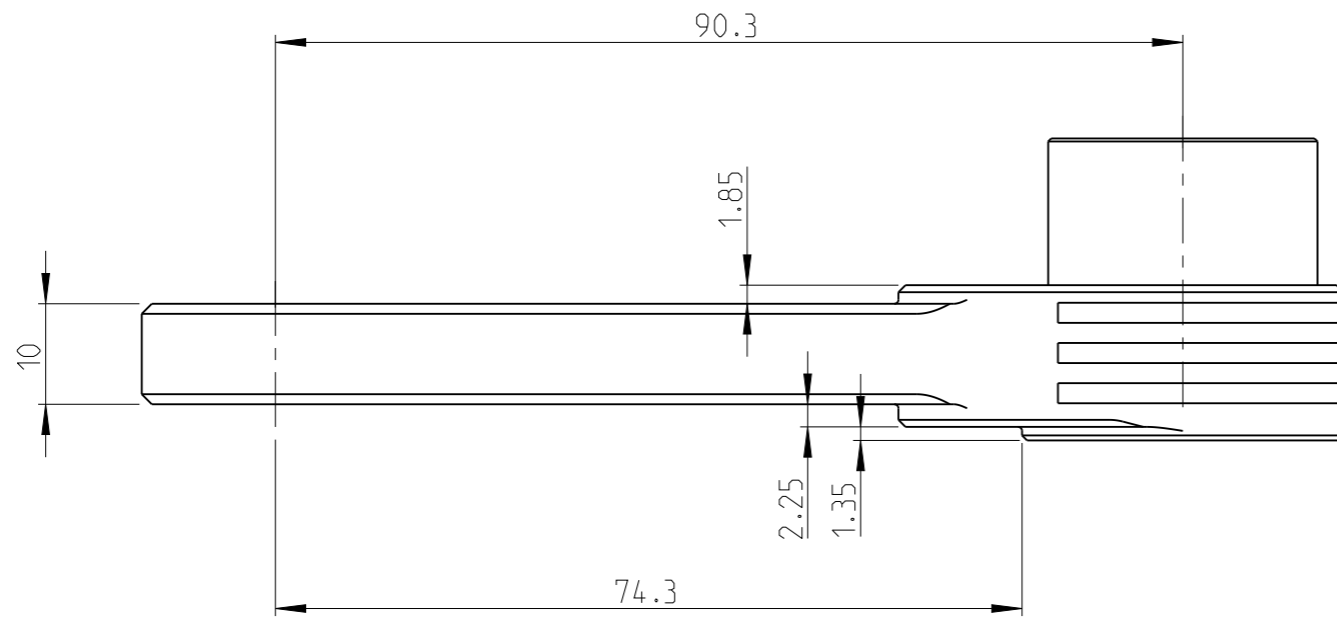
Input size	Square 3/8"
Gear stages	6
Theoretical efficiency	0.68
Gear ratio	1.08
Max output torque	15.60 Nm
Max input torque	21.30 Nm
Approximate weight	0.38 kg
Max hex output size A/F	15 mm

proprietary document. Not to be used in any way without our consent.

SALTUS

Name	GFA-COT-B-26-13-10-6
Designation	3512150085

PART	Status	Rev./Iter
GFA-COT-26-13-10_N01P	In Work	0.0
Drawing	Status	Rev./Iter
GFA-COT-26-13-10_N01P		0.0



Input size	Square 3/8"
Gear stages	4
Theoretical efficiency	0.75
Gear ratio	1.08
Max output torque	18.00 Nm
Max input torque	22.30 Nm
Approximate weight	0.29 kg
Max hex output size A/F	15 mm

SALTUS	Name	GFA-COT-B-26-13-10-4
	Designation	3512150086

proprietary document. Not to be used in any way without our consent.