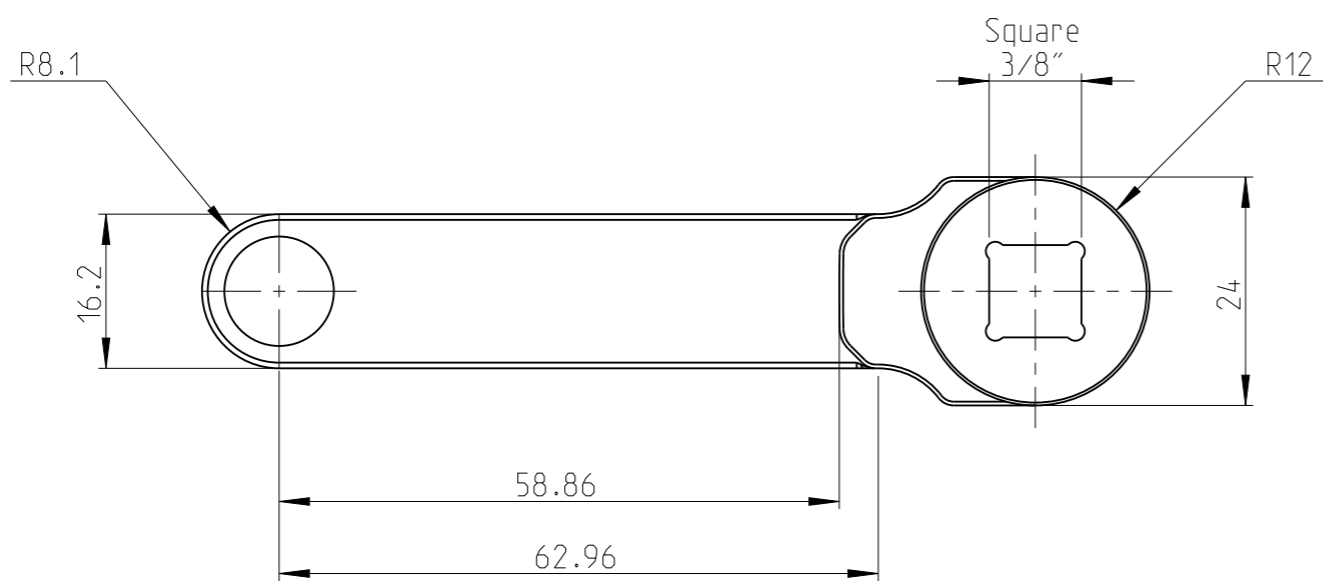
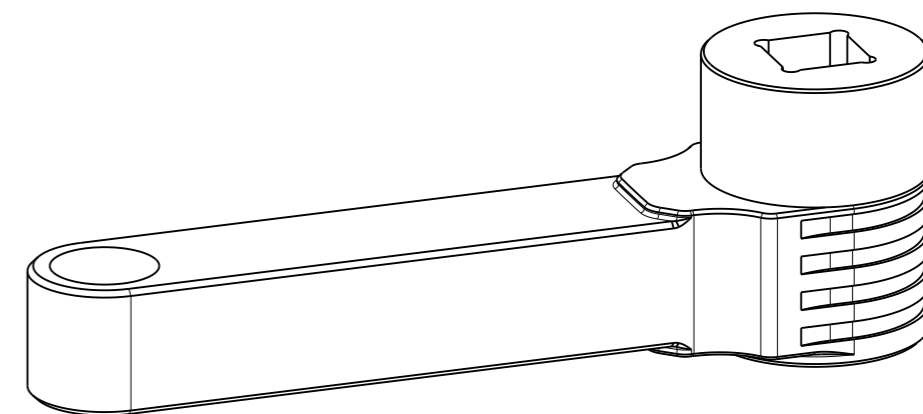
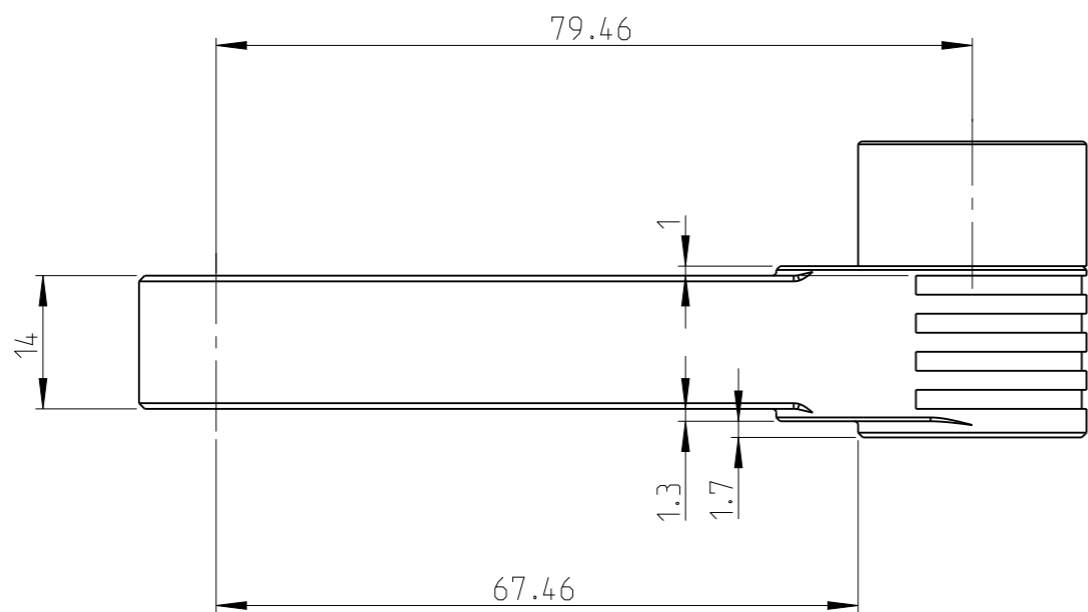


PART	Status	Rev./Iter
GFA-COT-14-NCIP	In Work	0.6
Drawing	Status	Rev./Iter
GFA-COT-14-NCIP		0.5



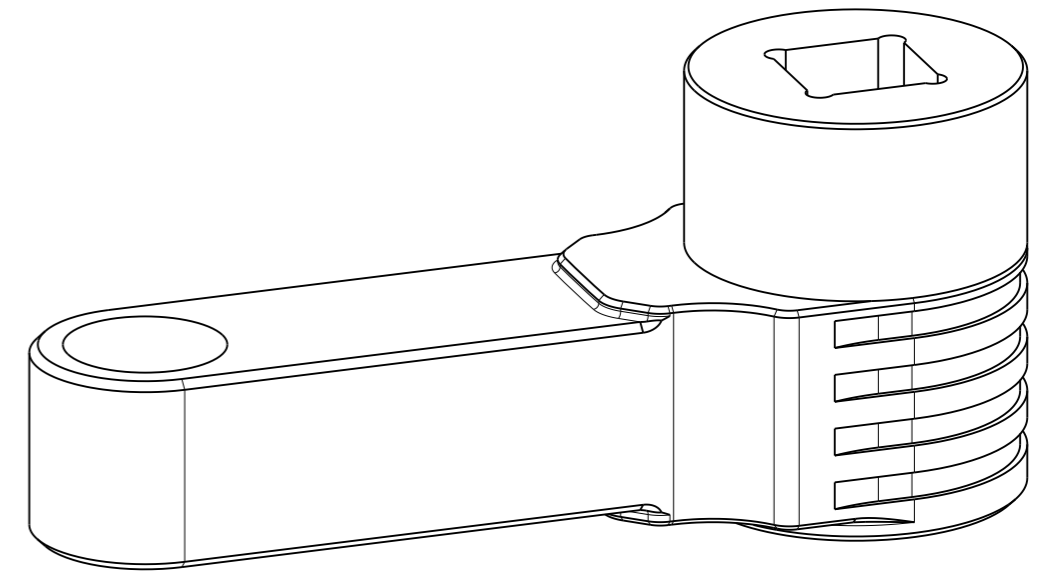
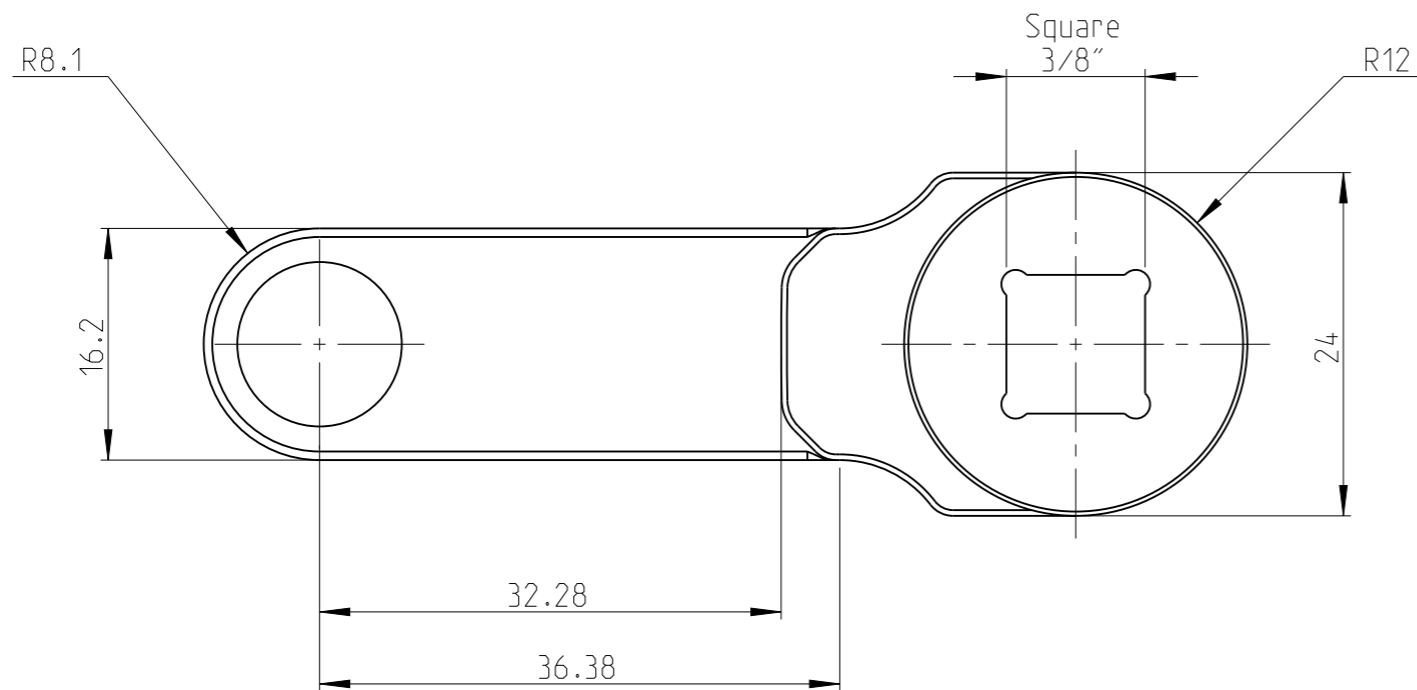
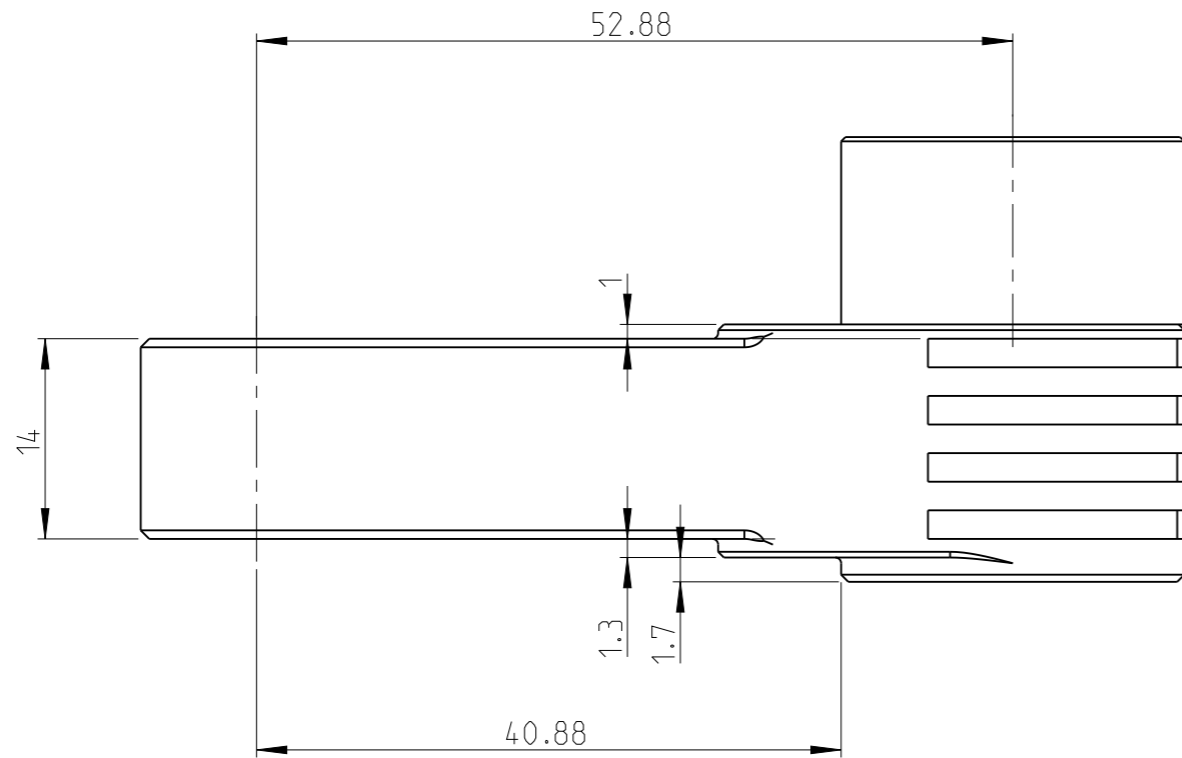
Input size	Square 3/8"
Gear stages	6
Theoretical efficiency	0.68
Gear ratio	1.00
Max output torque	8.10 Nm
Max input torque	11.91 Nm
Approximate weight	0.2 kg
Max hex output size A/F	8 mm

proprietary document. Not to be used in any way without our consent.

**SALTUS**

Name	GFA-COT-B-14-08-14-6
Designation	3512130080

PART	GFA-COT-14-NCIP	Status	In Work	Rev./Iter	0.6
Drawing	GFA-COT-14-NCIP	Status		Rev./Iter	0.5



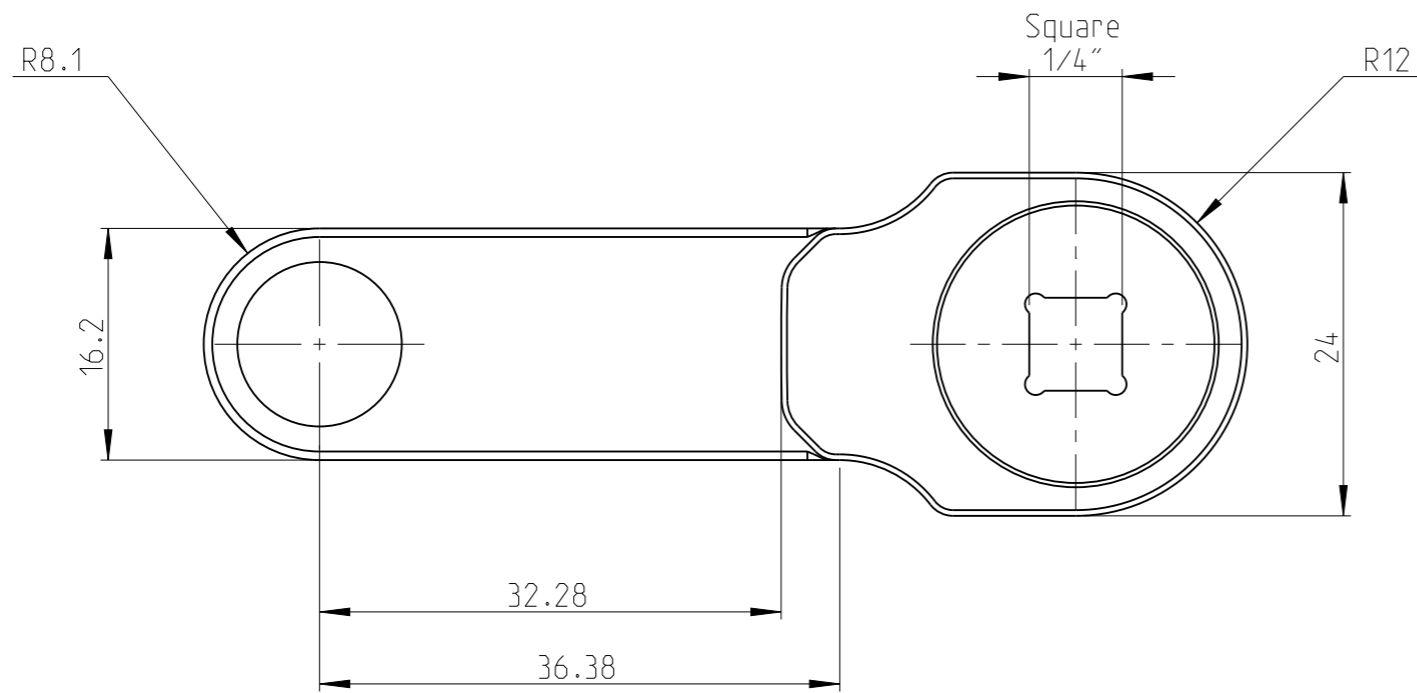
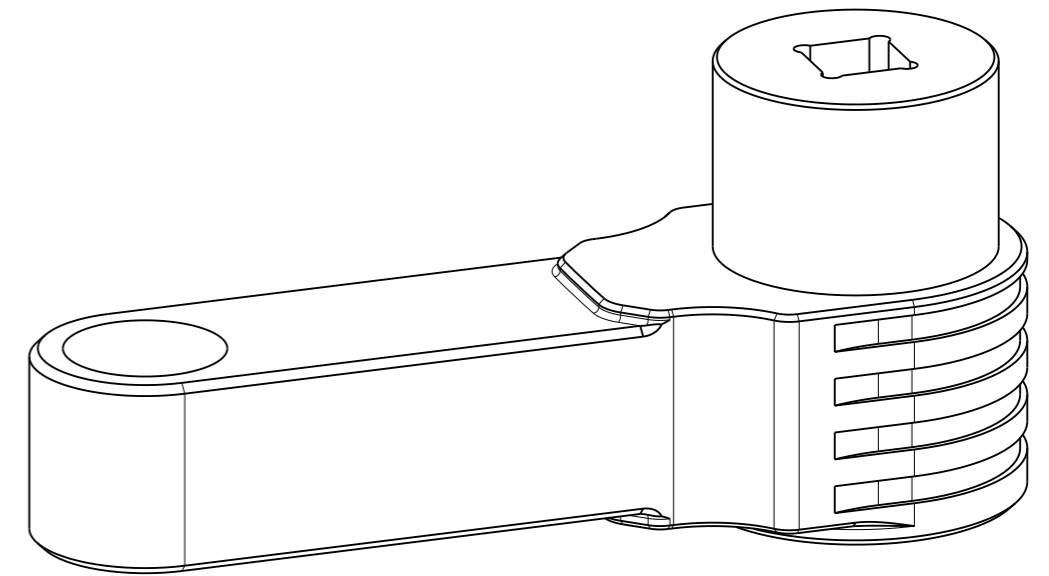
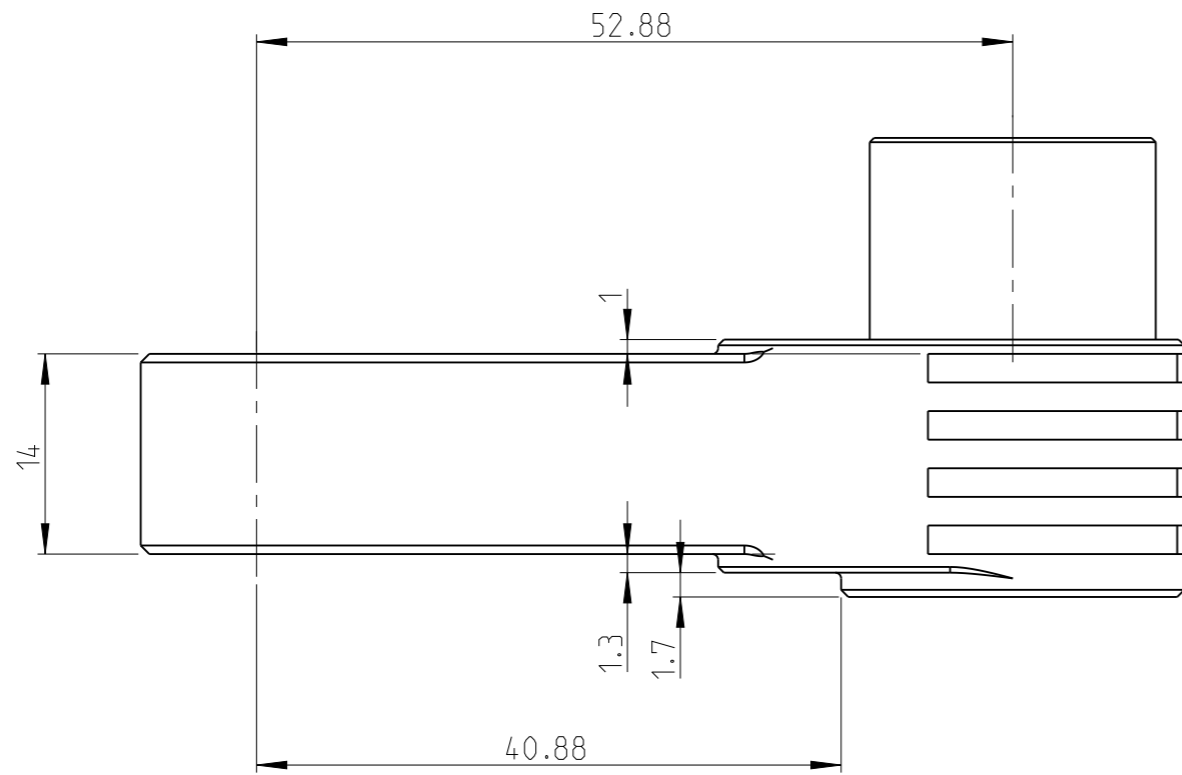
Input size	Square 3/8"
Gear stages	4
Theoretical efficiency	0.75
Gear ratio	1.00
Max output torque	9.50 Nm
Max input torque	12.67 Nm
Approximate weight	0.16 kg
Max hex output size A/F	8 mm

proprietary document. Not to be used in any way without our consent.

**SALTUS**

Name	GFA-COT-B-14-08-14-4
Designation	3512130081

PART	GFA-COT-14-NCIP	Status	In Work	Rev./Iter	0.6
Drawing	GFA-COT-14-NCIP	Status		Rev./Iter	0.5



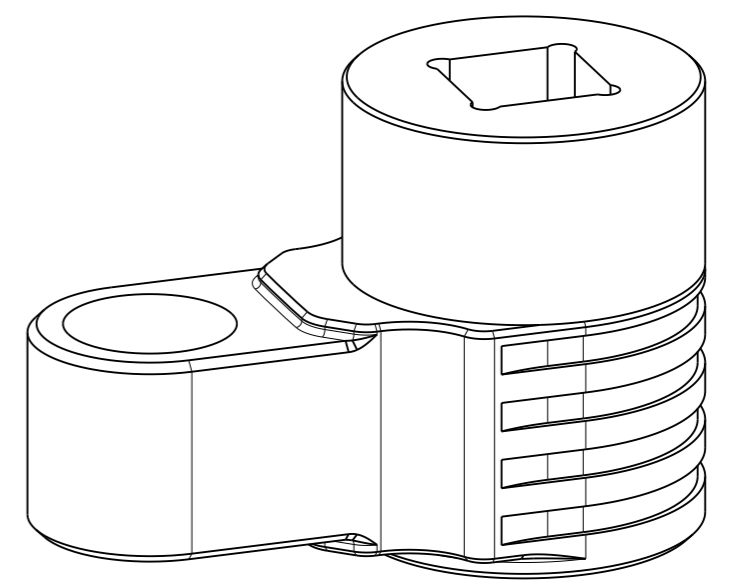
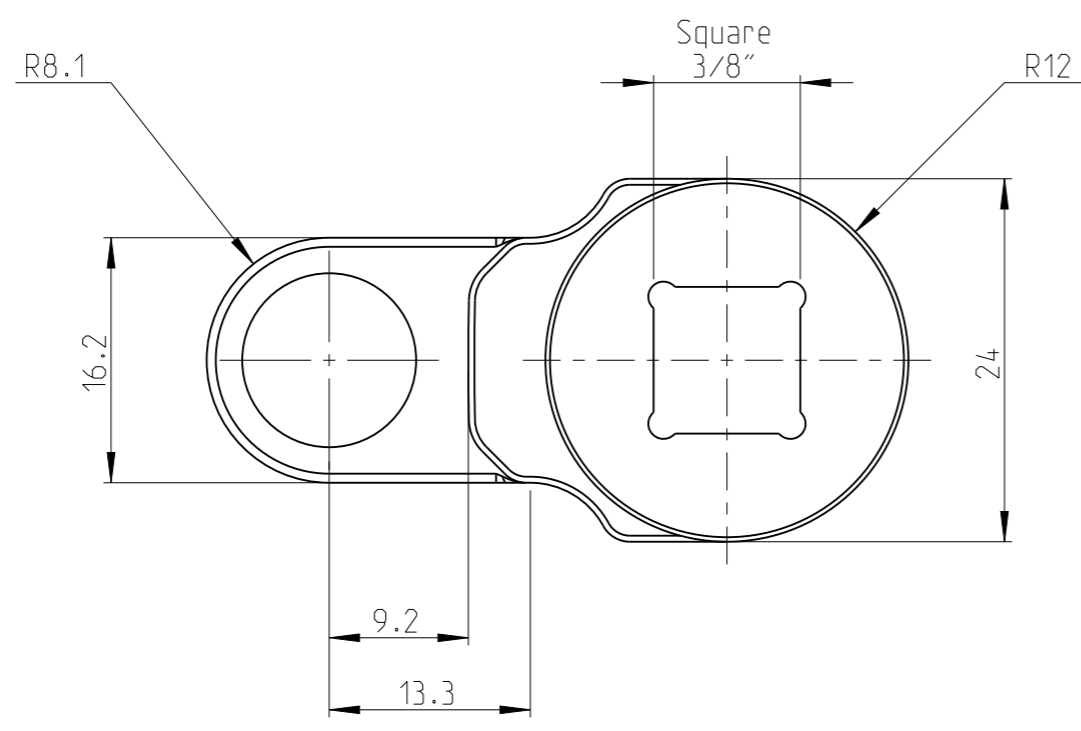
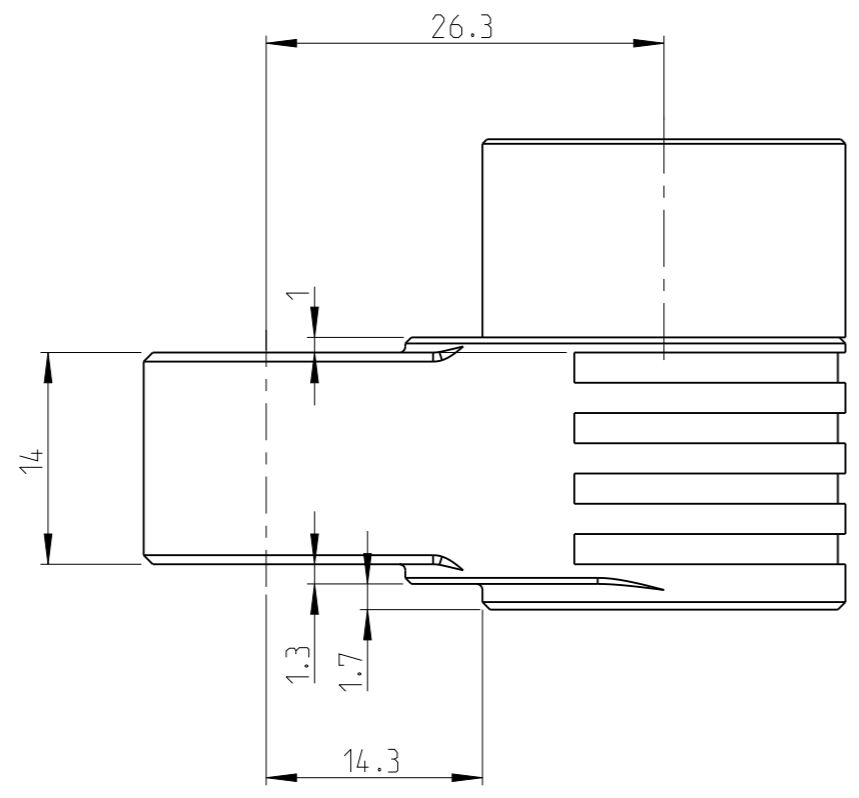
Input size	Square 1/4"
Gear stages	4
Theoretical efficiency	0.75
Gear ratio	1.00
Max output torque	9.50 Nm
Max input torque	12.67 Nm
Approximate weight	0.15 kg
Max hex output size A/F	8 mm

proprietary document. Not to be used in any way without our consent.

**SALTUS**

Name	GFA-COT-A-14-08-14-4
Designation	3512130082

PART	GFA-COT-14-NCIP	Status	In Work	Rev.1ter	0.6
Drawing	GFA-COT-14-NCIP	Status		Rev.1ter	0.5

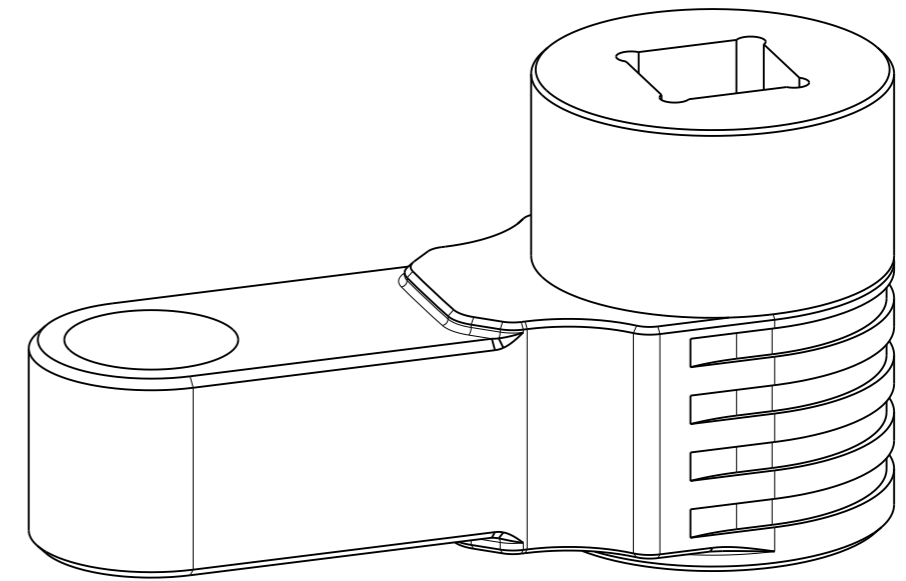
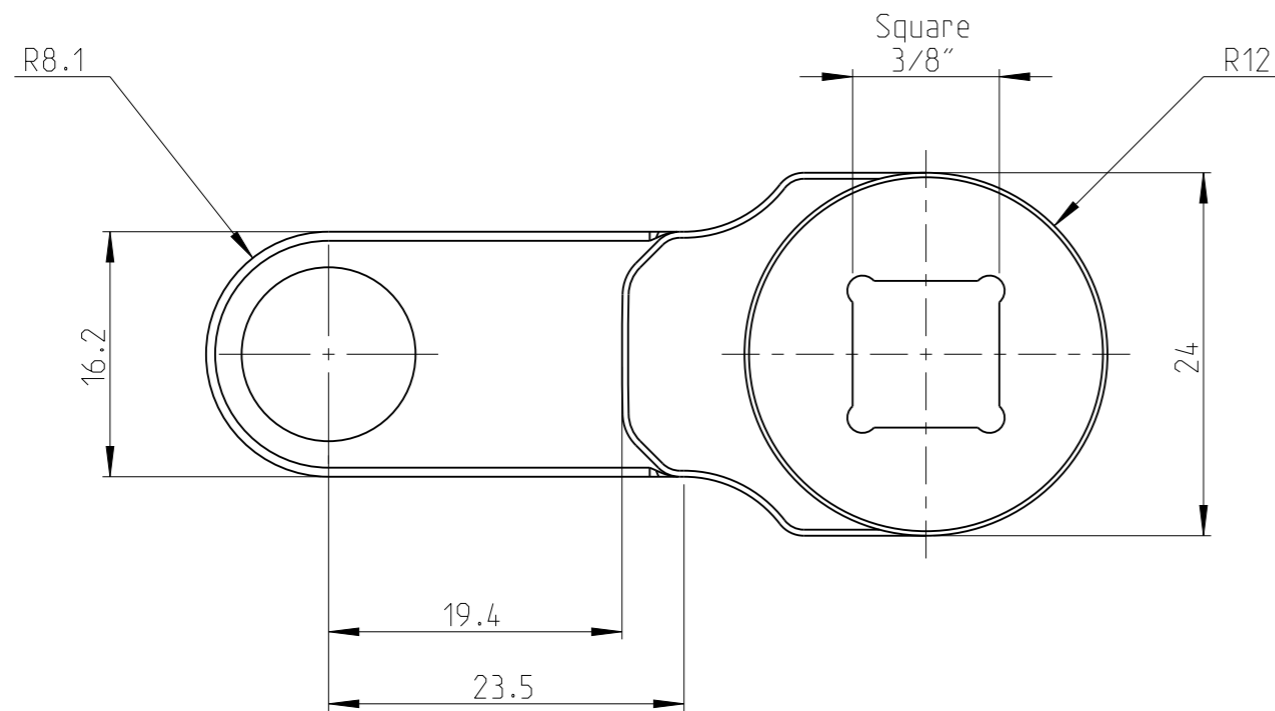
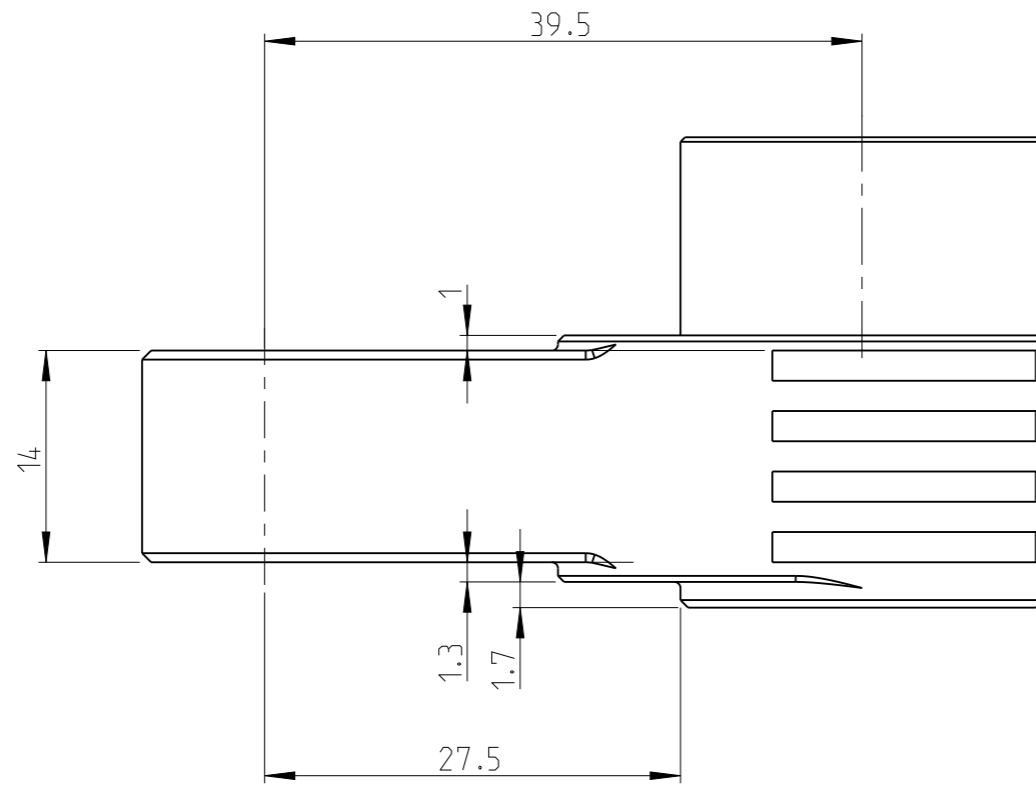


Input size	Square 3/8"
Gear stages	2
Theoretical efficiency	0.85
Gear ratio	1.00
Max output torque	9.50 Nm
Max input torque	11.18 Nm
Approximate weight	0.12 kg
Max hex output size A/F	8 mm

proprietary document. Not to be used in any way without our consent.

<b>SALTUS</b>	Name	GFA-COT-B-14-08-14-2
	Designation	3512130083

PART	GFA-COT-14-NCIP	Status	In Work	Rev./Iter	0.6
Drawing	GFA-COT-14-NCIP	Status		Rev./Iter	0.5



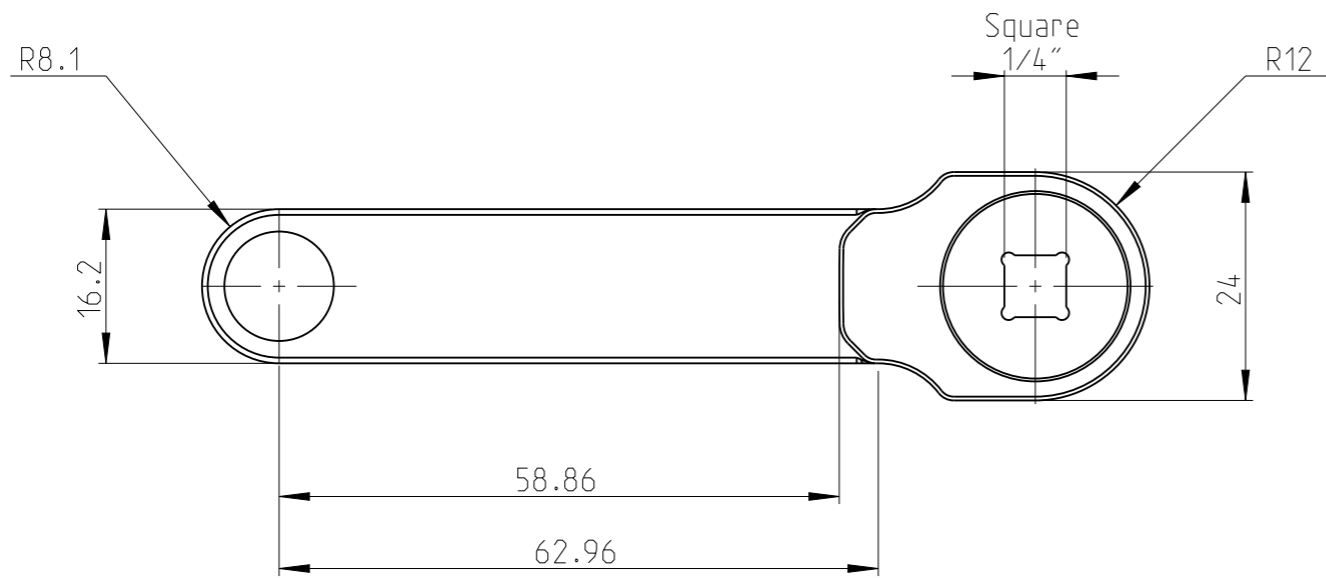
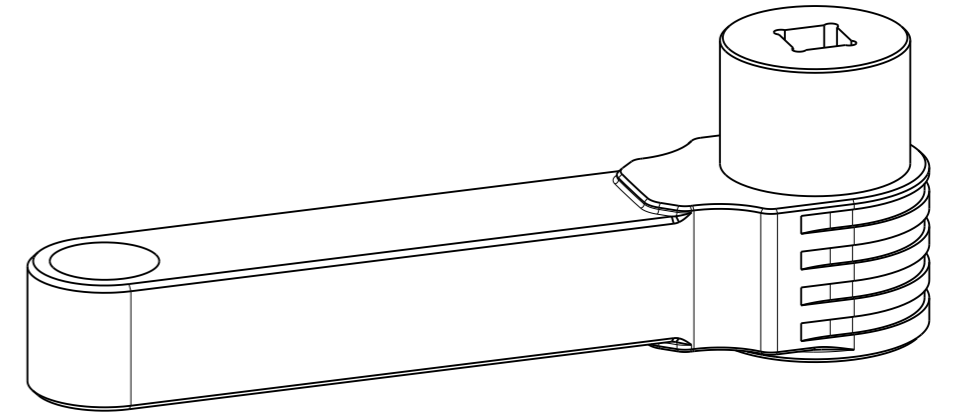
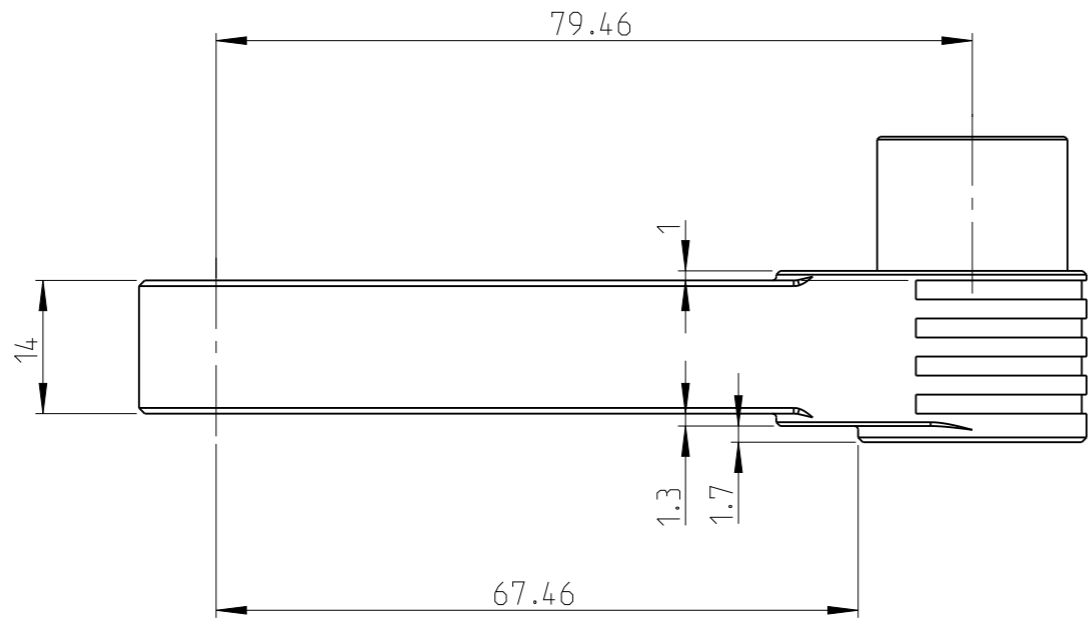
Input size	Square 3/8"
Gear stages	3
Theoretical efficiency	0.80
Gear ratio	1.00
Max output torque	9.50 Nm
Max input torque	11.88 Nm
Approximate weight	0.14 kg
Max hex output size A/F	8 mm

proprietary document. Not to be used in any way without our consent.

**SALTUS**

Name	GFA-COT-B-14-08-14-3
Designation	3512130084

PART	GFA-COT-14-NCIP	Status	In Work	Rev./Iter	0.6
Drawing	GFA-COT-14-NCIP	Status		Rev./Iter	0.5

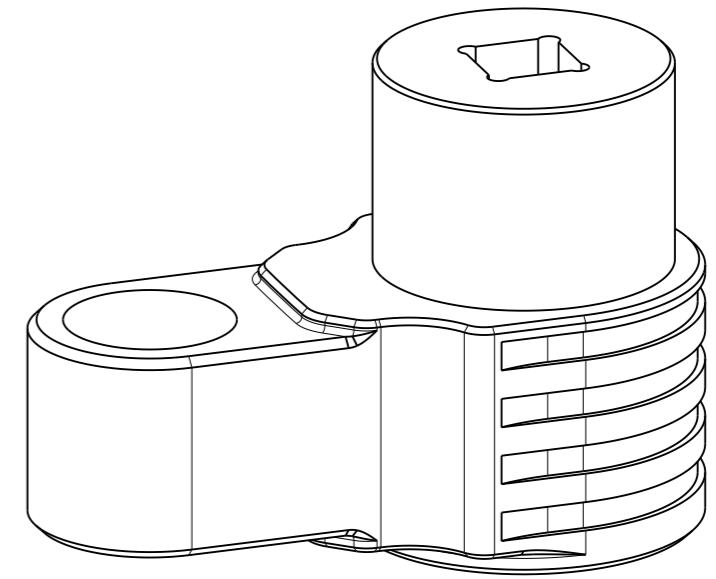
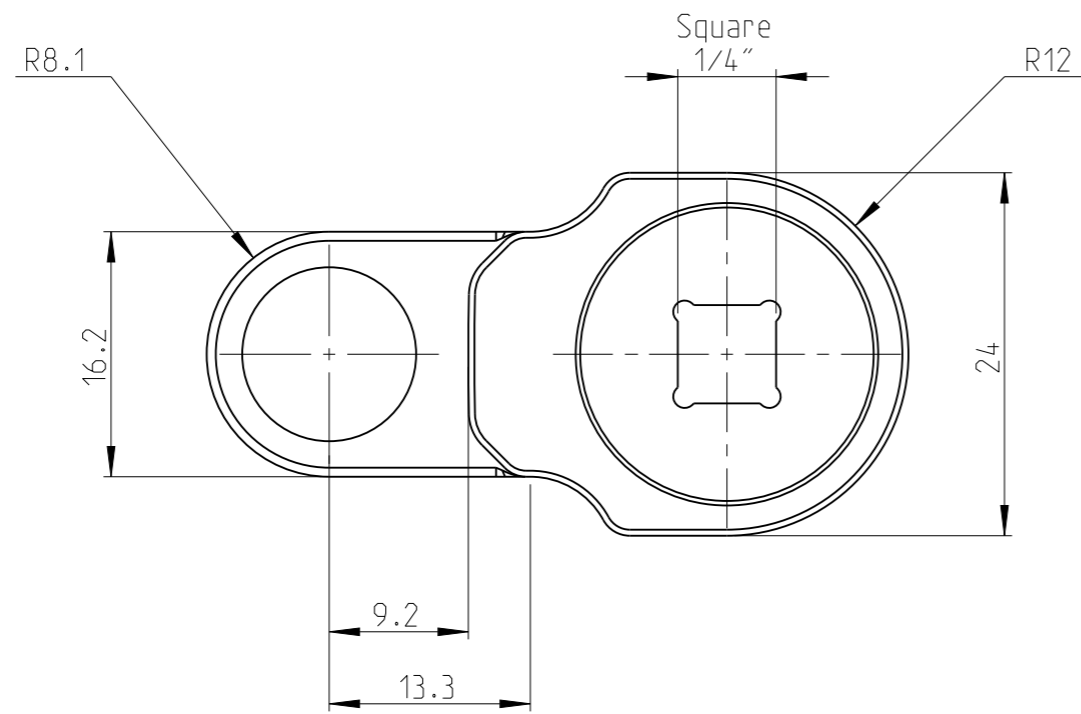
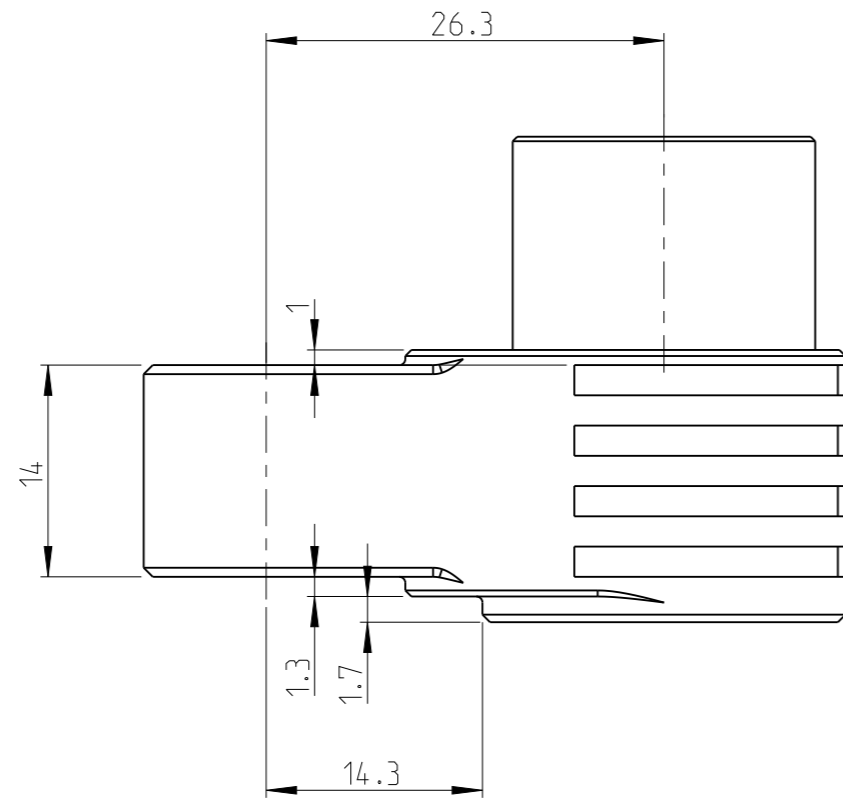


Input size	Square 1/4"
Gear stages	6
Theoretical efficiency	0.68
Gear ratio	1.00
Max output torque	8.10 Nm
Max input torque	11.91 Nm
Approximate weight	0.18 kg
Max hex output size A/F	8 mm

proprietary document. Not to be used in any way without our consent.

<b>SALTUS</b>	Name	GFA-COT-A-14-08-14-6
	Designation	3512130085

PART	GFA-COT-14-NCIP	Status	In Work	Rev./Iter	0.6
Drawing	GFA-COT-14-NCIP	Status		Rev./Iter	0.5

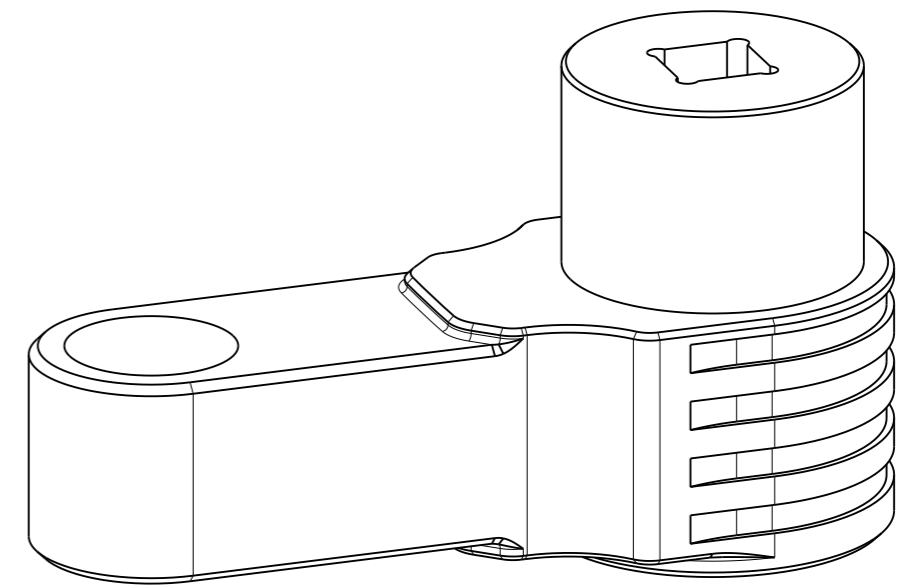
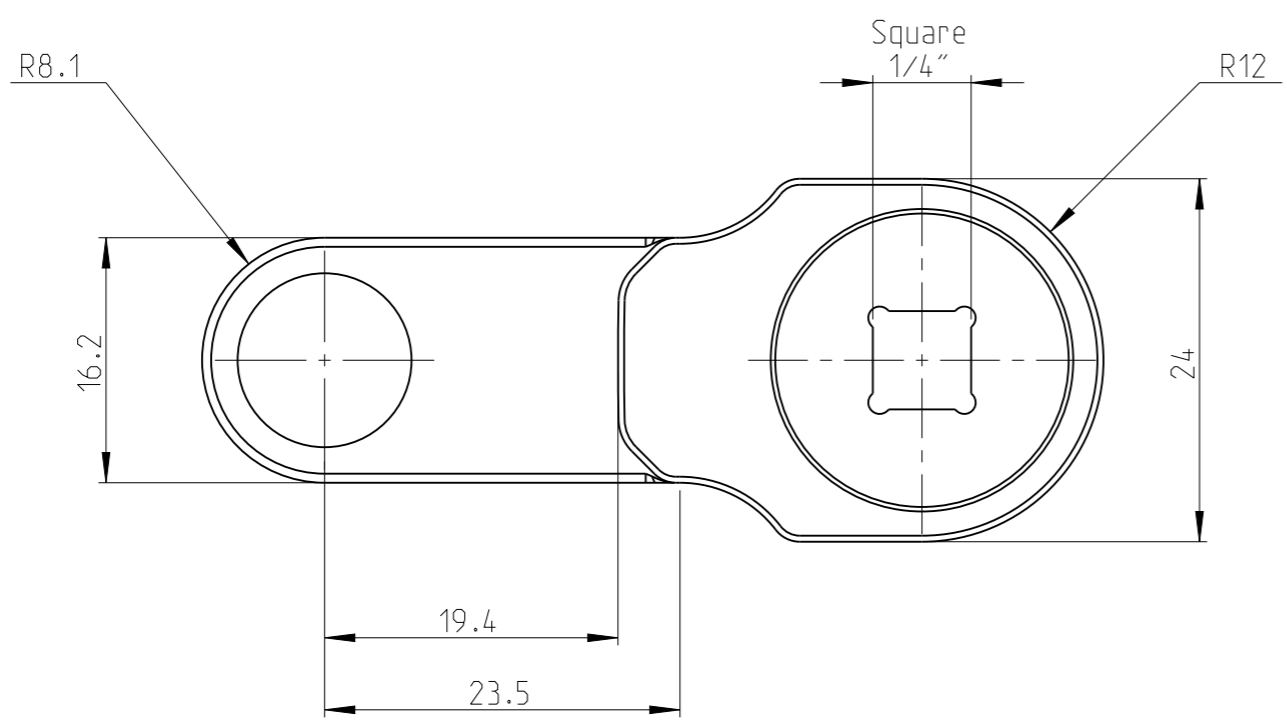
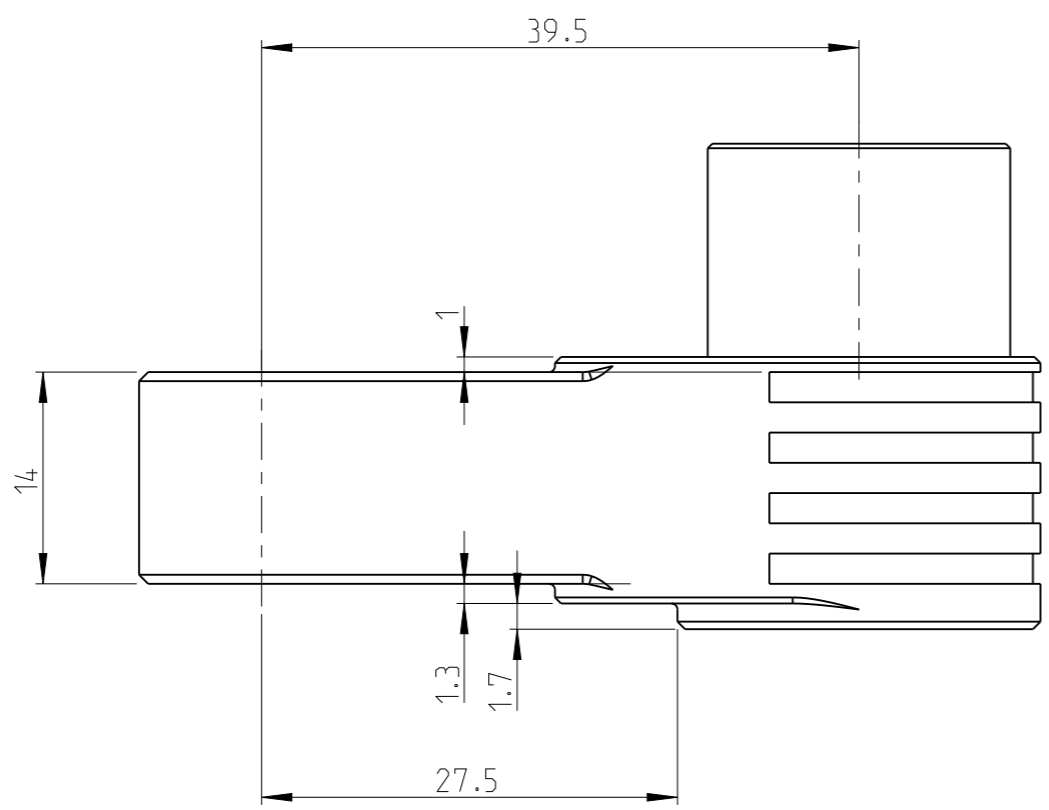


Input size	Square 1/4"
Gear stages	2
Theoretical efficiency	0.85
Gear ratio	1.00
Max output torque	9.50 Nm
Max input torque	11.18 Nm
Approximate weight	0.11 kg
Max hex output size A/F	8 mm

proprietary document. Not to be used in any way without our consent.

<b>SALTUS</b>	Name	GFA-COT-A-14-08-14-2
	Designation	3512130086

PART	GFA-COT-14-NCIP	Status	In Work	Rev./Iter	0.6
Drawing	GFA-COT-14-NCIP	Status		Rev./Iter	0.5



Input size	Square 1/4"
Gear stages	3
Theoretical efficiency	0.80
Gear ratio	1.00
Max output torque	9.50 Nm
Max input torque	11.88 Nm
Approximate weight	0.13 kg
Max hex output size A/F	8 mm

proprietary document. Not to be used in any way without our consent.

<b>SALTUS</b>	Name	GFA-COT-A-14-08-14-3
	Designation	3512130087