

A blue sign with white text that reads "Hydraulic wrenches".

Hydraulic wrenches

A blue sign with white text that reads "Trusted worldwide on critical applications due to the powerful torque output and long-lasting performance."

Trusted worldwide on critical applications due to the powerful torque output and long-lasting performance.

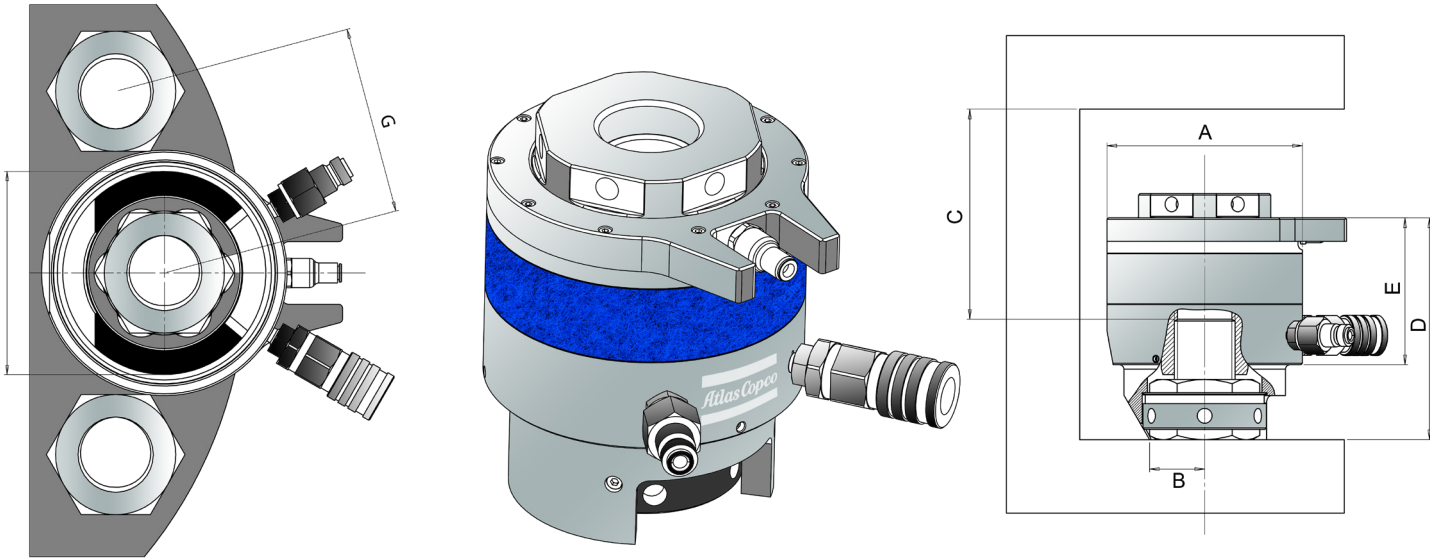
A large blue diagonal graphic overlay on the bottom left of the page. It contains a technical drawing of a tensioner with various dimensions and labels. The text "Airbac Tensioners" is written in white on this graphic.

Airbac Tensioners

The text "Technical specification & ordering numbers" is written in white on the blue diagonal graphic overlay.

Technical specification & ordering numbers

Technical Specifications



Maximum Working Pressure = 1500bar

Tool Identification	Thread Size	Tentec Complete Tool No	Ordering No	Dimensions												
				A	B	C	D	E	F	G						
AB-01	3/4"	HTT.18001.034	8434220431	73.5	53	79	62	49.5	79	62	49.5					
	M20 x 2.5	HTT.18001.020	8434220432									21	74	79	63	49.5
	7/8"	HTT.18001.078	8434220433									24	72	79	63	53
	M22 x 2.5	HTT.18001.022	8434220434									24	72	79	63	53
	1"	HTT.18001.100	8434220435									24	75.75	86	69	58.5
	M24 x 3	HTT.18001.024	8434220436									24	77	86	69	58.5
	1 1/8"	HTT.18001.118	8434220437									27	73.5	87	74	63.5
M27 x 3	HTT.18001.027	8434220438	27	75	87	74	63.5									
AB-02	1 1/8"	HTT.18002.118	8434220440	102	66	104	82	67.5	104	82	67.5					
	M27 x 3	HTT.18002.027	8434220441									27	99	104	85	69
	M30 x 3.5	HTT.18002.030	8434220442									31	97.5	107	85	72
	1 1/4"	HTT.18002.114	8434220443									31	96	107	85	72
	M33 x 3.5	HTT.18002.033	8434220444									34	97.25	110	91	78
	1 3/8"	HTT.18002.138	8434220445									34	96	110	91	78
	M36 x 4	HTT.18001.036	8434220446									36.5	96	112	90	80
1 1/2"	HTT.18002.112	8434220447	36.5	95	112	90	80									
M39 x 4	HTT.18002.039	8434220448	36.5	95	112	90	80									
AB-03	M36 x 4	HTT.18003.036	8434220450	133	100	153	97	83.5	153	97	83.5					
	1 1/2"	HTT.18003.112	8434220451									36.5	128.5	153	97	83.5
	M39 x 4	HTT.18003.039	8434220452									36.5	127.5	153	97	83.5
	1 5/8"	HTT.18003.158	8434220453									37.5	123.25	151	110	92.5
	M42 x 4.5	HTT.18003.042	8434220454									37.5	122.5	151	110	92.5
	1 3/4"	HTT.18003.134	8434220455									40.5	129.25	160	115	98
	M45 x 4.5	HTT.18003.045	8434220456									40.5	128.5	160	115	98
1 7/8"	HTT.18003.178	8434220457	42.5	126	160	116	101									
M48 x 5	HTT.18003.048	8434220458	42.5	125.5	160	116	101									
2"	HTT.18003.200	8434220459	50	123.75	161	120	106									
M52 x 5	HTT.18003.052	8434220460	50	122.5	161	120	106									
AB-04	M42 x 4.5	HTT.18004.042	8434220462	163	100	161	130	108	161	130	108					
	1 7/8"	HTT.18004.178	8434220463									43.5	128.75	161	130	108
	M48 x 5	HTT.18004.048	8434220464									43.5	128.25	161	130	108
	2"	HTT.18004.200	8434220465									46	124.5	160	124	108
	M52 x 5	HTT.18004.052	8434220466									46	123.25	160	124	108
	2 1/4"	HTT.18004.214	8434220467									55	124.25	166	134	118.5
	M56 x 5.5	HTT.18004.056	8434220468									55	125.25	166	134	118.5
M60 x 5.5	HTT.18004.060	8434220469	54	143.75	188.5	150	127									
2 1/2"	HTT.18004.212	8434220470	58	124.75	173	147	130.5									
M64 x 6	HTT.18004.064	8434220471	58	124.25	173	147	130.5									
AB-05	2 1/2"	HTT.18005.212	8434220473	193	111.25	184.25	147	130.5	184.25	147	130.5					
	M64 x 6	HTT.18005.064	8434220474									64	137.75	184.25	160	138
	M68 x 6	HTT.18005.068	8434220475									80	141.75	192.25	160	138
	2 3/4"	HTT.18005.234	8434220476									72	146	198.25	161	143
	M72 x 6	HTT.18005.072	8434220477									72	143.75	198.25	161	143
	3"	HTT.18005.300	8434220478									77	138.75	197.25	170	153
	M76 x 6	HTT.18005.076	8434220479									77	138.75	197.25	170	153
AB-06	3"	HTT.18006.300	8434220481	233	111.25	200.25	170	153	200.25	170	153					
	M76 x 6	HTT.18006.076	8434220482									77	141.75	200.25	178	155.5
	M80 x 6	HTT.18006.080	8434220483									78	138.75	201.25	178	155.5
	3 1/4"	HTT.18006.314	8434220484									78	136.25	201.25	182	165.5
	M85 x 6	HTT.18006.085	8434220485									78	133.75	201.25	182	165.5
	3 1/2"	HTT.18006.312	8434220486									86	136	207.25	191	174.5
	M90 x 6	HTT.18006.090	8434220487									86	134.75	207.25	191	174.5
3 3/4"	HTT.18006.334	8434220488	99	137.5	215.25	210	189.5									
M95 x 6	HTT.18006.095	8434220489	99	137.75	215.25	210	189.5									
4"	HTT.18006.400	8434220490	105	137.25	221.25	220	200									
M100 x 6	HTT.18006.100	8434220491	105	138.75	221.25	220	200									

Tool Identification	Thread Size	Complete Tool GA No	Ordering No	Conversion Kit No	Ordering No	Tool Load		Hydraulic Pressure Area		Stroke		Total Tool Weight		Load Cell Weight Only			
						kN	Ton	mm ²	In ²	mm	In	kg	lbs	kg	lbs		
AB-01	3/4"	HTT.18001.034	8434220431	HTT.18001.201	4222260050	227.81	22.86	1518.75	2.35	10	0.394	2.70	5.94	1.63	3.59		
	M20 x 2.5	HTT.18001.020	8434220432	HTT.18001.202	4222260051											2.70	5.94
	7/8"	HTT.18001.078	8434220433	HTT.18001.203	4222260052											2.6	5.72
	M22 x 2.5	HTT.18001.022	8434220434	HTT.18001.204	4222260053											2.62	5.76
	1"	HTT.18001.100	8434220435	HTT.18001.205	4222260054											2.70	5.94
	M24 x 3	HTT.18001.024	8434220436	HTT.18001.206	4222260055											2.75	6.05
	1 1/8"	HTT.18001.118	8434220437	HTT.18001.207	4222260056											2.72	5.98
M27 x 3	HTT.18001.027	8434220438	HTT.18001.208	4222260057	2.80	6.16											
AB-02	1 1/8"	HTT.18002.118	8434220440	HTT.18002.200	4222260058	443.06	44.47	2953.73	4.58	10	0.394	5.57	12.25	3.02	6.64		
	M27 x 3	HTT.18002.027	8434220441	HTT.18002.201	4222260059											5.64	12.41
	M30 x 3.5	HTT.18002.030	8434220442	HTT.18002.202	4222260060											5.68	12.50
	1 1/4"	HTT.18002.114	8434220443	HTT.18002.203	4222260061											5.50	12.10
	M33 x 3.5	HTT.18002.033	8434220444	HTT.18002.204	4222260062											5.49	12.08
	1 3/8"	HTT.18002.138	8434220445	HTT.18002.205	4222260063											5.56	12.23
	M36 x 4	HTT.18001.036	8434220446	HTT.18002.206	4222260064											5.57	12.25
1 1/2"	HTT.18002.112	8434220447	HTT.18002.207	4222260065	5.59	12.30											
M39 x 4	HTT.18002.039	8434220448	HTT.18002.208	4222260066	5.71	12.56											
AB-03	M36 x 4	HTT.18003.036	8434220450	HTT.18003.300	4222260067	810.85	81.38	5405.67	8.38	10	0.394	11.83	26.03	6.52	14.34		
	1 1/2"	HTT.18003.112	8434220451	HTT.18003.301	4222260068											11.67	25.67
	M39 x 4	HTT.18003.039	8434220452	HTT.18003.302	4222260069											11.72	25.78
	1 5/8"	HTT.18003.158	8434220453	HTT.18003.303	4222260070											11.37	25.01
	M42 x 4.5	HTT.18003.042	8434220454	HTT.18003.304	4222260071											11.52	25.34
	1 3/4"	HTT.18003.134	8434220455	HTT.18003.305	4222260072											11.66	25.65
	M45 x 4.5	HTT.18003.045	8434220456	HTT.18003.306	4222260073											11.71	25.76
1 7/8"	HTT.18003.178	8434220457	HTT.18003.307	4222260074	11.52	25.34											
M48 x 5	HTT.18003.048	8434220458	HTT.18003.308	4222260075	11.61	25.54											
2"	HTT.18003.200	8434220459	HTT.18003.309	4222260076	11.16	24.55											
M52 x 5	HTT.18003.052	8434220460	HTT.18003.310	4222260077	11.18	24.60											
AB-04	M42 x 4.5	HTT.18004.042	8434220462	HTT.18004.300	4222260078	1273.49	127.81	8489.93	13.16	10	0.394	18.32	40.30	9.51	20.92		
	1 7/8"	HTT.18004.178	8434220463	HTT.18004.301	4222260079											17.87	39.31
	M48 x 5	HTT.18004.048	8434220464	HTT.18004.302	4222260080											17.97	39.53
	2"	HTT.18004.200	8434220465	HTT.18004.303	4222260081											17.53	38.57
	M52 x 5	HTT.18004.052	8434220466	HTT.18004.304	4222260082											17.57	38.65
	2 1/4"	HTT.18004.214	8434220467	HTT.18004.305	4222260083											17.87	39.31
	M56 x 5.5	HTT.18004.056	8434220468	HTT.18004.306	4222260084											18.28	40.22
M60 x 5.5	HTT.18004.060	8434220469	HTT.18004.307	4222260085	20.52	45.14											
2 1/2"	HTT.18004.212	8434220470	HTT.18004.308	4222260086	17.36	38.19											
M64 x 6	HTT.18004.064	8434220471	HTT.18004.309	4222260087	17.71	38.96											
AB-05	2 1/2"	HTT.18005.212	8434220473	HTT.18005.400	4222260088	1829.47	183.61	12196.50	18.90	10	0.394	26.99	59.38	14.81	32.58		
	M64 x 6	HTT.18005.064	8434220474	HTT.18005.401	4222260089											27.35	60.17
	M68 x 6	HTT.18005.068	8434220475	HTT.18005.402	4222260090											28.05	61.71
	2 3/4"	HTT.18005.234	8434220476	HTT.18005.403	4222260091											29.08	63.98
	M72 x 6	HTT.18005.072	8434220477	HTT.18005.404	4222260092											29.33	64.53
	3"	HTT.18005.300	8434220478	HTT.18005.405	4222260093											26.98	59.36
	M76 x 6	HTT.18005.076	8434220479	HTT.18005.406	4222260094											27.76	61.07
AB-06	3"	HTT.18006.300	8434220481	HTT.18006.500	4222260095	2644.13	265.37	17627.51	27.32	10	0.394	41.45	91.19	20.33	44.73		
	M76 x 6	HTT.18006.076	8434220482	HTT.18006.501													



Atlas Copco AB
(publ) SE-105 23 Stockholm, Sweden
Phone: +46 8 743 80 00
Reg. no: 556014-2720
atlascopco.com

