

The Atlas Copco logo is displayed in white text on a teal rectangular background in the top right corner of the image.The text "Handheld Tools Book" is written in white on a teal triangular graphic in the bottom left corner. The background of the entire image is a construction site showing a large concrete wall being demolished with yellow Atlas Copco handheld tools. A yellow generator is visible on top of the wall, and a large black structure is in the background under a blue sky with clouds. A technical drawing is overlaid on the teal triangle.



# Content

## Reliable, ergonomic and safe handheld tools..... 04

### Handheld pneumatic tools

#### Introduction ..... 08

#### Hammers ..... 12

- Standard pneumatic hammers
- Vibration reduced pneumatic hammers
- Rivet busters

#### Breakers ..... 15

- Light pneumatic breakers
- RTEX range of pneumatic breakers
- Medium pneumatic breakers
- Heavy pneumatic breakers

#### Pneumatic rock drills ..... 19

- Light pneumatic rock drills
- Medium pneumatic rock drills
- Heavy pneumatic rock drills
- Pneumatic combi drills/hammers
- Stoppers

#### Underground rock drills ..... 24

- Underground pneumatic rock drills
- Pusher legs

#### Rig mounted pneumatic rock drills..... 26

#### DIP and DOP pneumatic submersible pumps ..... 27

#### Impact wrenches and needle scalers ..... 28

#### Scabblers ..... 29

#### Tampers ..... 30

#### Nomenclature..... 31

### Handheld hydraulic tools

#### Introduction ..... 35

#### Hydraulic hammers ..... 36

#### Hydraulic breakers..... 37

#### Hydraulic core drills..... 38

#### Hydraulic cut-off saws ..... 39

#### Hydraulic post and ground rod drivers ..... 40

#### Hydraulic post puller ..... 41

#### Hydraulic power packs..... 42

#### Nomenclature..... 43

### Handheld motor drill and breakers

#### Introduction ..... 47

#### Cobra range..... 48

#### Accessories list for Cobra Combi and Pionjär ..... 50

## Reliable, ergonomic and safe handheld tools

At Atlas Copco, we know the tools of the trade when it comes to designing construction equipment. Ergonomic, easy to handle and reliable, they will be your best friend for heavy-duty construction work.



Try our 'HAPS' enabled machines and you'll feel the difference. 'HAPS' stands for "Hand and Arm Protection Systems", an innovation that minimizes the impact of vibrations on the operator. We make sure every product is well-balanced and comfortable to handle. With an 'HAPS' enabled machine, you can work up to six times longer every day. Imagine what you can do with that time...



Precision engineering, top-quality materials and modern engines with low fuel consumption and fewer emissions: Atlas Copco breaks the mold for long-lasting equipment. In the case of our handheld tools, less parts means fuss-free products, low lifecycle costs and a high trade-in value. With their solid bodies, our tools handle whatever force you throw at them. Reliable and powerful equipment, but also excellent service whenever and wherever you need it, we'll make sure that at the end of the day, you got your job done.



Swap tools in no time thanks to the quick kick latch (on selected models), or just unscrew the tool. Of course all our working tools are interchangeable between various models. The versatility of our breakers and hammers allows for fast tool changes and less inventory.

# Always the right tool for the job

## Pneumatic tools:

- Ergonomic best-in-class
- The best possible power-to-weight ratio
- Versatile: a tool for every application
- One compressor can power several tools
- Lowest total cost of ownership

Do you have to use the tool for longer than 1 hour a day?

YES

→ PNEUMATIC



NO

Do you have other pneumatic tools on site?

YES

→ PNEUMATIC

## Petrol-driven tools:

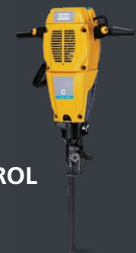
- Fully autonomous
- Ideal for remote locations and disaster areas

NO

Are you working in a remote location without power supply?

YES

→ PETROL



## Hydraulic tools:

- Ideal when space is limited
- Compact and fast set-up

NO

Do you need the highest power to weight ratio?

YES

→ HYDRAULIC



NO – Just give me the latest innovation

## Other reasons why to use hydraulic tools:

- Higher power to weight ratio
- More silent, no blowing





# Handheld pneumatic tools



## Handheld pneumatic tools

Our pneumatic tools are ergonomically best in class and have an excellent power-to-weight ratio, making them suitable for various construction applications.

### Solid Body concept

The one-piece machine body means fewer parts. This will help to increase reliability. The concept also gives a low centre of gravity to our breakers and thus a good balance of the product.

### 'HAPS' system

By reducing the in-use vibration value of the machine, our 'HAPS' system helps to decrease the negative effects of harmful vibration at a given trigger time.

### Highly efficient silencer

The wear-resistant polyurethane silencer cuts the noise emission by up to 75% (as compared to the same machine without noise reduction, ISO 2000/14/EC).

### SOFSTART trigger

The two-step trigger gives the operator full control when starting a cut – even under difficult conditions. Available with selected tools only.

### Air cushioned piston

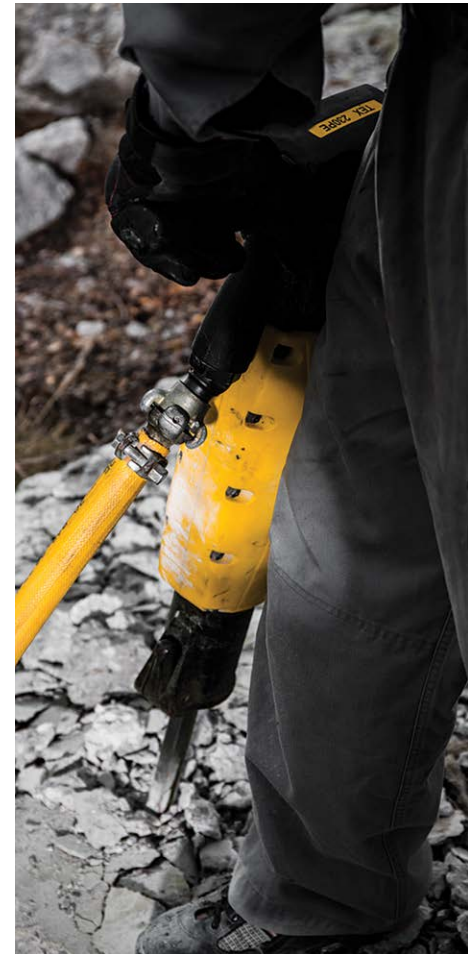
To reduce vibration and wear, the piston turns on air-cushions at either end of the cylinder. When working off-load, this practically eliminates metal-to-metal contact.

### Rotating air inlet swivel

Easy handling of the tool, even when pressurized. Available with selected tools only.

### Integrated lubricator

Helps to minimize tool wear and is excellent for cold conditions, when it can be used for anti-freeze, such as our Breaker and Hammer AIR-OIL. It holds enough lubricant for an entire shift of normal work. Available with selected tools only.



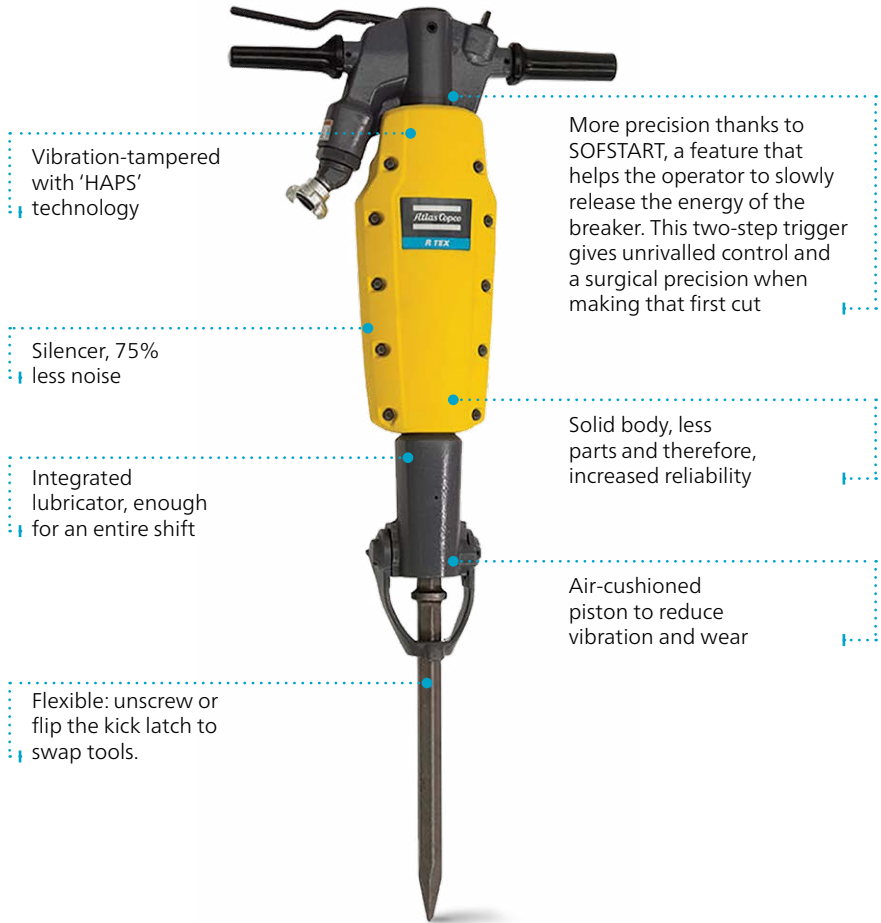


## Handheld pneumatic tools

A workman with an Atlas Copco machine will never have to blame his tools. Our pneumatic breakers and hammers are designed to get more work done in a day. 'HAPS' technology dampens vibrations and the tool's single casting design means fewer parts, less fuss. Try an Atlas Copco pneumatic breaker or hammer and you'll feel the difference: our well-balanced pneumatic tools offer excellent ergonomics.



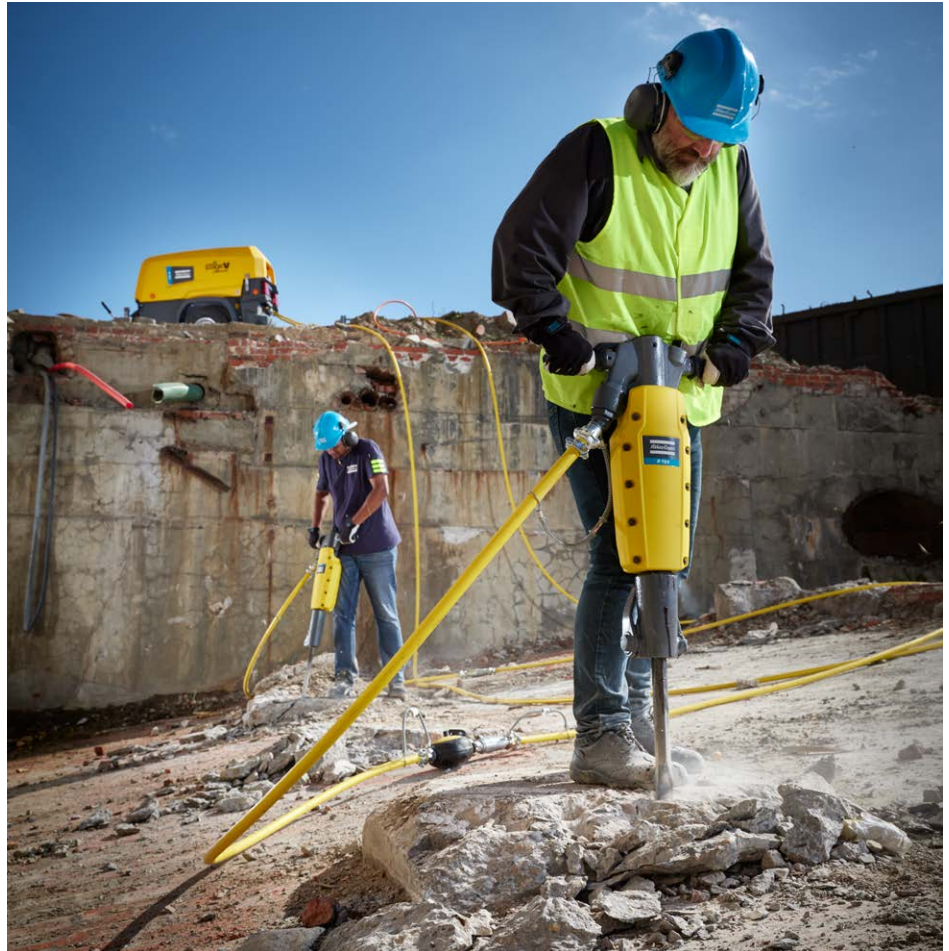
**The two-tooler:**  
downsize for savings  
Energy-efficient handheld tools allow you to downsize your compressor, or to run several breakers on the same compressor.



## Tools - Compressor sizing guide

### Need to get a lot of work done?

One compressor can often run several pneumatic tools at once. The RTEX even has double the breaking capacity per liter of compressed air compared to a conventional breaker. This means you need a compressor half the size as previously, or you can double up your breakers from the same power source, all at no additional cost.



# Tools - Compressor sizing guide

		Tools model	TEX 05	TEX 09	TEX 12	RTEX 15 <sup>3)</sup>	TEX 150	TEX 190	RTEX 25 <sup>3)</sup>	TEX 230	TEX 280	RTEX 35 <sup>3)</sup>	TEX 33	TEX 40	
		Type of tool	hammer	hammer	hammer	light breaker	light breaker	light breaker	medium breaker	medium breaker	medium breaker	medium breaker	heavy breaker	heavy breaker	
		Weight (kg)	6,3	10,5	12	17	19	23	25	25,5	31,5	33,2	37	42	
	Air consumption (6 bar)	m <sup>3</sup> /min	0,6	1	1,2	0,9	1,5	1,6	1,1	1,8	1,9	1,3	2	2,4	
		l/s	10	17	20	15,4	25	26	18	30	32	21,5	34	40	
		cfm	21	36	42	31,8	53	55	38	64	68	45,5	72	85	
	Compressor model	Free Air Delivery at 6 bar													
		m <sup>3</sup> /min	cfm												
Diesel	XAS 27	1,6	60	2	1	1	1	1	1	0	0	1	0	0	
	XAS 38	2	70	3	2	1	2	1	1	1	1	1	0	0	
	XAS 48 (G)	2,5	90	4	2	2	2	1	1	2	1	2	1	1	
	XAS 58 XAS 58-7 (G)	3	110	5	2	2	3	2	2	2	1	2	1	1	
	XA(T)S 68 (G) / XAS 68-7 (G) / XAS 68-10 / XAS 68-12 PACE	3,5	130	5	3	2	3	2	2	3	1	1	2	1	1
	XAS 78	4,5	160	7	4	3	5	3	2	4	2	2	3	2	1
	XAS 88 (G) / XAS 88-7 (G) / XAS 88-10 PACE	5	175	8	4	4	5	3	3	4	2	2	3	2	2
	XAS 98 (G)	5,4	190	8	5	4	5	3	3	5	2	2	4	2	2
	Electric	E-Air H185 VSD, at 50A <sup>2)</sup>	5,4	192	9	5	4	6	3	3	5	3	2	4	2
E-Air H250 VSD, at 63A <sup>2)</sup>		6,6	233	11	6	5	7	4	4	6	3	3	5	3	2

<sup>1)</sup>Compressors with "G" in the name have a built-in generator. Compressors with PACE in their name have an adjustable pressure between 5 bar and the maximum pressure indicated in the product name.

<sup>2)</sup>For electric compressors, the free air delivery depends on the electric current (16, 32, 50 or 64A). Figures in this overview are based on the highest electric current.

<sup>3)</sup>The RTEX models have increased breaking capacity per liter of compressed air compared to a conventional breaker. This means you can use a smaller compressor size for the same breaking power or you can increase the number of breakers to be used with the same power source.

# Standard pneumatic hammers

## Applications depending on weight class:

- Light-duty chipping and scaling work
- Renovation and conversion work
- Demolition

## Features:

- Softstart two-step trigger (selected models)
- Noise-reduction
- Air cushioned piston



Pneumatic hammers		TEX 02	TEX 03 PS <sup>3)</sup>	TEX 05 P <sup>2),3)</sup>	TEX 09 PS KL	TEX 09 PS	TEX 10 PS KL	TEX 10 PS	TEX 12 PS KL	TEX 12 PS
Weight	kg	2,5	4,0	5,5	12	10	10,5	10	12,5	10,5
Length	mm	273	300	380	500	500	500	520	545	550
Air consumption	l/s	7	6,9	9,5	18,5	18,5	17	17	21,3	21,3
Impact rate	blows/min	3000	4140	2760	1800	1800	1350	1350	1600	1600
Vibration level 3 axes (ISO 28927-10)	m/s <sup>2</sup>	8	16,5	13	16,1	16,1	22,4	22,4	15,4	15,4
Sound power level guaranteed (2000/14/EC)	Lw, dB(A)	106	105	104	105	103	103	102	105	105
Sound pressure level (ISO 11203)	Lp, r=1m	95	89	92	93	91	91	90	92	93
Tool retainer		spring	cap	cap	kick-latch	cap	kick-latch	cap	kick-latch	cap
Part number with shank H 19x50 mm		-	8461 0208 01	8461 0219 00	-	-	-	-	-	-
Part number with shank ISO H 22x82,5 mm		-	-	-	8461 0211 05	8461 0211 02	8461 0211 32	8461 0211 30	8461 0211 12	8461 0211 13
Part number with shank US H22x82,5 mm		-	-	-	8461 0211 06	-	-	-	8461 0211 16	-
Part number with round shank 12 mm		8461 0208 06	-	-	-	-	-	-	-	-
Part number with round shank 17,3x60 mm		-	-	8461 0219 03	-	-	-	-	-	-
Part number with round shank 25x75 mm		-	-	-	-	-	-	8461 0211 31	8461 0211 15	8461 0211 14
Part number Kit <sup>1)</sup>		-	8461 0208 02	8381 0200 33 8461 0219 02	-	-	-	-	8381 0200 41	8381 0200 40

Data at 6 bar (90 psi) air pressure

<sup>1)</sup>For the contents of the available Kits, see page 31

<sup>2)</sup>Also available with combined hexagonal/round shank (part no: 8461 0219 01)

<sup>3)</sup>Also available in carrying case as complete set (hexagonal shank only)

Claw couplings not included in delivery

Suitable couplings:

TEX 09, 10 and 12	Atlas Copco Standard	9000 0306 00
	Atlas Copco Standard with strainer	9000 0306 01
	US Standard (not for TEX 10)	9001 0005 06
TEX 03, TEX 05	Atlas Copco Standard	9000 0305 00

# Vibration reduced pneumatic hammers

## Applications depending on weight class:

- Light duty chipping and scaling work
- Renovation and conversion work
- Demolition
- Kiln stripping

## Features:

- Full canopy vibration reduced
- Noise-reduction
- Softstart two-step trigger
- 'HAPS' Hand and Arm Protection System
- Air cushioned piston (TEX 05, 07, 09 and 12)
- Easy handling and positioning



Pneumatic hammers		TEX 05 PE	TEX 07 PE	TEX 09 PE <sup>1)</sup>	TEX 12 PE <sup>1)</sup>
Weight	kg	6,5	8,7	10,5	12
Length	mm	450	525	560	590
Air consumption	l/s	10	17	17	20
Impact rate	blows/min	2640	1770	1800	1620
Vibration level 3 axes (ISO 28927-10)	m/s <sup>2</sup>	2,4	12,4	4,2	4,0
Sound power level guaranteed (2000/14/EC)	Lw, dB(A)	105	104	105	105
Sound pressure level (ISO 11203)	Lp, r=1m	87	87	93	93
Tool retainer		cap	cap	latch	latch
Part number with shank H 19x50 mm		8461 0219 10	8461 0209 20	-	-
Part number with shank H 22x82,5 mm		-	-	8461 0211 35	8461 0211 38
Part number with round shank 25x75 mm		-	-	8461 0211 36	8461 0211 39

Data at 6 bar (90 psi) air pressure

<sup>1)</sup>Front side handle included

Claw couplings not included in delivery

Suitable couplings:

TEX 05E	Atlas Copco Standard	9000 0305 00
TEX 09 & 12	Atlas Copco Standard	9000 0306 00
	Atlas Copco Standard with strainer	9000 0306 01
	US Standard	9001 0005 06

# Rivet busters

## Application:

- Used for removing rivets in metal and concrete applications, including demolition and bridge work. Choose either for pistol grip or a classic D-handle.

## Features:

- Excellent power-to-weight ratio
- Teasing throttle for precise control
- Rugged design and components for reliable operation under tough conditions
- Stepped cylinder design for added safety

Rivet busters		TEX 14 pistol	TEX 14 D	TEX 15 pistol	TEX 15 D
Weight	kg	13,7	14,1	15	15,4
Length	mm	584	600	660	676
Air consumption	l/s	21	21	21	21
Impact rate	blows/min	900	900	720	720
Vibration level 3 axes (ISO 20643)	m/s <sup>2</sup>	12,6	12,3	13,3	14,3
Sound power level guaranteed (2000/14/EC)	Lw, dB(A)	105	105	105	105
Sound pressure level (ISO 11203)	Lp, r=1m	93	93	93	93
Trigger type		Outside	Inside	Outside	Inside
Handle type		Open	D	Open	D
Cylinder		Short (8")	Short (8")	Long (11")	Long (11")
Shank size		Jumbo	Jumbo	Jumbo	Jumbo
Part number		8461 0250 16	8461 0250 17	8461 0250 18	8461 0250 19



Data at 6 bar (90 psi) air pressure

Claw couplings not included in delivery

Suitable couplings:

Atlas Copco Standard 9001 0005 01



# Light pneumatic breakers

## Applications:

- Light breakers for service jobs and general demolition

## Features:

- Solid Body concept
- Noise-reduction
- 'HAPS' Hand and Arm Protection System (PE series)
- SOFSTART two-step trigger
- Rotating air inlet swivel
- Integrated lubricator
- Air cushioned piston



Pneumatic breakers		TEX 150 PE		TEX 190 PE		TEX 21 PE
Vibration reduced		YES	YES	YES	YES	YES
Weight	kg	19	19	22,5	23	21
Length	mm	590	590	595	645	650
Air consumption	l/s	25	25	26	26	25
Impact rate	bpm	1530	1530	1500	1500	1140
Vibration level 3 axes (ISO 28927-10)	m/s <sup>2</sup>	4,5	4,5	3,7	3,7	7,6
Sound power level guaranteed (2000/14/EC)	Lw, dB(A)	104	104	104	104	105
Sound pressure level (ISO 11203)	Lp, r=1m	91	91	92	91	93
Part number with shank H 22x82,5 mm		8461 0223 31	-	-	-	-
Part number with shank ISO H 25x108 mm		-	8461 0223 33	8461 0224 31	-	8461 0224 22
Part number with shank US H 25x108 mm		-	8461 0223 35	8461 0224 35	-	-
Part number with shank H 28x160 mm		-	-	-	8461 0224 33	-

Data at 6 bar (90 psi) air pressure  
Claw couplings not included in delivery

Suitable couplings:  
Atlas Copco Standard 9000 0306 00  
Atlas Copco Standard with strainer 9000 0306 01  
US Standard 9001 0005 06

## RTEX range of pneumatic breakers

With our newest innovation, the Atlas Copco RTEX, you'll be demolishing without breaking a sweat. Lightweight, powerful and efficient, this tool is both ergonomic and economic. You'll be able to work longer while only consuming half the air. As a result, your compressor can also go down a size, or you can pair two tools with one compressor.

The secret of the RTEX lies in the innovative long piston design. A longer piston, compared to a conventional breaker, increases the interaction time with each blow. As a result, the RTEX has the breaking power to match a much heavier breaker. The efficient stroke mechanism radically lowers energy consumption.



**25%**  
LIGHTER, CUSHIONED  
FOR **LESS**  
VIBRATIONS

**50%**  
LESS AIR  
CONSUMED

**FASTER  
BREAKING**  
THANKS TO SOFSTART  
AND STIFF HANDLES

*(Compared to a comparable, conventional breaker, for example an Atlas Copco TEX breaker)*

Pneumatic breakers		RTEX 15		RTEX 25		RTEX 35	
Weight	kg	17	25	25	25	33,2	33,2
Length	mm	674	737	780 / 685 (notched chisel)	780	845 / 748	845
Air consumption	l/s	15,4	19	17,5	18	21,5	21,5
Impact rate	blows/min	936	816	845	870	660	660
Vibration level 3 axes (ISO 28927-10) <sup>1)</sup>	m/s <sup>2</sup>	4,6	4,8	4,8	4,8	5,3	5,1
Sound power level guaranteed (2000/14/EC)	Lw, dB(A)	106	107	107	107	107	107
Sound pressure level (ISO 11203) <sup>1)</sup>	Lp, r=1m	83	90	90	90	86	86
Part number with shank ISO H 25 X 108 mm		8461 0115 10	8461 0125 10	-	-	-	-
Part number with shank US H 25 X 108 mm		8461 0115 11	8461 0125 11	-	-	-	-
Part number with shank H 28x160 mm		-	-	8461 0125 20	-	8461 0135 20	-
Part number with shank H 32x160 mm		-	-	-	8461 0125 30	-	8461 0135 30

Data at 6 bar (90 psi) air pressure  
Claw couplings not included in delivery

Suitable couplings:

Atlas Copco Standard	9000 0306 00
Atlas Copco Standard with strainer	9000 0306 01
US Standard	9001 0005 06

# Medium pneumatic breakers

## Applications:

- Medium breakers for service jobs and general demolition
- TEX P60: asphalt and other medium hard materials

## Features:

- Solid Body concept
- Noise-reduction
- 'HAPS' Hand and Arm Protection System (PE series)
- Softstart two-step trigger
- Rotating air inlet swivel
- Integrated lubricator
- Air cushioned piston



Pneumatic breakers		TEX 230 PE		TEX 280 PE		TEX P60S	
Vibration reduced		YES	YES	YES		NO	
Weight	kg	25,5	27	31,5		33	
Length	mm	625	670	690		690	
Air consumption	l/s	30	30	32		36	
Impact rate	bpm	1320	1320	1230		1500	
Vibration level 3 axes (ISO 28927-10)	m/s <sup>2</sup>	4,2	4,2	4,8		16,8	
Sound power level guaranteed (2000/14/EC)	Lw, dB(A)	104	106	105		109	
Sound pressure level (ISO 11203)	Lp, r=1m	92	93	92		97	
Part number with shank ISO H 25x108 mm		8461 0225 31	-	-		-	
Part number with shank H 28x160 mm		-	8461 0225 34	8461 0226 32		8461 0227 22	
Part number with shank H 32x160 mm		-	8461 0225 35	8461 0226 33		8461 0227 23	
Part number Kit <sup>1)</sup>		-	-	-		8381 0200 56	

Data at 6 bar (90 psi) air pressure

<sup>1)</sup>For the contents of the available Kits, see page 31

Claw couplings not included in delivery

Suitable couplings:

Atlas Copco Standard	9000 0306 00
Atlas Copco Standard with strainer	9000 0306 01
US Standard	9001 0005 06

# Heavy pneumatic breakers

## Applications:

- Heavy-duty demolition breakers for use in medium and hard materials such as asphalt and reinforced concrete

## Features:

- Noise-reduction
- 'HAPS' Hand and Arm Protection System (PE series)
- Rotating air inlet swivel
- Integrated lubricator
- Air cushioned piston



Pneumatic breakers		TEX 33 PE	TEX 37 <sup>2)</sup>	TEX 40 PE	TEX P90S
Vibration reduced		YES	NO	YES	NO
Weight	kg	37	37	42	43
Length	mm	745	729	750	710
Air consumption	l/s	34	35	40	40
Impact rate	bpm	1200	1200	1110	1260
Vibration level 3 axes (ISO 28927-10)	m/s <sup>2</sup>	5,7	19,5	4,2	15,3
Sound power level (2000/14/EC)	Lw, dB(A)	111	n/a	111	111
Sound pressure level (ISO 11203)	Lp, r=1m	99	n/a	99	99
Part number with shank H 28x160 mm		8461 0227 01	-	8461 0228 05	8461 0228 22
Part number with shank H 32x160 mm		8461 0227 00	8461 0229 12	8461 0228 04	8461 0228 23
Part number Kit (except US & Canada) <sup>1)</sup>		-	-	-	8381 0200 58

Data at 6 bar (90 psi) air pressure

<sup>1)</sup>For the contents of the available Kits, see page 31

<sup>2)</sup>Available only for low-regulated markets

Claw couplings not included in delivery.

Suitable couplings:

Atlas Copco Standard	9000 0306 00
Atlas Copco Standard with strainer	9000 0306 01
US Standard	9001 0005 06

# Light pneumatic rock drills

## Applications:

- Drills up to 2 m depth
- Plug hole drilling
- Anchor and wedge hole drilling

## Features:

- Noise-reduction (S-versions)
- 'HAPS' Hand and Arm Protection System (E-versions)
- Built-in air flushing
- Trigger version available (ET)



Pneumatic rock drills		BBD 12 D	BBD 12 DS	BBD 12 DCS	BBD 12 T	BBD 12 TS	BBD 15 E	BBD 15 ET
Weight	kg	9,8	10,7	10,5	11,1	12,1	15,5	15,6
Length	mm	565	565	560	505	505	575	575
Air consumption	l/s	24	22	22	24	22	22	22
Impact rate	blows/min	2580	2580	2580	2580	2580	2520	2520
Revolutions	rpm	220	220	220	220	220	220	220
Penetration rate	mm/min	250 <sup>1)</sup>	230 <sup>1)</sup>	230 <sup>1)</sup>	150 <sup>2)</sup>	150 <sup>2)</sup>	220 <sup>1)</sup>	220 <sup>1)</sup>
Hose connection	mm	13	13	13	19	19	19	16
Vibration level 3 axes (ISO 20643)	m/s <sup>2</sup>	22,2	22,2	22,2	16	16	7	7
Sound power level (2000/14/EC)	Lw, dB(A)	114	108	108	116	111	110	110
Sound pressure level (ISO 11203)	Lp, r=1m	103	97	97	103	98	97	97
Part number with shank H 19x108 mm		8311 0102 47	8311 0102 80	-	-	-	8311 0104 02	8311 0104 12
Part number with shank H 22x108 mm		8311 0102 96	-	8311 0101 63	8311 0102 95	8311 0102 98	8311 0104 10	8311 0104 13

Data at 6 bar (90 psi) air pressure

<sup>1)</sup>In granite, drilling with 28 mm at 6 bar

<sup>2)</sup>In granite, drilling with 32 mm at 6 bar

Claw couplings not included in delivery.

# Medium pneumatic rock drills

## Applications:

- Drills up to 6 m depth
- Production drilling in quarry/dimension stone industry
- Blast hole and secondary drilling

## Features:

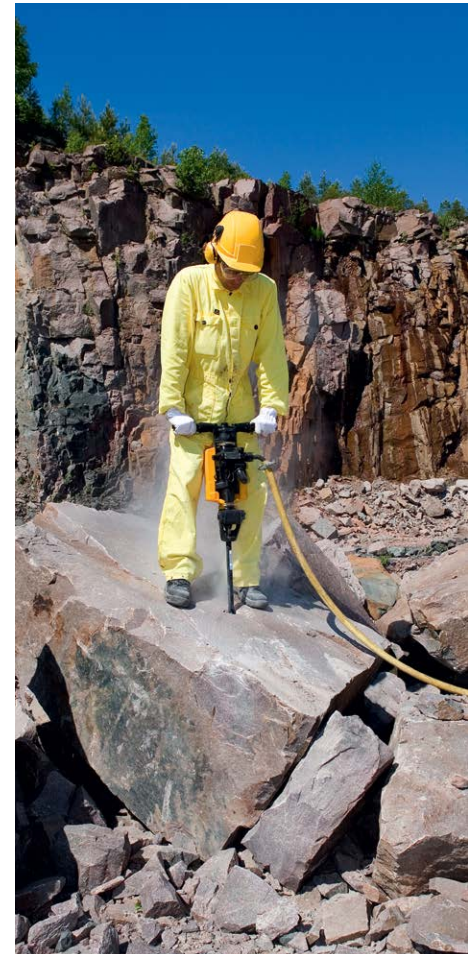
- Noise-reduction
- 'HAPS' Hand and Arm Protection System
- Built in air flushing
- Extra flushing for quick and efficient hole cleaning with non stop drilling

Pneumatic rock drills		RH 571	RH 571 S	RH 572 E
Weight	kg	17,8	18,9	22,8
Length	mm	510	510	583
Air consumption	l/s	39	39	37
Impact rate	blows/min	2100	1980	2040
Revolutions	rpm	190	190	170
Penetration rate <sup>1)</sup>	mm/min	295	275	260
Hose connection	mm	19	19	19
Vibration level 3 axes (ISO 20643)	m/s <sup>2</sup>	23,2	23,2	9,7
Sound power level (2000/14/EC)	Lw, dB(A)	119	112	113
Sound pressure level (ISO 11203)	Lp, r=1m	106	99	100
Silenced		no	yes	no
Vibration reduced		no	no	yes
Part number with shank H 22x108 mm		8311 0301 29	8311 0301 37	8311 0301 78

Data at 6 bar (90 psi) air pressure

<sup>1)</sup>In granite, drilling with 32 mm at 6 bar

Claw couplings not included in delivery





# Heavy pneumatic rock drills

## Applications:

- Drills up to 6 m depth
- Production drilling in quarry / dimension stone industry
- Blast hole and secondary drilling

## Features:

- Noise-reduction (S-versions)
- 'HAPS' Hand and Arm Protection System (E-versions)
- Built-in air flushing
- Extra flushing for quick and efficient hole cleaning



Pneumatic rock drills		RH 658	RH 658 LRC <sup>2)</sup>	RH 658 S	SRD 25 E
Weight	kg	24	24	25	27
Length	mm	565	565	565	600
Air consumption	l/s	58	58	58	50
Impact rate	blows/min	2040	2040	2040	2040
Revolutions	rpm	215	215	215	250
Penetration rate <sup>1)</sup>	mm/min	425	425	425	336
Hose connection	mm	19	19	19	19
Vibration level 3 axes (ISO 20643)	m/s <sup>2</sup>	21,2	21,2	21,2	10.7
Sound power level guaranteed (2000/14/EC)	Lw, dB(A)	116	116	112	110
Sound pressure level (ISO 11203)	Lp, r=1m	106	106	99	n/a
Silenced		no	no	yes	yes
Vibration reduced		no	no	no	yes
Part number with shank H 22x108 mm		8311 0302 86	8311 0302 77	8311 0302 87	8311 0325 10
Part number with shank H 25x108 mm		8311 0302 89	-	-	8311 0325 09

Data at 6 bar (90 psi) air pressure

<sup>1)</sup>Penetration rate is mentioned under test conditions on granite, however it may vary depending on hardness it may vary depending on hardness of material and operator skill.

<sup>2)</sup>Available only for low-regulated markets

Claw couplings not included in delivery.

Suitable couplings:

Atlas Copco Standard	9000 0306 00
Atlas Copco Standard with strainer	9000 0306 01
US Standard	9001 0005 06

# Pneumatic combi drills/hammers

## Applications depending on weight class:

- Plug hole drilling 8-32 mm diameter
- Wedge hole drilling
- Chipping and scaling
- Renovation and rebuilding
- Underwater work

## Features:

- Built-in air flushing
- Noise-reduction
- Switching between drilling/chipping by change of working tool
- Built-in lubricator

Pneumatic combi drills/hammers		DKR 36	DKR 36R
Weight	kg	4,5	4,5
Length	mm	375	375
Air consumption at 6 bar	l/s	10	10
Impact rate	blows/min	2820	2820
Revolutions	rpm	250	250
Penetration rate	mm/min	180 <sup>1)</sup> /160 <sup>2)</sup>	180 <sup>1)</sup> /160 <sup>2)</sup>
Hose connection	mm	19	19
Vibration level 3 axes (ISO 28927-10)	m/s <sup>2</sup>	20,2 (breaking) / 21,2 (drilling)	20,2 (breaking) / 21,2 (drilling)
Sound power level guaranteed (2000/14/EC)	Lw, dB(A)	103	103
Sound pressure level (ISO 11203)	Lp, r=1m	88	88
Part number with shank R19xH14,7x89 mm		8463 0103 60	-
Part number with shank R19x95 mm		-	8463 0103 50

Data at 6 bar (90 psi) air pressure

<sup>1)</sup>19 mm drill in granite

<sup>2)</sup>19 mm drill in concrete

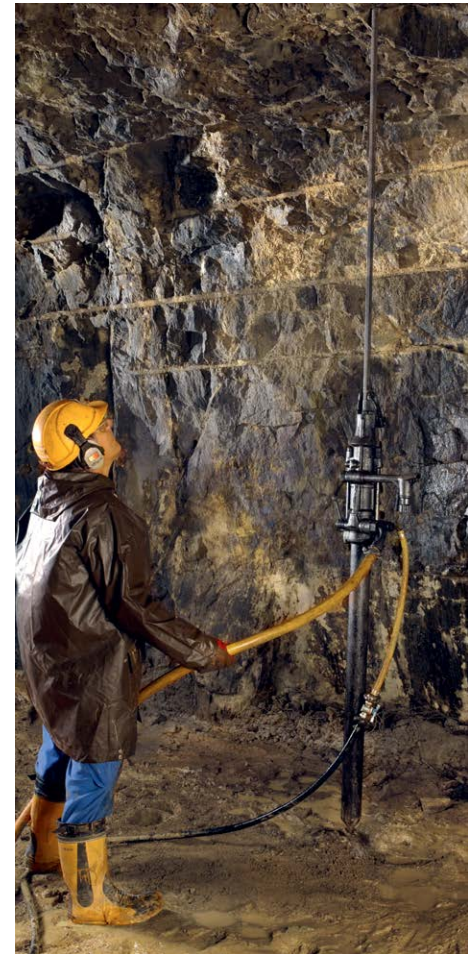


# Pneumatic rock drills – Stoppers

## Applications:

- Raise driving
- Screening

Stoppers		BBD 46WS-8
Hole range	mm	27-41
Weight	kg	40
Length retracted	mm	1650
Length extracted	mm	2620
Air consumption	l/s	90
Impact rate	bpm	3000
Piston diameter	mm	75
Stroke length	mm	45
Vibration level 3 axes (ISO 20643)	m/s <sup>2</sup>	10
Sound power level guaranteed (2000/14/EC)	Lw, dB(A)	124
Sound pressure level (ISO 11203)	Lp, r=1m	121
Part number with shank H 22x108 mm		8311 0202 11



Data at 6 bar (90 psi) air pressure

# Underground pneumatic rock drills

## Applications:

- Raise driving and bolting
- Screening

## Features:

- High quality, designed for production drilling
- Built-in water flushing



Rock drills		BBC 16W	BBC 34W <sup>1)</sup>	BBD 94W <sup>1)</sup>	BBD 94WS <sup>1)</sup>	RH 656 4W <sup>2)</sup>
Hole range	mm	27-41	27-41	27-41	27-41	27-41
Weight	kg	28,5	33,5	28	31	22
Length	mm	705	775	670	670	658
Air consumption	l/s	69	88	97	97	48
Impact rate	blows/min	2340	2280	3300	3300	2040
Piston diameter	mm	70	80	90	90	65
Stroke length	mm	55	70	45	45	59
Vibration level 3 axes (ISO 5349-2)	m/s <sup>2</sup>	16,6	20,4	15	15	21,2
Sound power level guaranteed (2000/14/EC)	Lw, dB(A)	122	127	125	125	120
Sound pressure level (ISO 11203)	Lp, r=1m	111	116	114	114	115
Part number with shank size H 22x108 mm		8311 0401 10	8311 0408 05	8311 0206 09	8311 0206 12	8311 0302 02

Data at 6 bar (90 psi) air pressure

<sup>1)</sup>Article will be phased out. Available until stock is exhausted.

<sup>2)</sup>Available only for low-regulated markets

# Pneumatic rock drills – pusher legs

## Applications:

- Underground horizontal drilling

## Features:

- High quality, designed for production drilling
- Single or double telescopic pusher legs



Pusher legs		BMT 51	ALF 71 <sup>1)</sup>	ALF 71-1 <sup>1)</sup>	ALF 72D <sup>1)</sup>	ALF 72D-1 <sup>1)</sup>	BMK 62S
Telescope		Single	Single	Single	Single	Single	Single
Suitable for rock drill:		BBC 16W, 34W	BBC 16W, 34W	BBC 16W, 34W	BBD 94W	BBD 94W	RH 656W
Feeding length	mm	1300	1300	950	1300	1200	1300
Length retracted	mm	1658	1805	1455	1970	1830	1815
Length extracted	mm	2958	3105	2405	3270	3030	3115
Weight	kg	15	14	13	19	16	17
Cylinder Bore	mm	60	70	70	70	70	53
Part number		8321 0301 01	8321 0201 94	8321 0201 95	8321 0201 80	8321 0201 81	8321 0102 02

Data at 6 bar (90 psi) air pressure

<sup>1)</sup>Article will be phased out. Available until stock is exhausted.

# Rig-mounted pneumatic rock drills

## Applications depending on weight class:

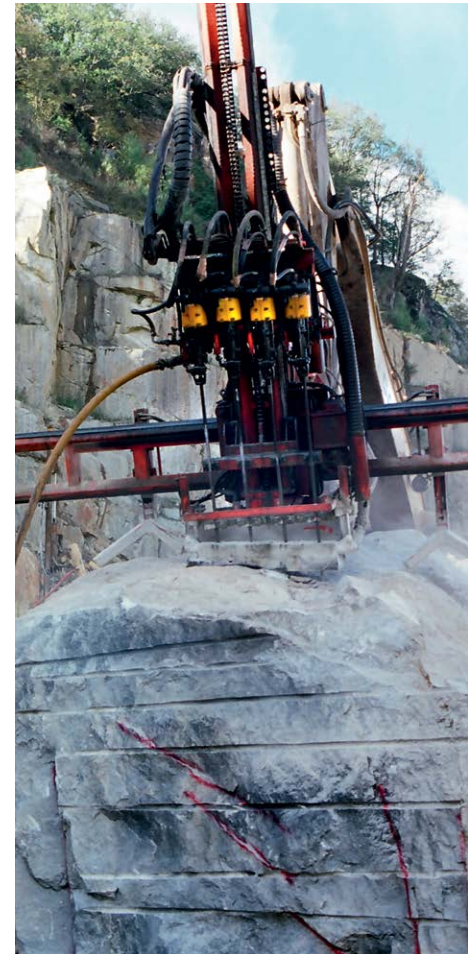
- Dimension stone industry (DSI)
- Marble and granite quarries
- Cable or chain feed drilling

## Features:

- Efficient air flushing
- Can be converted to water flushing
- Production drilling

Rig-mounted rock drills		BBD 94-DSI <sup>1)</sup>
Weight	kg	26
Length	mm	670
Air consumption	l/s	97
Impact rate	bpm	3300
Piston diameter	mm	90
Stroke length	mm	45
Vibration level 3 axes (ISO 20642)	m/s <sup>2</sup>	15
Sound power level guaranteed (2000/14/EC)	Lw, dB(A)	125
Sound pressure level (ISO 11203)	Lp, r=1m	114
Part number		8311 0206 10

<sup>1)</sup>Article will be phased out. Available until stock is exhausted.





## DIP and DOP pneumatic submersible pumps

A pneumatic pump is a great choice when failure is not an option. They're easy to use, safe and can handle almost anything you throw at them.

The DIP centrifugal pumps and DOP diaphragm pumps are designed to handle almost any environment with a minimum of maintenance. Whether your business is construction, mining or process industry, your tools sometimes aren't allowed to fail. We therefore designed them for businesses and operations where failure is not an option.

### Features:

- Safe in all environments
- Robust technology
- Not possible to overload
- Light lifting
- Simple design
- Plug & play



DIP centrifugal pumps			DIP 25	DIP 35	DIP 65	DOP 15N	DOP 15F
Max. head	m		25	35	59	59	59
Max. flow	l/min		1680	1320	660	420	420
Max. flow	m <sup>3</sup> /h		100,8	79,2	39,6	25,2	25,2
Max. air requirements	l/s		70	70	70	34	34
Weight	kg		23	23	23	31	31
Dimensions: L x W x H	mm		235 x 288 x 435	235 x 288 x 435	235 x 288 x 435	390 x 330 x 585	390 x 330 x 585
Connection thread	Fluid outlet	in	G 2 ½	G 2 ½	G 2 ½	G 2 ½	G 2 ½
	Air inlet	in	G ¾	G ¾	G ¾	G ¾	G ¾
	Air outlet	in	G 1 ½	G 1 ½	G 1 ½	-	-
Part number			8492 0103 20	8492 0103 38	8492 0106 19	8492 0101 48	8492 0101 63
Part number Kit <sup>1)</sup>			8492 0103 53	8492 0103 61	8492 0106 27	8492 0101 55	

<sup>1)</sup> For the contents of the available Kits, see page 32

## Impact wrenches and needle scalars

Our impact wrenches and needle scalars simply plug in to your compressor and let you handle the toughest jobs. Impact wrenches are suitable for material maintenance. Needle scalars are perfect for cleaning concrete before reworking it. Made of light but robust materials, with excellent ergonomics and low vibration levels, these compact tools make heavy construction work easy.



Impact wrenches		TEX 290 W	TEX 291 W	TEX 292 W
Bolt size max	mm	M13	M16	M30
Square drive size	in	3/8"	1/2"	3/4"
Torque-forward	Nm	310	710	1400
Torque-Reverse	Nm	500	1000	1500
Torque range	Nm	150-400	200-800	300-1500
Free speed	r/min	6500	7700	5500
Weight	kg	1,24	1,98	3,24
Air Consumption	l/s	17	18	27
Recc. Hose Size	mm	10	10	13
Air inlet thread	BSP	1/4"	1/4"	3/8"
Model type		Pistol handle type		
Impact		Twin hammer		
Part number		8461 0250 01	8461 0250 02	8461 0250 03

Needle scalar		TEX 01 N
Blows	Hz	40
Stroke	mm	11
Length	mm	370
Weight	kg	2,35
Air Consumption	l/s	2
Recc. Hose Size	mm	10
Air inlet thread	BSP	1/4"
Part number		8461 0250 04



## Scabblers

Working concrete has never been easier, thanks to Atlas Copco's lightweight and compact scabblers. They are equipped with tungsten carbide tipped pistons. All models have three pistons mounted in line of which the cycling occurs due to the air porting arrangements in the piston assembly.

### Applications:

- Concrete cleaning and roughening
- Keying the surface of construction joints
- Produce ornamental or contrasting finishes on
- concrete surfaces

### Features:

- Back head grip, gives in-line thrust
- Chamfered cylinder block increases visibility to the work surface



Scabblers		SBL 05	SBL 06	SBL 06 PE
Weight	kg	4,5	5,3	6,8
Length	mm	280	470	470
Number of pistons		3	3	3
Vibration level 3 axes (ISO 28927-10)	m/s <sup>2</sup>	12,8	23,1	7,1
Air consumption	l/s	13	13	13
Impact rate	bpm	2500	3000	3000
Sound pressure level (150 11203)	dB(A)	95	95	97
Hose connection	mm	12,7	12,7	12,7
Part number		8461 0250 13	8461 0250 11	8461 0250 12

# Tampers

Our pneumatic tampers are your go-to tool for compacting jobs, even for tough soil types like clay. Lightweight and ergonomic, these powerful backfill tampers can be operated by a single person.

## Applications:

- Compact soil around foundations and other structures
- Compacting backfill in trenches

## Features:

- Maximum power – slow powerful blows efficiently and quickly compact all types of backfill, including clay and soils containing high percentages of finely crushed or powdered material
- Heat-treated cylinder and chrome plated piston significantly extend tool life
- Aluminum butt held with clamp screw for quick, easy replacement
- Exhaust deflector directs air, moisture and oil away from the operator
- Integral oiler for continuous lubrication

Tampers		TAM 14	TAM 19
Weight	kg	13,6	19
Length	mm	1320	1270
Body diameter	mm	71,4	98,4
Butt size	mm	127	158,8
Air consumption	l/s	8,4	13
impact frequency	bpm	800	780
Vibration level 3 axes (I SO 20643)	m/s <sup>2</sup>	32,3	44,8
Sound pressure level (150 11203)	dB(A)	95	94
Hose connection	mm	12,7	19
Part number		8461 0250 14	8461 0250 15



## Chipping hammer Kits

Kit Item Number	Kit Description	Component in Kit	Component Description
8461 0208 02	TEX 03 PS Kit	3083 3220 00	Moil point hex 19 x 50 mm
		3083 3222 00	Narrow chisel hex 19 x 50 mm
		3310 1206 00	Storage box
		3310 1624 00	Product label
		8099 0202 40	Breaker and hammer air-oil 250ml
		8461 0208 01	TEX 03 PS h19 x 50
		9030 2043 00	Rubber hose TEX 3/05 (PM)
8461 0219 02	TEX 05 P Kit	3083 3220 00	Moil point hex 19 x 50 mm
		3083 3222 00	Narrow chisel hex 19 x 50 mm
		3310 1206 00	Storage box
		8099 0202 40	Breaker and hammer air-oil 250ml
		8461 0219 00	TEX 05 P h19 x 50
		9030 2043 00	Rubber hose TEX 3/05 (PM)
8381 0200 33	TEX 05 P Kit	3083 3220 00	Moil point hex 19 x 50 mm
		3083 3222 00	Narrow chisel hex 19 x 50 mm
		8461 0219 00	TEX 05 P h19 x 50
8381 0200 40	TEX 12 PS Kit	3083 3242 00	Moil point hex 22 x 82.5 mm
		3083 3244 00	Narrow chisel hex 22 x 82.5 mm
		8461 0211 13	TEX 12 PS h22 x 82.5
8381 0200 41	TEX 12 PS KL Kit	3083 3242 00	Moil point hex 22 x 82.5 mm
		3083 3244 00	Narrow chisel hex 22 x 82.5 mm
		8461 0211 12	TEX 12 PS KL, 22x82.5

## Breaker Kits

Kit Item Number	Kit Description	Component in Kit	Component Description
8381 0200 56	TEX P60 S Kit	3083 3206 00	Moil point hex 32 x 160 mm
		3083 3209 00	Narrow chisel hex 32 x 160 mm
		8099 0202 36	Breaker and hammer air-oil 1l
		8461 0227 23	TEX P60S, 32x160
		3083 3206 00	Moil point hex 32 x 160 mm
8381 0200 58	TEX P90 S Kit	3083 3209 00	Narrow chisel hex 32 x 160 mm
		8099 0202 36	Breaker and hammer air-oil 1l
		8461 0228 23	TEX P90S, 32x160
		3083 3206 00	Moil point hex 32 x 160 mm



## DIP and DOP pump Kits

Kit Item Number	Kit Description	Component in Kit	Component Description
8492 0103 53	DIP 25 Kit	8492 0103 20	DIP 25 (1x)
		3330 0034 91	Outlet hose 76 mm x 25 m incl. fittings (1x)
		8202 5102 39	Lubricator CLG-30 (black) (1x)
		3330 0032 91	Non-return valve with pipe. Thread G 1 1/2 A (1x)
8492 0103 61	DIP 35 Kit	8492 0103 38	DIP 35 (1x)
		4950 0191 90	Outlet hose 63 mm x 32 m incl. fittings (1x)
		8202 5102 39	Lubricator CLG-30 (black) (1x)
		3330 0032 91	Non-return valve with pipe. Thread G 1 1/2 A (1x)
8492 0106 27	DIP 65 Kit	8492 0106 19	DIP 65 (1x)
		4950 0191 90	Outlet hose 63 mm x 32 m incl. fittings (2x)
		8202 5102 39	Lubricator CLG-30 (black) (1x)
		3330 0032 91	Non-return valve with pipe. Thread G 1 1/2 A (1x)
8492 0101 55	DOP 15 N Kit	8492 0101 48	DOP 15 N
		4950 0191 90	Outlet hose 63 mm x 32 m incl. fittings (1x)
		8202 5102 39	Lubricator CLG-30 (black) (1x)





## Nomenclature – Handheld Pneumatic Tools

ABB.	DESCRIPTION
H	Hexagonal Bushings
P	Pneumatic ( Non Silenced)
S	Silenced Version
E	Ergonomic Handle Version
KL	Kick Latch Retainer
R	Round Bushings
D	D handle
C	Clockwise Rotation
T	T Handle
L	Latch Retainer
US	United States of America Model only
EXT	External Trigger
SVR	Silenced & Vibration Reduced Model
DSI	Dimension Stone Industry

ABB.	DESCRIPTION
CH	Chipping Hammer Handle
W	Water Flushing System
SPDR	Spike Driver
SQ	Square Bushings
RR	Reverse Rotation
A	Rotation on/off
C	Drilling Only
F	Rotation on/off Spline Coupling
Dry	Only Air flushing
Wet	Wet Flushing

# Handheld hydraulic tools



## Handheld hydraulic tools

Hydraulic tools pack lots of power in a small machine: perfect if you find yourself working in cramped spaces or overhead. You'll also find our hydraulic tools tackling emergency interventions in high dense traffic areas and airports .

Clever design, with few moving parts that are continuously lubricated, means minimal wear and little maintenance. Their closed-loop design keeps out dirt and moisture, so no job is too rough for these tools.

Pair your hydraulic breaker up with a compact power pack, available in fuel and electric versions and you are ready to take on any job.

- Flexible and compact system
- Excellent power-to-weight ratio
- Suitable for indoor use, in any condition and even under water
- Continuous lubrication for minimal wear
- Few parts and completely closed-loop



### Powerpack and Tools Selection Guide

Powerpack		LP 9-20P	LP 13-30P	GP 18-30	GP 18 multiflow	LP 9-20E
Engine		9 HP	13 HP	18 HP	18 HP	9 HP
EHTMA Class		C	C/D	C/D	B/C/D/E	C
Breaker	LH11	x			x	x
	LH190E	x			x	x
	LH230E	x	x	x	x	x
	LH280E	x	x	x	x	x
	LH400E		x		x	
Core Drills	LCD500/LCD1500	x	x	x	x	x
	LS14	x	x	x	x	x
Cut-off Saw	LS16	x	x	x	x	x
	LPD-LD-T	x		x	x	x
Post Drivers	LPD-T/RV	x	x	x	x	x
	LPD-HD-T/RV	x	x	x	x	
Post Puller	LPP 10 HD	x	x	x	x	x

# Hydraulic hammer

## Applications:

- Breaking light concrete and brickwork

## Features:

- Low noise levels
- Slim design
- High power to weight ratio
- No exhaust or emission
- No additional lubrication needed
- No freezing



Hammer and breakers		LH 11
Weight	kg	15,5
Length	mm	650
Oil flow	l/min	20
Working pressure	bar	80-100
Max back pressure	bar	10
Impact rate	blows/min	2300
Vibration level 3 axes (ISO 28927-10)	m/s <sup>2</sup>	16,5
Sound power level guaranteed (2000/14/EC)	Lw, dB(A)	105
Sound pressure level (ISO 11203)	Lp, r=1m	93
EHTMA class		C
Part number with shank H 22x82,5 mm		1801 1741 18



# Hydraulic breakers

## Applications:

- Medium and hard materials like asphalt and concrete

## Features:

- Vibration reduced
- Vibro-damping chisel bushing
- Low noise levels
- Slim design
- High power to weight ratio



Breakers		LH 190 E	LH 230 E	LH 280 E	LH 400 E
Weight	kg	25	28	32,5	39
Length	mm	650	735	765	765
Oil flow	l/min	20	20-30	20-30	30-40
Working pressure	bar	95-110	105-125	110-125	110-125
Max back pressure	bar	10	15	15	15
Impact rate	blows/min	1400	1500-2100	1350-1750	1150-1600
Vibration level 3 axes (ISO 28927-10)	m/s <sup>2</sup>	5	4,6	4,6	5,4
Sound power level guaranteed (2000/14/EC)	Lw, dB(A)	106	107	107	106
Sound pressure level (ISO 11203)	Lp, r=1m	93	94	95	93
EHTMA class		C	C/D	C/D	D/E
Part number with shank H 25x108 mm		1801 3443 41	1801 3543 51	-	-
Part number with shank H 28x152 mm		1801 3443 42	1801 3543 52	1801 3643 60	1801 3743 68
Part number with shank H 28x160 mm		1801 3443 43	1801 3543 53	1801 3643 61	1801 3743 69
Part number with shank H 32x152 mm		1801 3443 44	1801 3543 54	1801 3643 62	1801 3743 70
Part number with shank H 32x160 mm		1801 3443 45	1801 3543 17 1801 3543 78 <sup>1)</sup>	1801 3643 63	1801 3743 71

<sup>1)</sup> Article number 1801354378 is standard restrained to 20l/min (instead of article 1801354317 at 30l/min). Both part numbers are suitable to be used at 20 and 30 l/min after adjustments.

# Hydraulic core drills

## Applications:

- Safe handheld drilling in reinforced concrete and asphalt up to 200 mm diameter in confined spaces, for ventilation, heating, gas piping and other installations
- Works efficiently also in underwater applications

## Features:

- High power to weight ratio
- Low vibrations
- Low kick-back
- Hydraulic torque control
- Fits in standard drill stands
- Closed hydraulic circuit
- Comes in carrying steel case as standard



Core drills		LCD 500	LCD 1500
Weight including hoses	kg	9,5	9
Oil flow rate	l/min	20-30	20-30
Length without drill	mm	414	406
Working pressure	bar	60-120	60-120
Revolutions	rpm	600-900	1500-2250
Drill diameter	mm	50-202	12-75
Thread female (drive) <sup>1)</sup>		½" BSP	½" BSP
Vibration level 3 axes (ISO 28927-5)	m/s <sup>2</sup>	3,1	2,7
Sound pressure level (ISO 11203)	Lp, r=1m	<70	<70
EHTMA class		C/D	C/D
Part number		1806 1014 38	1806 1014 39

<sup>1)</sup>1/2" BSP male x 1 1/4 UNC male drive adaptor included for use of larger diameter core bits.



# Hydraulic cut-off saws

## Applications:

- Cutting depth of 133-160 mm
- Works in dust, slurry and underwater
- Used for cutting:
  - Concrete, reinforced concrete
  - Asphalt
  - Steel
- Used with:
  - Dry and wet diamond discs
  - Abrasive steel cutting discs

## Features:

- Simple design with direct drive motor
- Open visible cutting face
- Good power-to-weight ratio
- Compact and slim design



Cut-off saws		LS 14	LS 16
Weight including hoses	kg	12	13
Oil flow	l/min	20-30	20-40
Maximum pressure	bar	172	172
Revolutions	rpm	2500-4000	2000-4000
Speed	m/s	46-75	42-85
Disc size	mm	355	405
Arbor size	mm	25,4	25,4
Cutting depth	mm	133	160
Vibration level 3 axes (ISO 28927-8) 20 lpm	m/s <sup>2</sup>	4,9	4,9
Sound power level guaranteed (2000/14/EC)	Lw, dB(A)	108	116
Sound pressure level (ISO 11203)	Lp, r=1m	94	102
EHTMA class		C/D	C/D/E
Part number		1809 0140 01	1809 0160 00

Also available: LSC cart for cut-off saw, part number 1809001001



# Hydraulic post and ground rod drivers

## Applications:

- Drives up to 150 mm diameter poles
- For driving of:
  - Road barriers
  - Tubes / profiles
  - Signposts
  - Fences
  - Anchors
  - Ground rod

## Features:

- Available with built-in on/off valve or hose mounted remote on/off valve

## Options:

- Adaptors driving heads
- Kits



Post drivers		LPD-LD-T	LPD-T	LPD-RV	LPD-HD-T	LPD-HD-RV
Activation type		By trigger lever	By trigger lever	By remote valve	By trigger lever	By remote valve
Hydraulic system		Open centre	Open centre	Open- or closed-centre	Open centre	Open- or closed-centre
Weight including hoses	kg	17,5	32	33	39	40
Driving capacity <sup>1)</sup>	mm	10-60	40-100	40-100	70-150	70-150
Working pressure	bar	80-100	105-140	105-140	105-125	105-125
Oil flow	l/min	20	20-30	20-30	28-40	28-40
Impact rate	blows/ min	2300 (20l/min)	1680 (30l/min)	1680 (30l/min)	1320 (30l/min)	1320 (30l/min)
Hydraulic ports		½" BSP	½" BSP	½" BSP	½" BSP	½" BSP
Vibration level 3 axes (ISO 28927-10) 20 lpm	m/s <sup>2</sup>	17,5	12,8	-	-	-
Sound power level guaranteed (2000/14/EC)	Lw, dB(A)	116	115	115	118	118
Sound pressure level (ISO 11203)	Lp, r=1m	102	102	102	105	105
EHTMA class		C	C/D	C/D	D/E	D/E
Part number		1801 3940 06	1801 4040 02	1801 4050 02	1801 4140 00	1801 4150 00

<sup>1)</sup> Depending on ground condition

# Hydraulic post puller

## Applications:

- For removal of any pole, steel beam or tube with diameters up to 200 mm
- For removing of:
  - Wooden posts
  - Steel posts (incl IPE, HPE and UPE profile)
  - Round/square steel tubes
  - Fence posts
  - Anchors

## Features:

- Integrated jaw
- Automatic chain tightening clamp
- Total pulling force up to 10 tons



Post puller		LPP 10 HD
Weight	kg	60
Oil flow	l/min	20-40
Max. working pressure	bar	172
Max. back pressure	bar	30
Lift capacity per stroke	mm	12-200
Pulling force	kg	6000
Full pulling force	kg	10000
EHTMA class		C/D/E
Part number		1801 8100 03 <sup>1)</sup>

<sup>1)</sup>Lever Kit, part number 3371 8101 48

# Hydraulic power packs

## Features:

- Portable, compact and lightweight
- High efficiency, low noise and low fuel consumption thanks to Power On Demand function (available with selected models only)
- Low maintenance, long lifetime – moving parts move in a closed lubricated circuit
- Protective steel frame with foldable handles
- Lifting eye and cross lifting bar
- No exhaust or emission from the tools – power pack with engine can be placed away from tool
- Large return filter and replacement indicator
- Thermostatically-controlled oil cooler



Power packs		LP 9-20 P <sup>1)</sup>	LP 13-30 P <sup>1)</sup>	GP 18-30	GP 18 multiflow	LP 9-20 E
Fuel		Petrol	Petrol	Petrol	Petrol	Electric
Engine		9 HP Honda	13 HP Honda	18 HP B&S Vanguard	18 HP B&S Vanguard	5,5 kW/ 3x400 V/16A
Dry weight	kg	77	102	130	135	87
Dimensions (LxWxH)	mm	630x530x640	745x600x705	930x603x765	930x603x765	630x530x640
Oil flow	l/min	20	20-30	20-30	15-20-30-40	20
Maximum pressure	bar	150	150	172	145	150
Fuel capacity	l	6	6,5	8,5	8,5	-
Hose included		YES	YES	NO	NO	NO
Power on Demand (POD)		YES	YES	NO	NO	NO
Electric start		NO	NO	YES	YES	YES
Sound power level guaranteed (2000/14/EC)	Lw, dB(A)	101	101	101	101	96
Sound pressure level (ISO 11203)	Lp, r=1m	87	89	89	89	82
EHTMA class		C	C/D	C/D	B, C, D & E	C
Part number		1807 0080 50	1807 0110 32	1807 8000 26	1807 8000 09	1807 0080 52

<sup>1)</sup> A 7 m extension twin-hose comes as standard with LP 9-20 P, LP 13-30 P

## Nomenclature – Handheld hydraulics tools

ABB.	DESCRIPTION
H	Hexagonal Bushings
S	Silenced Version
E	Ergonomic Handle Version
T	External Trigger
RV	Remote Valve operated
LD	Light Duty
HD	Heavy Duty

## Notes

---

---

---

---

---

---

---

---

---

---

---

---

---

---

---

---

---

---

---

---

---

---

---



# Handheld motor drill and breakers





## Handheld motor drill and breakers

A motor-driven tool is a matter of grab and go. This completely autonomous system is perfect for remote locations and hard-to-get places. Forget hoses, cables or compressors: Atlas Copco's Cobra tools are immediately ready for action.

'HAPS' technology minimizes vibration, so you can get more work done in a day, in a safe way. Noise and emissions are also kept to a minimum.

### Our three Cobra models:

- **PROe**: a heavy hitter that clocks up an incredible 60 joules at the tool tip
- **TTe**: specifically designed for tie tamping. It works with a relatively high blow frequency and the impact energy has been optimized to prevent breaking the ballast.
- **Combi**: The Cobra combi is not only a breaker, it doubles as a powerful drill. It has a built-in flushing device, which makes this the perfect tool for drilling hard materials. Do you know another tool that drills at 30 cm per minute through solid granite? And to a depth of up to 6 meters?



## Motor drill and breakers (Cobra range)

### Applications:

- Drilling and breaking (Cobra Combi)
- Work on remote sites
- Breaking concrete
- Cutting asphalt
- Tamping and compacting
- Driving spikes, tubes, poles, ground rods and probes
- Digging ditches and holes
- Tie tamping (Cobra TTe)

### Features:

- Easy to transport
- Quick set-up time
- 'HAPS' Hand and Arm Protection System
- Low emissions
- Low noise

### Cobra PROe and TTe

- Adjustable handles
- Central oil lubrication
- High impact power

### Cobra PROe, TTe and Combi

- All models fully in compliance with latest American EPA, Phase 3 emission standard and related EU emission standards



Cobra petrol breakers		PROe	TTe	Combi/Pionjär
Type		breaker	tie-tamper	Breaker and drill
Weight	kg	24-25	23-24	25
Length	mm	877-927	877-927	732
Depth	mm	358	358	281
Width across handles	mm	623	623	585
Impact energy	Joules	65	40	22-25
Blow frequency	bpm	1440	1620	2700
Penetration rate w 34 mm drill bit	mm/min	-	-	200-300
Max drilling depth	m	-	-	6
Drill rotation speed	rpm	-	-	250
Engine				
Engine type		1 cylinder, 2-stroke with carburetor		
Cylinder displacement	cc	90	90	185
Power	kW	2	1.5	2
Cooling system		Fan cooled		
Starter system		Recoil starter		Magnapull
Fuel type		Petrol (gasoline), 90-100 octane unleaded		
Fuel capacity	l	1	1	1.2
Fuel mixture	%	2	2	2
Fuel consumption	l/hour	0.85	0.8	1,3-1,5
Oil-type (Atlas Copco)		2-stroke oil or similar		
Alkylate		Yes		No

Vibration and sound		PROe	TTe	Combi/Pionjär
Vibration level 3 axes (ISO 28927-10)	m/s <sup>2</sup>	3,3	3,8	5,8 (breaking), 9,3 (drilling)
Sound power level guaranteed (2000/14/EC)	Lw, dB(A)	109	109	108
Sound pressure level (ISO 11203)	Lp, r=1m, dB(A)	97	97	95

Full dimension details are available in the product's Safety and Operating Instructions (Part number: 9800 0955 90).

Shank size (H)	PROe	TTe	Combi/Pionjär
22 x 108 mm (Cobra Combi in military green version)	-	-	8318 0800 13 <sup>1)</sup>
22 x 108 mm	-	-	8318 0800 08 <sup>1)</sup>
25 x 108 mm	8318 0701 09	8318 0701 19	-
28 x 160 mm	8318 0701 05	8318 0701 15	-
28 x 160 mm (heavy duty metal chuck bushing)	8318 0703 10	-	-
32 x 160 mm	8318 0701 01	8318 0701 11 <sup>2)</sup>	-
32 x 160 mm (heavy duty metal chuck bushing)	8318 0703 00	-	-
32 x 160 mm (China only heavy duty metal chuck bushing)	8318 0703 06	8318 0701 22	-

<sup>1)</sup>For the complete list of included accessories, see page 50

<sup>2)</sup>Also available as Kit with article number 8318 0700 98. For the content, see page 50

## Accessories list for Cobra Combi and Pionjär

Kit Item Number	Kit Description	Component	Component Description
8318 0800 08	Cobra Combi		Cobra Combi
		9234 0028 72	Plywood box
		0714 0434 70	Drill Steel
		3083 3230 00	Narrow Chisel
		9234 0009 05	Tool bag complete:
		9238 2710 20	Tool bag
		9234 0009 04	SPARK PLUG
		9238 2714 00	SOCKET WRENCH
		9232 2405 10	STARTER ROPE
		9238 2718 40	OIL MEASURE
		9238 2701 00	Cleaning needle
		9238 2707 90	Template
			Grinding template
		9234 0008 97	Petrol can
		9238 2743 50	2-stroke oil

Kit Item Number	Kit Description	Component	Component Description
8318 0800 13	Cobra Pionjär		Cobra Pionjär
		9234 0138 72	Camouflage green reinforced plywood box
		0714 0434 70	Drill Steel
		3083 3230 00	Narrow Chisel
		9238 2710 20	Tool bag complete:
		9234 0009 04	SPARK PLUG
		9238 2714 00	SOCKET WRENCH
		9232 2405 10	STARTER ROPE
		9238 2718 40	OIL MEASURE
		9238 2701 00	Cleaning needle
		9238 2707 90	Template
			Grinding template
		9234 0008 97	Petrol can
		9238 2743 50	2-stroke oil

## Cobra Kits

Kit Item Number	Kit Description	Component in Kit	Component Description
8318 0700 98	Cobra TTe Kit 32x160	8318 0701 11	Cobra TTe 32X160
		3083 3217 00	Tie tamper hex 32 x 160 mm
		9234 0009 91	Transport box Cobra Pro/TT

## Notes

---

---

---

---

---

---

---

---

---

---

---

---

---

---

---

---

---

---

---

---

---

---

---

---

---

---

---

---

---

---

# Power Technique Solutions Portfolio

Atlas Copco's Power Technique Business Area has a forward-thinking philosophy. For us, creating customer value is all about anticipating and exceeding your future needs – while never compromising our environmental principles. Looking ahead and staying ahead is the only way we can ensure we are your long term partner.

## Air compressors

### Ready to go

- 1-5 m<sup>3</sup>/min
- 7-12 bar



### Versatility

- 5,5-22 m<sup>3</sup>/min
- 7-20 bar

\*Diesel and electric options available



### Productivity partner

- 19-116 m<sup>3</sup>/min
- 10-345 bar



## Handheld tools

### Pneumatic tools

- Breakers (2,5 – 40 kg)
- Rockdrills (5 – 25 kg)
- Additional Air Tools
- Underground Rock Drills



### Hydraulic tools

- Breakers (11 – 40 kg)
- Additional Hydraulic Tools
- Powerpacks



### Petrol engine driven tools

- Breakers & Tie Tampers (25 kg)
- Combi Drills (23 Kg)



### Generators

- Portable
- Mobile
- Industrial



\*Multiple configurations available to produce power for any size application

### Light towers

- Diesel LED and MH
- Electric LED
- Battery LED



### Dewatering pumps

- Submersible
- Surface
- Small portable

\*Diesel and electric options available



Photos and illustrations contained herein might depict products with optional and/or extra components which are not included with the standard version of the product and, therefore, are not included in a purchase of such product unless the customer specifically purchases such optional/extra components. We reserve the right to change the specifications and design of products described in this literature without notice. Not all products are available in all markets.

**Atlas Copco**

Atlas Copco Power Technique  
[www.atlascopco.com/ptba](http://www.atlascopco.com/ptba)