

Atlas Copco



Atlas Copco Flow Series

atlascopco.com

We are driven by innovation

Best in class performance

- Up to 82% pump efficiency at B.E.P. for more pumping with same required energy
- Reduced pump shaft speed for improved NPSHR and reduced wear of pump parts
- 50cfm vacuum pump capacity to prime faster and get the job done quicker
- Unique enclosed impeller design with deflector vanes keeps Seal always clean and reduces wear for long lasting performance
- High fuel efficiency (FT4)



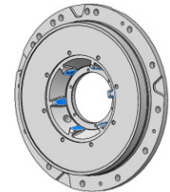
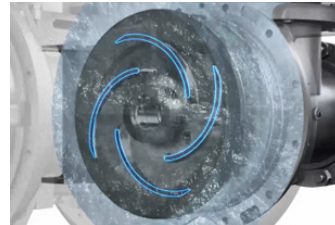
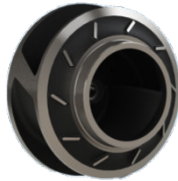
**UNIQUE
DEFLECTOR
VANES**



**3 TIMES
LONGER
SEAL LIFE**



**82%
UP TO
EFFICIENCY
AT B.E.P.**



We focus on creating partnerships

A new level of Serviceability

- Service time reduction with the Atlas Copco SAIL Solution the revolutionary cartridge seal
- Bolted wear ring for fast replacement and no special tool requirement
- Patented swing door (except F1212) to access the pump within minutes
- Large doors to access all service points
- Fluid drain points for save and trouble free service

**UNDER
60
MINUTES
SERVICE TIME**



**HINGE
DOOR
3 MIN
CLEAN-UP AND RESTART**

**UP TO
30%
REDUCED
M.T.T.R.**



SAIL Solution

We deliver sustainable value

Technology that creates a difference

- All Info a QR Code Scan Away! – Power Connect!
- Digitally connected - Fleetlink
- Cross-linked PE fuel cell – No oxidation inside the tank and safe for life

Rust free
polyethylene fuel
tank



Power
connect a
scan away



Mechanical Seal Patent and Trademark. Products - PAC H and PAC F.

- S** Semi Cartridge Seal Serviceability 
- A** Adjustable Ring Performance 
- I** Integrated oil bath Lifespan 
- L** Leakage Detection Port Safe and secured 



Atlas Copco Flow series



HEAVY DUTY VACUUM PUMP

Provides high performance priming result with all media

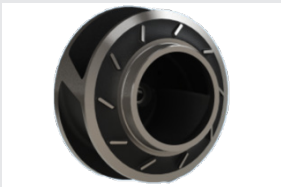


SUPERIOR SERVICEABILITY

Reduce M.T.T.R

INTEGRATED OIL BATH

Extended dry running capability



UNIQUE ENCLOSED IMPELLER DEFLECTOR VANES

Innovative design to extend Seal life and reduce wear

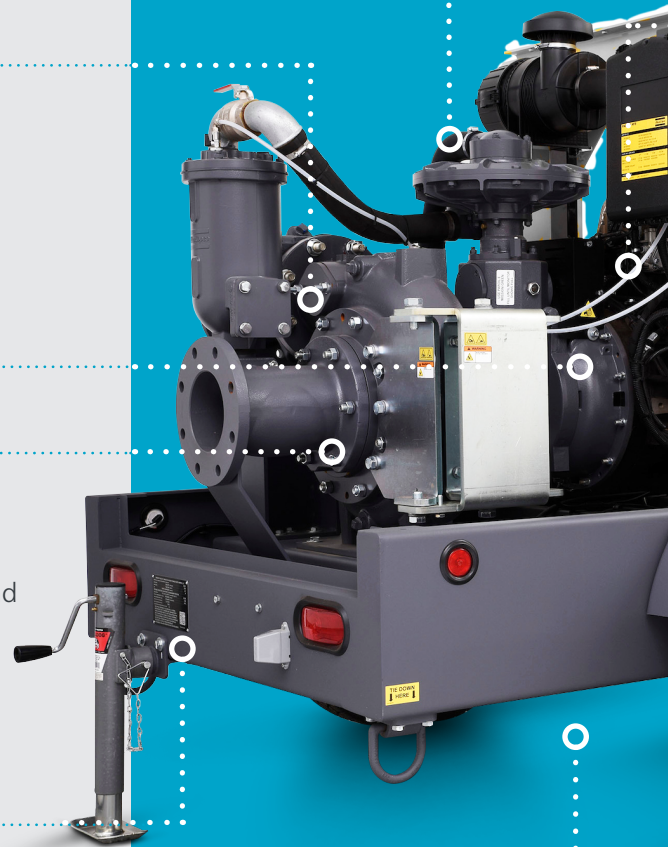
POWER CONNECT

Accessible through QR Code



EASY DRAIN ACCESS FOR PUMP

Easy access and maintenance



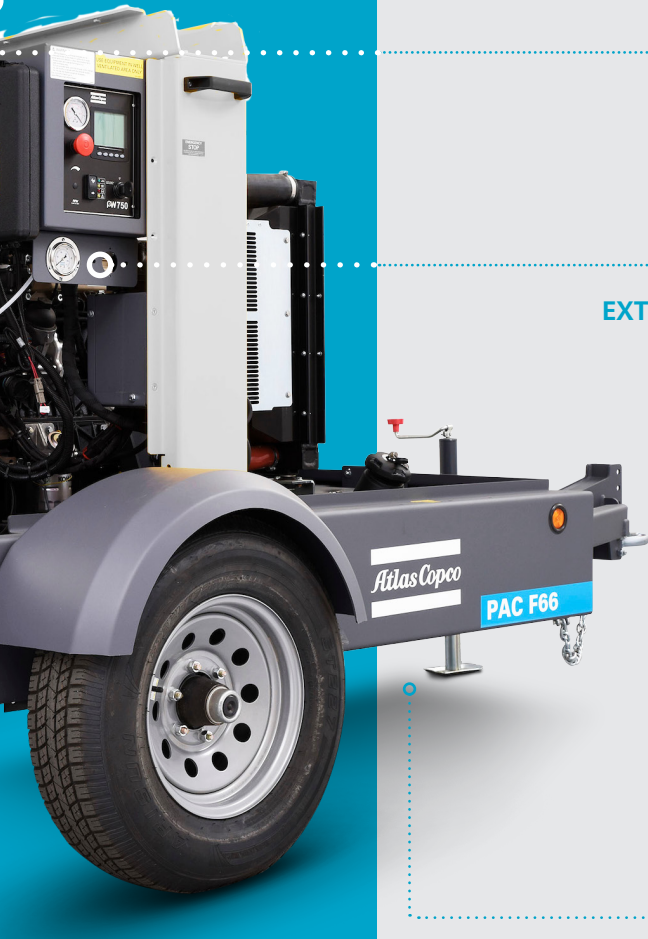
UPTO
30%
REDUCED
M.T.T.R.



SAIL Solution

**3 TIMES
LONGER
SEAL LIFE**





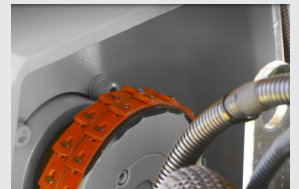
INTEGRATED LIFTING HOOK / LUG

Simple access and safe lifting



LINK BELT DESIGN

Quick maintenance



EXTERNAL E-STOP AND PRESSURE GAUGES

Protected and always in control



CROSS-LINKED PE FUEL CELL

No tank oxidation and safe

MAX FLOW ⇒  ⇒
UP TO **9,000 USgpm**

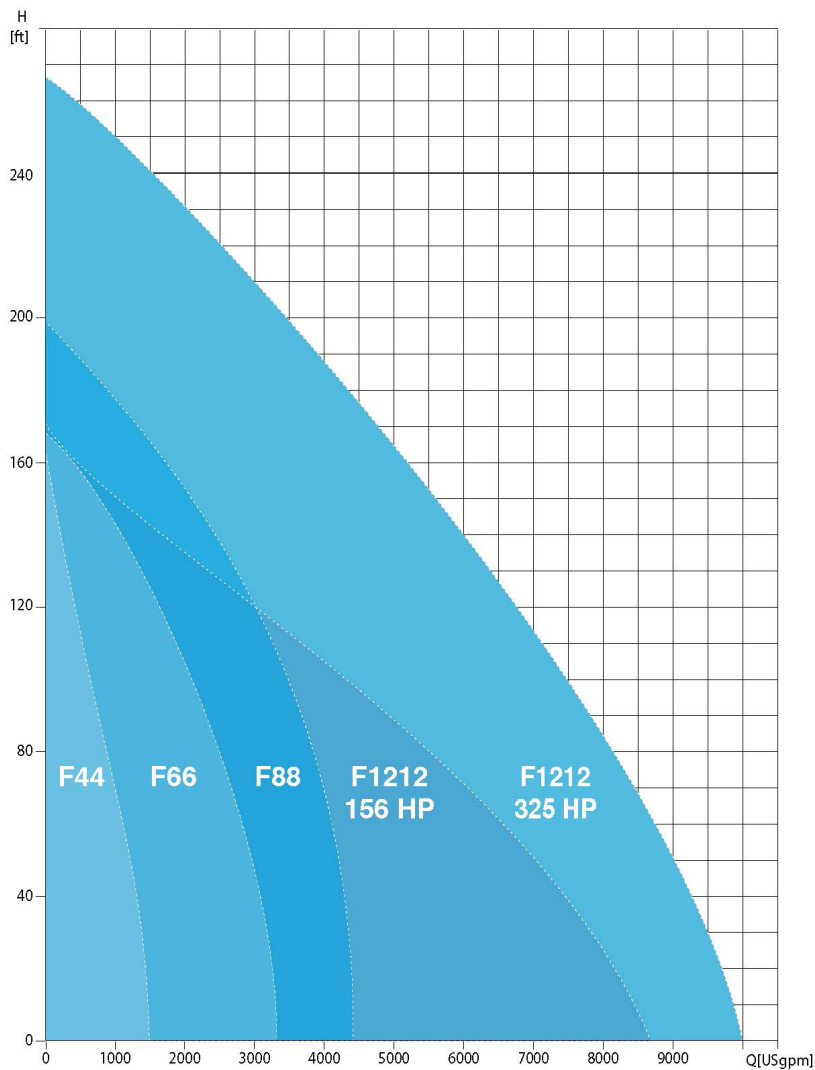
MAX HEAD UP ↑ 
TO **269 FT**

PAC Flow series technical data

Specifications		PAC F44	PAC F66 PAS F66	PAC F88 PAS F88	PAC F1212 JD-S 156 325 HP
Max. head	ft	152	166	200 195	153 269
Max. capacity	Us gpm	1,320	2,640	3,950 3,750	7,210 9,000
Suction flange size	in	4	6	8	12
Discharge flange size	in	4	6	8	12
Max. solids handling	in	3	3	3	3.5
Best efficiency point	%	73.5	79 76	82 80	74
Engine Make		Kohler	Kohler	John Deere	John Deere
Emission compliance		FT4	FT4	FT4	FT4
Max. engine power	HP	49	74	125	156 325
Max. operating speed	rpm	2,100	1800	2000	1900** 1750
Max. fuel autonomy	h	50	25.7	18.5	25.6 8.8

**Engine Speed

Composite Pump Curve



Power Technique Solutions Portfolio

Atlas Copco's Power Technique Business Area has a forward-thinking philosophy. For us, creating customer value is all about anticipating and exceeding your future needs – while never compromising our environmental principles. Looking ahead and staying ahead is the only way we can ensure we are your long term partner.

Air compressors

Ready to go



- 95-250 cfm
- 58-150 psi

Versatility



- 400-900 cfm
- 58-200 psi
- *Diesel and electric options available

Productivity partner



- 950-1800 cfm
- 100-508 psi
- *1000-5000 psi with Boosters

Generators

Portable



- 1.6 - 6.5 kVA

Mobile



- 25-1450* kVA

Energy Storage System



- 250-500* kVA



- 30 - 40* kVA

Dewatering pumps

Electric submersible



- up to 4,780 GPM

Surface Pumps



- up to 9,100 GPM

Light towers

LED



- up to 31,000 sqft of light coverage

NOTE:
See individual product reference sheets for full performance details.

Photos and illustrations contained herein might depict products with optional and/or extra components which are not included with the standard version of the product and, therefore, are not included in a purchase of such product unless the customer specifically purchases such optional/extra components. We reserve the right to change the specifications and design of products described in this literature without notice. Not all products are available in all markets.

Atlas Copco

Atlas Copco Power Technique
atlascopco.com/ptba

