

The Atlas Copco logo is positioned in the top right corner of the page. It consists of the company name "Atlas Copco" in a white, serif font, centered between two horizontal white bars. The background of the entire page is a photograph of a large, five-bladed propeller, likely for a ship, set against a dark red background. The propeller is illuminated from the side, highlighting its metallic texture and curved blades. In the bottom right corner, a small, dark area shows the silhouettes of several people standing in a large, dimly lit industrial space, possibly a ship's hull or a large factory.A large, semi-transparent blue triangle is overlaid on the bottom left portion of the image. Inside this triangle, there is a white technical drawing of a propeller hub and shaft assembly. The drawing includes various dimension lines and numerical values, such as "1380 (Ø4.3)", "1630 (Ø4.2)", "Ø10", "Ø12", "Ø14", "Ø16", "Ø18", "Ø20", "Ø22", "Ø24", "Ø26", "Ø28", "Ø30", "Ø32", "Ø34", "Ø36", "Ø38", "Ø40", "Ø42", "Ø44", "Ø46", "Ø48", "Ø50", "Ø52", "Ø54", "Ø56", "Ø58", "Ø60", "Ø62", "Ø64", "Ø66", "Ø68", "Ø70", "Ø72", "Ø74", "Ø76", "Ø78", "Ø80", "Ø82", "Ø84", "Ø86", "Ø88", "Ø90", "Ø92", "Ø94", "Ø96", "Ø98", "Ø100".

LNG fuel systems

Gas supply solutions for
Marine applications

Atlas Copco Gas and Process

Atlas Copco Gas and Process LNG fuel supply systems

World-class technology Superior performance

As the world of transportation looks to LNG to deliver a low cost and environmentally responsible source of fuel, they are looking to Atlas Copco Gas and Process to engineer new solutions for fuel delivery. With decades of experience providing fuel systems on LNG carriers, combined with the broadest portfolio of compressor technologies, Atlas Copco Gas and Process is now offering fuel compression system for today's gas-driven engines and generators.

Complete system needs

Atlas Copco Gas and Process can provide solutions to all of your gas handling needs, from retrofitting an existing vessel to commissioning a new build. We offer a wide range of equipment, including: LNG fuel compressors, vapor return blowers, air systems, inert gas systems, simplified controls, along with the needed heat exchangers, valves and other ancillary equipment.

Tailored solutions

Whether it is a LNG Carrier or a LNG fuel system, the volumes of Boil Off Gas (BOG) have decreased. Our gas screw compressors are designed to work efficiently with these systems.

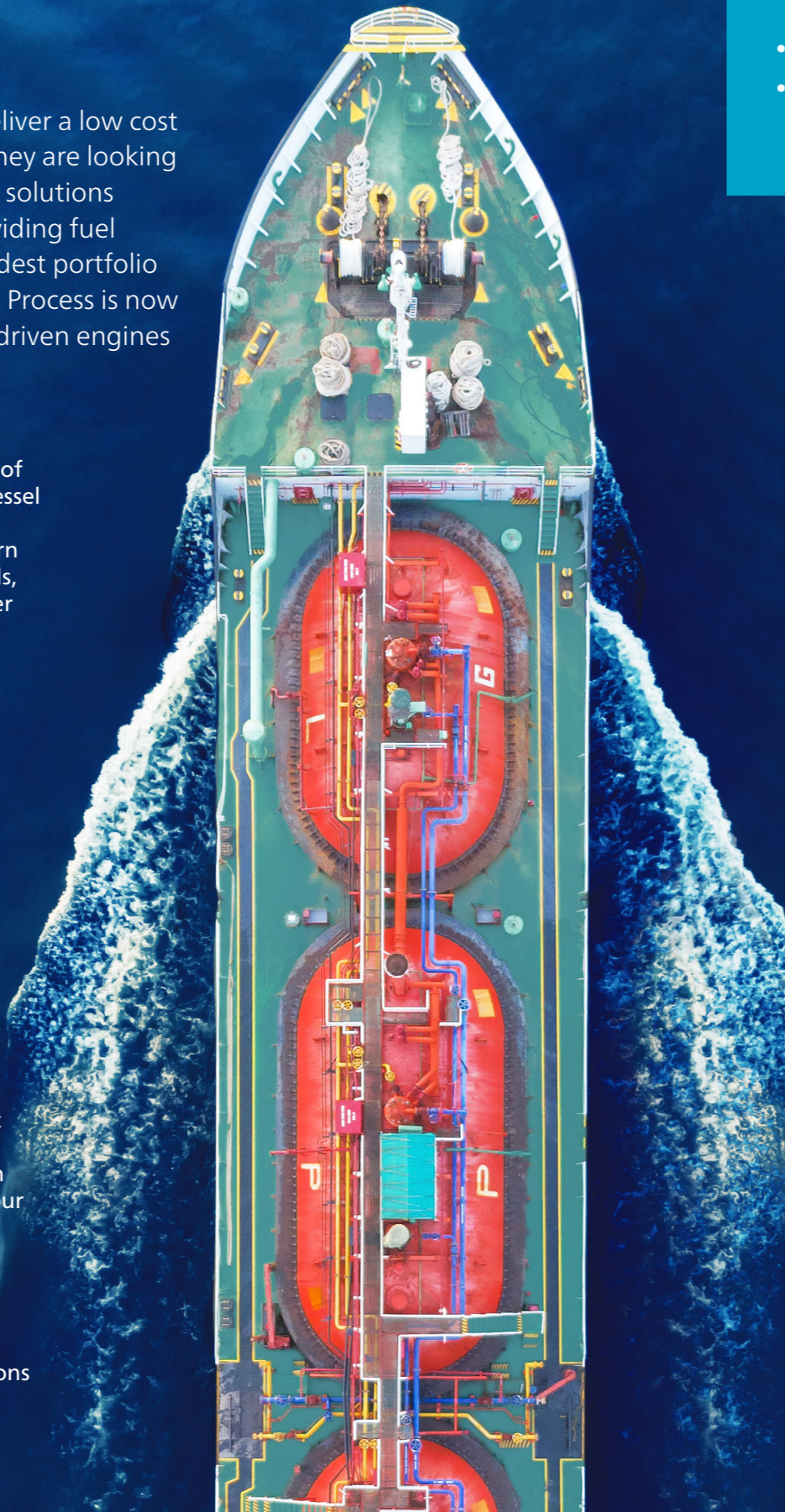
Our oil-free GZ compressor series is designed to supply engines with discharge pressure ranging from 6 bar up to 17 bar. Operating in parallel with forcing vaporizers, the compressors pose no risk of surging. Excess gas can be sent directly to the reliquefaction system without any risk of oil contamination.

Proven technology

Atlas Copco Gas and Process has built a wealth of expert knowledge in the LNG compressor market for marine applications over the course of four decades. Along with our 80-plus years of experience with cryogenic service, our equipment stands the test of time.

Service support

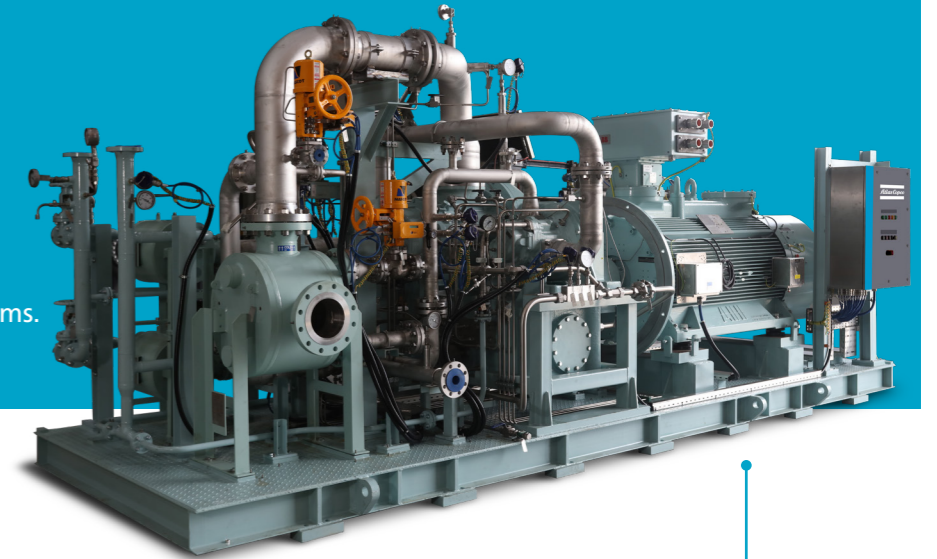
General maintenance, emergency repairs, complete overhauls - our goal is to meet our customers' expectations wherever they are, no matter the job.



Our gas screw compressors - flexible reliability for your vessel

Our gas screw compressors are the ideal solution for:

- Oil-free designs
- Powering vessel LNG fuel supply systems
- Controlling tank pressure
- Delivering gas to generators, engines or reliquefaction systems.



Boosting your onboard productivity

Our broad range of available compressor technologies allows Atlas Copco Gas and Process the flexibility to provide the solutions that fit your needs. From standardized modular designs, to fully customized packages, we can design and supply the system that best meets your specific requirements.

By designing both the air and inert gas systems in tandem, we can ensure the systems compliment each other in operation. Our service organizations are located around the globe. We are where you are and we are working to keep you moving.

BOG oil-free screw compressor - zero contamination fuel supply

- Controlling tank pressure
- Supplying gas to today's dual fuel engines and gas turbines without any worry of oil carryover
- 100% oil-free compressed gas for reliquefaction

LNG BOG compressors - The Atlas Copco difference:

- ExProof
- Low vibration
- High reliability
- No oil contamination
- Easy operation
- Small footprint
- Specifically designed for marine environments
- No bulkhead wall required between motor and compressor core unit

Our offshore LNG machinery is built to order with completely customized designs based upon the project specifications. It features state of the art screw technology for improved efficiency with carbon ring seals for trouble free operation during extended service periods.

Atlas Copco Gas and Process

Worldwide reach

Marine clients are, by their very nature, international. Our network of committed sales and service personnel ensures that Atlas Copco Gas and Process provides firstclass technical support and service worldwide.

To ensure service that matches Atlas Copco Gas and Process requirements, we only accept manufacturers with a worldwide service organization.

With tough standards

Atlas Copco Gas and Process has been granted triple certification to ISO 9001:2000, ISO 14001:2014 and OHSAS 18001 for Quality, Environmental and Occupational Health & Safety Management by Lloyd's Register Quality Assurance (LRQA). This demonstrates our commitment to the quality of our services, our care for the environmental impact of our operations and the health of our employees and customers.

Atlas Copco Gas and Process has a close working relationship with all major Class Societies and we are continuously working to develop our products for the benefit of ship owners and vessel crews, by ensuring our products are designed according to the demanding conditions and temperatures that are a daily reality in the marine business.



Atlas Copco Gas and Process

Schlehenweg 15
50999 Cologne, Germany
www.atlascopco-gap.com

